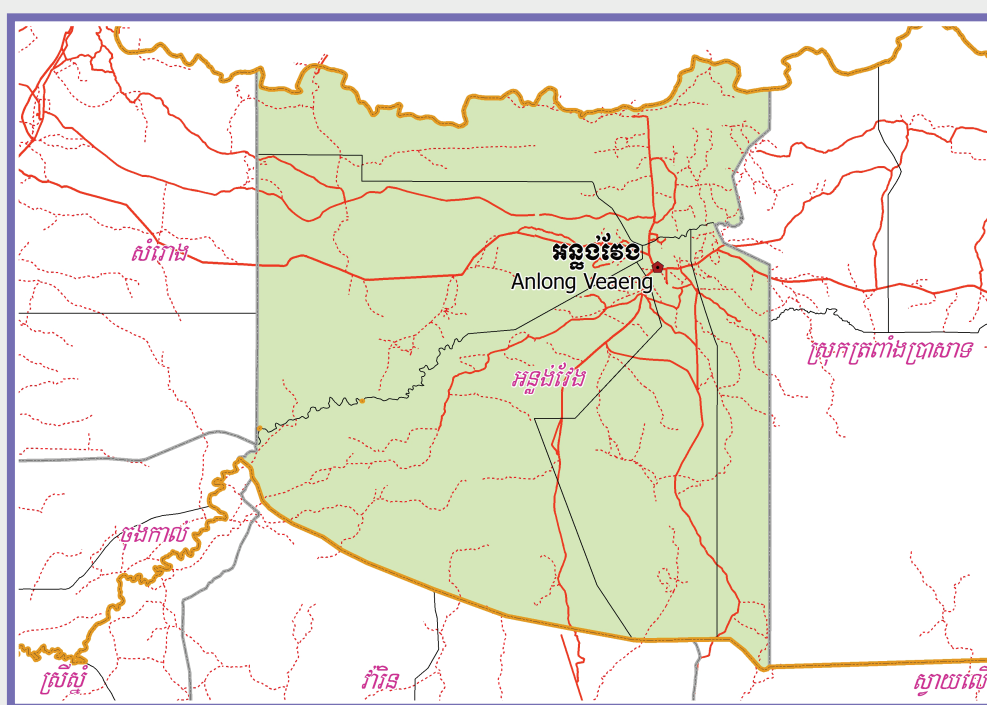


**KINGDOM OF CAMBODIA**  
**Nation Religion King**



**National Committee for Sub-National  
Democratic Development (NCDD)**



**ANLONG VEAENG DISTRICT DATA BOOK 2009**

**District Code Nr: 2201**  
**Otdar Meanchey Province**

**October 2009**



# **Anlong Veang District Data Book 2009**

District Code Nr: 2201

**Otdar Meanchey Province**



# Table of Contents

List of Abbreviations .....	i
Glossary.....	ii
Preface .....	vi
Introduction .....	vii
SECTION A: GEOGRAPHY .....	1
1 Administration and Infrastructure.....	3
2 Land Use and Natural Resources.....	5
3 Geography .....	7
3.1 Land Area .....	7
3.2 Distances between Offices .....	7
SECTION B: DISTRICT PROFILE .....	9
1 General Information .....	11
1.1 Population of the District.....	11
1.2 Occupations .....	12
1.3 Property .....	14
2 Infrastructure and Economy.....	16
2.1 Roads in meters over 3 years.....	16
2.2 Sewerage Pipes in meters over 3 years.....	16
2.3 Drainage and Bridges .....	16
2.4 Services in the District .....	16
2.5 Agriculture.....	17
3 Social Aspects .....	28
3.1 Education .....	28
3.2 Health.....	33
3.3 Water and Sanitation .....	35
3.4 Vulnerable groups.....	39
3.5 Migration .....	41
4 Natural Resources and Environment (NRE).....	43
4.1 Families involved with NRE issues over 3 years .....	43
4.2 Percentage of Families involved with Natural Resource issues, by Commune, for 2008 .....	43
4.3 Percentage Houses with access to Garbage collection and Families affected by environmental Pollution, by Commune, for 2008 .....	43
4.4 Percentage Families using chemical Fertilizer and chemical Pesticides, by Commune, for 2008 ..	43
5 Administration and Security .....	44

5.1	Birth Registration across 3 years.....	44
5.2	Number of unregistered Infants born in 2008, by Commune .....	44
5.3	Registered criminal Cases over 3 years .....	44
5.4	Registered criminal Cases per 10,000 people, by Commune, for 2008.....	44
5.5	Number of registered Land Disputes, by Commune, in 2008 .....	44
6	Gender .....	45
6.1	Registered Domestic Violence over 3 years.....	45
6.2	Percentage of registered cases of Families experiencing domestic Violence, by Commune, in 2008 .....	45
6.3	Women's involvement over 3 years.....	45
6.4	Percentage of Female Participants in Civil Society and of 18-60 year women with uncertain Jobs, by Commune, in 2008 .....	46
6.5	Female-headed Households over 3 years.....	46
6.6	Percentage female-headed Households and with Children of less than 5 years old, by Commune, in 2008 .....	46
7	Indigenous People in the District .....	47
7.1	Ethnic Minorities in the District over 3 years.....	47
7.2	Other Minorities in the District over 3 years.....	47
	SECTION C: PLANS AND PROJECTS .....	49
8	Priorities and Plans .....	51
8.1	Priorities of Commune Councils for 2009 in the District by Sector .....	51
8.2	Temporary Agreements by Commune, for 2009 .....	55
8.3	Outputs, estimated and actual costs of C/S Fund Projects between 2005 and 2008, by Commune .....	64
8.4	Total Expenditure on C/S Fund Projects by sector and commune between 2005 and 2008.....	65
8.5	Actual 2009 C/S Fund projects by Commune .....	66
9	District level Projects from 2006 to 2009 .....	67
9.1	District Initiative Infrastructure Projects from 2006 to 2009 .....	67
9.2	District Initiative Service Projects from 2006 to 2009 .....	68
9.3	Inter Commune Council Projects in 2008 and 2009 .....	68
9.4	Other Projects in 2008 and 2009 .....	68
	SECTION D: SERVICES AND ORGANIZATIONS .....	71
10	Infrastructure.....	73
10.1	Length of and Expenditure on Roads in 2008, by District .....	73
10.2	Scale of and Expenditure on Irrigation in 2008, by District.....	73
10.3	Power Supply in 2008, by District .....	73
11	Health Facilities.....	74

11.1 Health Facilities in the Province, by Operational District.....	74
11.2 Health Facilities and Staff in the province, by Operational District.....	75
11.3 Deliveries in 2007 in the Province, by Operational District.....	75
12 Education .....	76
12.1 Schools, Classes, Students, Staff, for for all levels, for 2007/2008 by District.....	76
12.2 Characteristics of Schools and School Principals for 2007/2008 by Commune .....	76
12.3 Enrolment by Level of Education, 2006/2007 by Commune .....	77
12.4 Enrolment by Level of Education, 2007/2008 by Commune .....	77
12.5 Aspects of Enrolment for 2007/2008 by Commune.....	77
12.6 School Buildings for all schools in the District for 2007/2008, by Commune .....	78
12.7 Conditions of Classrooms and Existence of Separate School Office and Library, by Commune	78
12.8 Community Participation and Financing across all schools in the District for 2007/2008 by Commune .....	78
12.9 Percentage Student Flow Rates and Graduation by level 2006/2007, by Commune .....	79
13 Staff and Resources at the District .....	80
13.1 District Councilors elected in 2009 .....	80
13.2 Committees of the Council.....	80
13.3 Board of Governors.....	81
13.4 Offices under Sala Krong, Sala Srok and Sala Khan .....	81
13.5 Municipality/District/Khan line offices.....	81
13.6 Properties and Equipment of District Administration .....	82
13.7 Registered Revenue of the District Administration in 2008 .....	83
13.8 Services in the District .....	83
13.9 Civil Society Organizations active in the District.....	83
13.10 Private Sector Organizations.....	84
SECTION E: POVERTY DATA .....	85
14 Data on Poverty .....	87
14.1 Predicted Poverty Rates for 2009, by commune .....	87
14.2 Poverty data from survey.....	87





## List of Abbreviations

#	Number
AGR	Agriculture
BR	Birth Registration
C. Pilot	Piloted Commune
C/S	Commune / Sangkat
CBO	Community-Based Organization
CDB	Commune Database
CDPD	Commune Development and Planning Database
CIP	Commune Investment plan
CLTS	Community Led-Total Sanitation
Comm.	Commune
Com Cov	Commune Covered
CPA	Complementary Package of Activities
CPS	Community Preschool
CCWC	Commune Committees for Women and Children
DANIDA	Danish International Development Agency
DDLG	Democratic Development and Local Governance Project (EC-UNDP)
DFID	Department For International Development (UK)
DIP	District Initiative Project
DIS	District Information System
District PDRD	District Office of Rural Development
District WP	District Work Plan
DIW	District Integration Workshop
DoLA	Department of Local Administration
Dr	Doctor
DWRM	District Office of Water Resource and Meterology
ECD	Early Childhood education (part of PE)
EMIS	Education Management Information System
Event IC	Celebration of International Days
FDH	Former District Hospital
GTZ	German Society for Technical Cooperation (Gesellschaft für Technische Zusammenarbeit GmbH)
Ha	Hectare
HC	Health Center
HC (NB)	Health Center (no building)
HH	Headed Household
HSI	Intervention for Health
HP	Health Post
HW	Hand Washing
ICC	Inter Commune Council
IFAD	International Fund for Agricultural Development
IND	Industry
Inter-commune	Inter-Commune Project Management Committee or Inter-commune project
IO	International Organization
LASED	Land Allocation for Socio-Economic Development
LGCR	Local Governance for Children's Rights
M&E	Monitoring and Evaluation
MA	Medical Assistant
MoEYS	Ministry of Education, Youth and Sports
MoH	Ministry of Health

MoP	Ministry of Planning
MPA	Minimum Package of Activities
MW1	Primary Midwives
MW2	Secondary Midwives
n/a	Not available
NCD	National Contracts Database
NCDD	National Committee for Sub-National Democratic Development
NGO	Non-Governmental Organization
NRML	Natural Resources Management and Livelihood
NU1	Primary Nurse
NU2	Secondary Nurse
OD	Operational District
ODF	Open Defecation Free
Ope. Costs	Operational Costs
Others	Other Staff
PBW	Public Works
PDoEYS	Provincial Department of Education, Youth and Sport
PDRD	Provincial Department of Rural Development
PDWRM	Provincial Department of Water Resource and Meteorology
PE	Parenting Education
PHAST	Participatory Hygiene and Sanitation Transformation
PHD	Provincial Health Department
PID	Project Information Database
PMC	Project Management Committee
Pop 04-05	Population Covered 2004 or 2005
PSDD	Project to Support Democratic Development through Decentralization and Deconcentration
RRD	Rural Road Development
RH	Referral Hospital
RILGP	Rural Investment and Local Governance Project
RPRP	Rural Poverty Reduction Program
RuLIP	Rural Livelihoods Improvement Program
SIDA	Swedish International Development Cooperation Agency
SPPA	Senior Provincial Program Advisor
TBA	Traditional Birth Attendant
UNDP	United Nations Development Project
UNICEF	United Nations Children's Fund
Vil	Village
Vil Cov	Village Covered
VIL-HC	Distance from Village to Health Center
WASH	Water, Sanitation and Hygiene
WRM	Water Resource and Meteorology

## Glossary

**C/S Fund:** The Commune/Sangkat Fund is established and managed by the Government of Cambodia to provide financial support for development projects and administrative costs of Commune/Sangkat Councils. The amount is determined as a percentage of the National Budget (for 2009: 2.8% over the 2008 budget) and is expected to increase gradually over the years. The total 2009 budget under this fund is \$ 27,643,902 (of which \$ 19,272,170 is for Development Projects and \$ 8,371,731 for Administration). Under the Rural Investment and Local Governance Project the World Bank currently reimburses the costs of development projects if these meet the Bank's criteria.

**CDB:** the Commune Data Base is a national database, compiled by the Ministry of Planning, on the basis of detailed questionnaires, completed at village and commune level, which are then sent to the Departments of Planning for data entry. The most recent round of data collection took place at the end of 2008 (and is reflected in the District Data Books). Commune, District and Provincial Profiles can be generated from this database and should be available from provincial Departments of Planning.

**CDPD:** the Commune Development and Planning Database is a database maintained by Departments of Planning and Ministry of Planning, recording proposed activities as determined and prioritized by Commune and Sangkat Councils; the Temporary Agreements between these councils and supporting agencies, as decided at District Integration Workshops and details on projects that actually take place at commune, district and provincial levels.

**CIP:** The Commune Investment Plan is a rolling three-year plan, developed and decided by the Commune or Sangkat Council. It sets priorities and identifies the projects proposed for the years to come.

**Commune and Sangkat (C/S):** the Communes (in rural areas) and Sangkats (in urban areas) are the lowest and smallest units of local government. Councils are elected directly, once in five years, for the 1417 Communes and 204 Sangkats. In the C/S there are 14,119 villages, which have Village Chiefs, but don't constitute a formal level of local government.

**DIP:** the District Initiative Project is jointly supported by the MDLF (Multi-Donor Livelihood Facility (supporting the NRM&L Program)) and PSDD. In 2009 it covers 106 districts, 60% of the total in the country, with a budget of \$ 3.2 million. It is focused on capacity development in planning, democratic development, public competitive procurement, financial management and service delivery.

**DIS:** The District Information System is a national database maintained by NCDD, recording resources, staff, revenue, infrastructure and equipment available in the 193 Districts and Khans throughout the country. The last update took place in July 2009.

**District, Municipality and Khan** constitutes the third level of Government in Cambodia. There are 159 rural Districts, 26 Municipalities and 8 Khans of Phnom Penh Capital. They all have Councils which were, for the first time, elected in May 2009, by the Commune/Sangkat Councilors. These councils have a mandate for 5 years.

**DIW:** District Integration Workshops are held between July and October, to bring Commune/Sangkat Councils, looking for support for their projects, together with the governmental and non-governmental agencies that may provide support.

**ICC:** Inter Communes Council projects are executed in 10 provinces under the Democratic and Decentralized Local Governance Project (DDLG). This five year project (2006-2010) is executed by Ministry of Interior and funded by the European Commission and UNDP. The project focuses on improving dialogue partnership and accountability; create a network of Commune Councils at the provincial and national level and support and contribute to local area development for poverty reduction. The work under the ICC component supports investments and services formulated through inter-commune dialogue and planning.

**MEDiCAM:** A non-profit and non-partisan membership organization for NGOs active in Cambodia's health sector. It is the primary networking agency for health-related NGOs.

**NCDD:** the National Committee for sub-National Democratic Development is the inter-ministerial body charged with the implementation of the Organic Law (a key legislative document, adopted in 2008, outlining the envisaged decentralization). NCDD also channels substantial financial assistance by a number of Development Partners, to projects and programs at various levels. This amounted to over \$ 91 million in 2008. More information at: [www.ncdd.gov.kh](http://www.ncdd.gov.kh). This website also provides access to reports, manuals, legal documents, details on projects and more.

**OD:** the Operational Districts are the districts as defined and used by the Ministry of Health. These do not coincide with the 193 (Administrative) Districts and Khans, as used by all other RGC agencies. The Operational Districts are usually larger, and so there are 77 Operational Districts against 193 administrative Districts and Khans. However they do fit within the boundaries of administrative provinces.

**PID:** The Project Information Database is the database maintained by NCDD at national and sub national level, to follow all aspects of projects by Commune and Sangkat Councils, including the C/S Fund projects

### **Provincial Investment Fund (PIF)**

The Provincial Investment Fund is allocated to all Provinces and Municipalities according to a population based formula. Part of the fund is earmarked for support to planning activities of the Provincial / Municipal Department of Planning; and to gender mainstreaming activities of the Provincial Department of Women's Affairs. The remaining "un-earmarked PIF" is allocated by PRDC to sectoral technical departments against established criteria and in response to proposals with prioritisation taking into account: priorities formulated by the CS Councils and aggregated by District into District Priority Activities Matrices (DPAM); alignment with national planning and poverty alleviation criteria, complementarity with other planned activities; and performance of the Department concerned in implementation of activities in previous years. With this provisional allocation, the Department then programs activities through the District Integration Process. Finally, the agreed activities, plus support costs amounting to no more than 25% of the total, are included in a sub-contract signed between PRDC and the Department, pursuant to the overall PSDD contract signed between NCDD and PRDC. Total budget has been around \$ 2 million per year.

**Province:** the 23 Provinces and Phnom Penh Capital City represent the 2<sup>nd</sup> layer of government. They vary in size, from very small, like Kep (approx. 36,000 people) and Pailin (approx. 70,000 people), or large but with small populations, like Mondulkiri (over 60,000 people), and Ratanakiri (over 153,000) to densely populated and large, like Kampong Cham (over 1.7 million people) and Kandal (approx. 1.4 Million people).

**PSDD:** the Project to Support Democratic Development through Decentralization and Deconcentration is funded by DFID (UK), SIDA (Sweden) and UNDP and runs from 2006 till the end of 2010 (including a one year extension). Annual budgets range from \$ 11 million to over \$ 18 million. The project provides core technical support to NCDD and to the provinces, financial support to the C/S Fund, District Initiative, Provincial Investment Fund and capacity building support through training, studies and advisory services.

**RILGP:** The Rural Investment and Local Governance Project is a World Bank funded project that provides substantial support to C/S Fund projects and to developing the required infrastructure, policies, systems and skills. It started in 2003 with a Loan for \$ 22 million for 2003-2007 and was then extended with a Grant of \$ 36 million for the period of 2007-2010. Discussions about a possible RILGP 2 are taking place between RGC and the World Bank.

**RPRP:** the Rural Poverty Reduction Project is a seven year project from 2004 till 2010, funded by IFAD and UNDP and implemented through the Ministry of Agriculture, Forestry and Fishery, supported by the Ministry of Interior and facilitated by NCDD. The project is active in the provinces Prey Veng and Svay Rieng and focuses on 120,600 households below poverty line. The objective is poverty reduction with the active participation of the poor through improved livelihoods, Strengthened capacity, Sustainable farming systems and natural resource management, new and/or rehabilitated infrastructure development, increase accessibly to technology, services and markets for their economic and social development.

**RULIP:** the Rural Livelihoods Improvement Project is implemented by the Ministry of Agriculture Forestry and Fisheries (MAFF)' Project Support Unit- PSU, with the NCDD playing the role of cooperating agency. Funded by IFAD and UNDP, the project will run till 2014. The target group consists of poor households who have little or even no land, few livestock or other assets and often many dependents. The main goal of the project is to directly or indirectly improve the livelihood systems, food security and incomes of a total of 33,900 rural poor, ethnic minority and female headed households in targeted village of Kratie, Preah Vihear and Ratanakiri provinces in a sustainable manner.

**Seth Koma:** The UNICEF funded Seth Koma program focuses on measurable action for children and women. During 2006 -2010 it is implemented in six provinces. Government and UNICEF pursue a set of inter-related goals, addressing critical stages of the life cycle of the child: a) Mothers have safe pregnancies and deliveries and healthy newborns; b) best possible start in life of infant; c) Children enter schools at the right age of six years; d) Children are protected from exploitation, abuse, violence, discrimination and other risks; and e) Youth and adolescents acquire life skills, express their views, participate in the decisions.

## **Preface**

The Government of Cambodia attaches great importance to optimal use of scarce resources and to participatory planning and management at all levels. The Organic Law which was adopted in 2008 provides the legal context for further steps towards improving and decentralizing planning, management and monitoring, and towards greater accountability and transparency of institutions at sub-national levels.

The Government has established elected Councils at the sub-national levels, and we will progressively give them the responsibilities, together with the human and financial resources, to deliver a wide range of public services. They will be more democratic, more efficient, more transparent and accountable, better at addressing gender and other inequalities, and at fighting corruption. We recognize that development does not come from government alone; it needs the involvement of citizens, civil society and the private sector, and the new system will facilitate this.

A central element in this process is the availability of information on any aspect of development to all concerned parties. The newly elected Councillors at District and Khan level, line departments operating at these levels, but also NGOs, Development Partners, Commune Councillors and citizens throughout Cambodia need information on problems and requirements, resources and opportunities, services and agencies, plans and projects. They will need such information to better understand the present situation, set targets for the future, monitor progress, know what others are doing and to apply resources wisely and this is the reason the District Data books will be so valuable.

The District Data Books are a major step towards full transparency and towards informed planning and decision-making. They provide all available data at District, Khan, Commune and Sangkat level in easily accessible formats, in Khmer and English, through over 16,000 printed copies, CD-ROMs and the NCDD website.

This is the first time in Cambodia (and possibly in South East Asia) that such detailed information is made so widely available and NCDD should be commended for the hard work that has gone into this. We also thank the Ministry of Planning, which provided the detailed data of the Commune Data Base, the sectoral ministries and provincial authorities who contributed data and the Development Partners who provided financial support.

It is our sincere hope that the publication of the District Data Books will strengthen capacities, especially at district levels, for evidence-based development planning. We also hope that this information will deepen the understanding among Ministries, Provincial Authorities, Development Partners, NGOs and research agencies of the realities at commune and district levels.

We call upon all to use and distribute this information, complement or correct where appropriate and to contribute new data in the years to come.

**Sar KHENG**

Deputy Prime Minister, Minister of Interior and Chairman of NCDD

# Introduction

## Purpose

The purpose of the District Data Books is to bring together information on any aspect of life and development of Districts, Khans, Communes and Sangkat, together and make this widely available. The primary targets are the newly elected District Councilors, district level line departments, provincial agencies, Development Partners and NGOs operating at this level. They need detailed knowledge on current living conditions, natural resources, infrastructure, agriculture and other economic activities, current service levels, past and planned projects and available resources.

While much information exists on many of the above aspects, it is often hard to access that information and much is lost to reports, databases and statistics that are not widely shared. Data are often only available in one language and often out-of-date, and many reports cover only one sector or region.

We found that these problems are especially acute at the district level. Now that Districts are becoming a much more significant level of local government and development planning, there is an urgent need for wide-ranging data to be used for setting base-lines, planning and prioritizing, monitoring and learning.

## Approach

We have attempted to identify and compile all available statistics, reports, maps and other data at district and/or commune level. From this we have selected information that is available for all or most districts, reasonably reliable and up-to-date, sufficiently detailed and of possible interest to development planners, decision makers, agencies and citizens.

The major sources of the information in these District Data Books are:

- a) The Commune Data Base information over the years 2006 to 2009 (the most recent data were collected late last 2008), as compiled by the Ministry of Planning
- b) Detailed information directly collected from the Ministry of Health, the Ministry of Education, Youth and Sports and (for maps) the Ministry of Land Management, Urban Planning and Construction
- c) The Project Information Database (PID) at NCDD (up-to-date)
- d) The Commune Development and Planning Database (CDPD) (up to date)
- e) The District Information System (DIS) (updated per Mid 2009)
- f) Direct data collection at provincial and district level on private sector, irrigation, roads, and electricity, through provincial agencies
- g) Medical data collected from MEDiCAM
- h) The ID Poor Project – for poverty data on a number of provinces and districts
- i) NCDD's work on predictive poverty rates
- j) Specific projects for outputs, plans and budgets (Seth Koma, RILGP, RPRP and ICC)

## Limitations of the data

We are fully aware that the data we collected are not always complete, consistent or correct. While we have rejected information that was wrong or very incomplete, we decided not to aim for statistical and scientific perfection, but to include information that is useful, relevant

and comprehensive. We also accepted different sources for the same data as this may encourage discussion on the quality of the respective data.

We strongly encourage anyone who notes errors or incompleteness in these data to contact us and to share their data. We hope that the next round of producing such District Data Books can draw on wider sources and more complete data.

We encourage the District Administrations, who receive these data also in digital format, not only to use these for their planning and monitoring, but also to start correcting and updating these data and to share new data with NCDD for future use.

## Contents

The information in the following pages is organized in five sections:

- a) **Geographical data:** this section provides maps on infrastructure and administration and on land use and natural resources management. These maps are also provided in large format to all Districts and Khans.
- b) **District Profile:** this presents wide ranging data, covering 2006 – 2009, at district and commune level, extracted from the Commune Data Base, but edited for better understanding.
- c) **Plans and Projects:** this section presents development priorities determined by Commune and Sangkat Councils, Temporary Agreements, outputs and expenditure of major projects at Commune and District level over 2006 – 2008 and plans and budgets for 2009.
- d) **Services and Organizations:** this section provides details on key infrastructure (roads, electricity, irrigation systems) and services in health and education at district and commune level. It also provides an inventory of resources at the District Administration, NGOs operating in the district and private sector agencies active in the district.
- e) **Poverty Data:** this section provides predicted poverty rates for 2009 for all districts and communes and detailed poverty data compiled and processed by the ID Poor project for those that have been covered by this project.

## The future

It is our hope that this is the start of a longer-term process. We hope that a next edition of these District Data Books will offer more comprehensive, correct and up-to-date information. We hope that the District Administrations will not only start using this information, but also improve and update it. For this they are all provided with the full data set in digital format.

We invite agencies, projects and experts to send reports, statistics and maps that could be used for a next version to us and we invite all users of the District Data Books to inform us about errors, updates and inconsistencies. Please contact us through [info@ncdd.gov.kh](mailto:info@ncdd.gov.kh)

We now invite you to browse through this data book. You may open this randomly or use the table of contents and go to the aspects that have your special interest.

We hope that you will be informed, surprised and assisted. We hope, above all, that this information will lead to a deeper understanding of causes and effects of poverty, to purposeful decisions on how to tackle those causes and to greater transparency in using scarce resources for the benefit of all.

Martin de Graaf  
Program Advisor, PSDD/NCD



## **SECTION A: GEOGRAPHY**



# **1 Administration and Infrastructure**

Please see separate folder containing A3 maps.



## **2 Land Use and Natural Resources**

Please see separate folder containing A3 maps



### 3 Geography

#### 3.1 Land Area

Total Land Area (ha)	Forest Land Area (ha)		Cultivation Land Area (ha)	Construction Land Area (ha)	Other Land Area (ha)
	Total	Flooded Forest Area			
153319	94672	0	40200	12671	5776

#### 3.2 Distances between Offices

Location	Distance (Km)
From District Office to C/S Office of Anlong Veang	0
From District Office to C/S Office of Lumtong	4
From District Office to C/S Office of Trapeang Tav	7
From District Office to C/S Office of Trapeang Prei	20
From District Office to C/S Office of Thlat	3





## **SECTION B: DISTRICT PROFILE<sup>1</sup>**

---

<sup>1</sup> All data in this section come from the Commune Database (CDB) unless otherwise specified. These include primarily new CDB data, collected late 2008, and some data from earlier years. Please note that percentages are rounded to the nearest whole number.



# 1 General Information

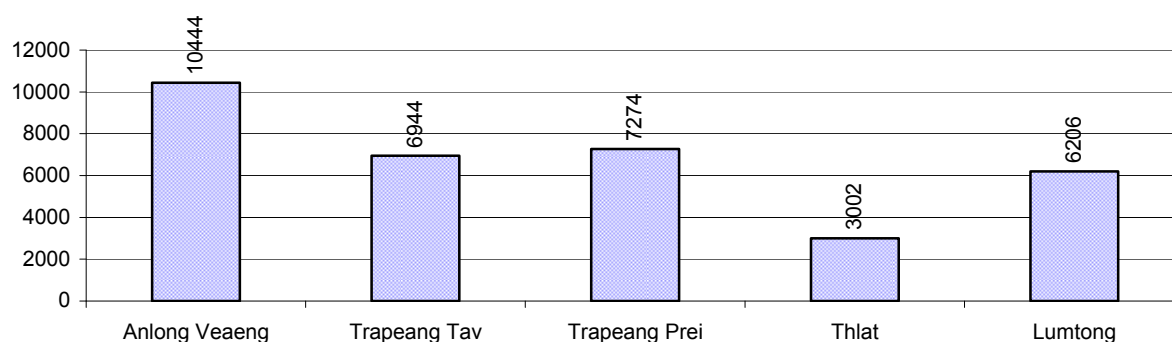
## 1.1 Population of the District

### 1.1.1 Total Population

Number of families	2005	2006	2007	2008
Total number of families	5,663 families	6,568 families	7,149 families	7,603 families
Increase (+)/Decrease (-) in nr of families		16%	9%	6%
Total population	27,218 pers	30,100 pers	32,792 pers	33,870 pers
Increase (+)/Decrease (-) in nr of people		11%	9%	3%
Number of female Headed Households (HH)	1,673 families	1,789 families	1,416 families	1,346 families

**Note:** Percentages of population and increase/decrease are calculated on basis of the previous year. A negative sign in front of the percentage indicates a decrease in population.

### 1.1.2 Population, by Commune, in 2008



### 1.1.3 Population, by Age Group, over 3 years

Population by age group	2006	2007	2008	
	%	%	%	Number
<b>Age 0-5 years (as percentage of the population)</b>	15%	17%	16%	5,463 persons
Male 0-5 yrs	51%	59%	51%	2,781 persons
Female 0-5 yrs	49%	41%	49%	2,682 persons
<b>Age 6-17 (as percentage of the population)</b>	35%	33%	31%	10,478 persons
Male 6-17 yrs	51%	51%	51%	5,365 persons
Female 6-17 yrs	49%	49%	49%	5,113 persons
<b>Age 18-60 (as percentage of the population)</b>	48%	48%	50%	17,029 persons
Male 18-60 yrs	50%	49%	50%	8,513 persons
Female 18-60 yrs	50%	51%	50%	8,516 persons
<b>Age 61 above (as percentage of the population)</b>	2%	2%	3%	900 persons
Male 61	50%	52%	51%	455 persons
Female 61	50%	48%	49%	445 persons

**Note:** The overall percentage for each age group is calculated on the basis of the total population. The gender distribution of each group is calculated on the basis of the population within that particular age group.

## 1.2 Occupations

### 1.2.1 Percentage of families with a particular Occupation over 3 years

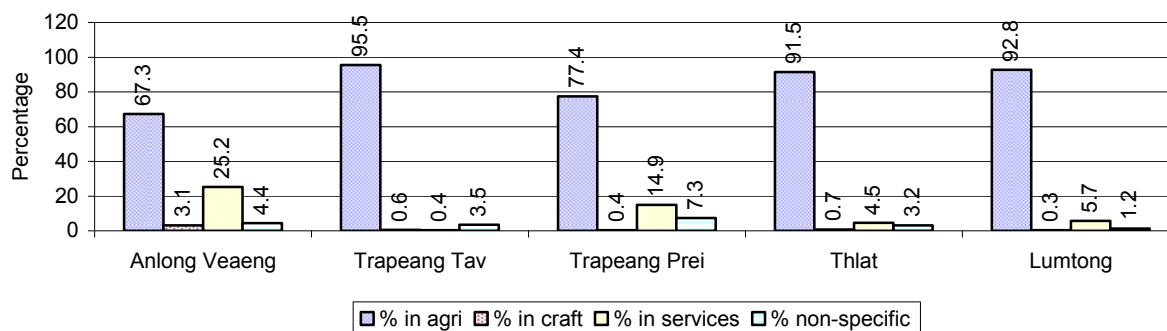
*This table shows the percentage of the population who have a particular occupation (job), for example the percentage of the population in the district who are rice farmers, furniture crafter, trader, etc.*

Description	2006	2007	2008	
	%	%	%	Number
<b>Families whose main occupation is agriculture</b>	84%	81%	82%	6,255 Families
Families whose primary occupation is rice farming	80%	75%	79%	5,991 Families
Families whose primary occupation is cultivating long-term crops	1%	1%	0%	34 Families
Families whose primary occupation is cultivating short-term crops	1%	2%	1%	95 Families
Families whose primary occupation is cultivating vegetable	0%	1%	1%	67 Families
Families whose primary occupation is fisherman	1%	0%	0%	13 Families
Families whose primary occupation is livestock farmer	0%	2%	0%	17 Families
Families whose primary occupation is NTFP collection	1%	1%	0%	38 Families
<b>Families whose main occupation is craft work</b>	1%	1%	1%	96 Families
Families, whose main occupation is in furniture craft, wooden, rattan, vine, bamboo	0%	0%	0%	37 Families
Families whose main occupation is in metal, aluminum, glass goods production	0%	0%	0%	8 Families
Families whose main occupation is food production	1%	0%	0%	3 Families
Families whose main occupation is tire, plastics and rubber goods production	0%	0%	0%	0 Families
Families whose main occupation is textile, clothing goods production	0%	0%	0%	1 Families
Families whose main occupation is in other production, not listed above	0%	0%	1%	47 Families
<b>Families whose main occupation is services</b>	5%	12%	12%	935 Families
Families whose main occupation is trade	3%	5%	5%	416 Families
Families whose main occupation is repair	0%	1%	1%	48 Families
Families whose main occupation is providing transport services	0%	0%	0%	21 Families
Families whose main occupation is providing other services	1%	6%	6%	450 Families
Families whose main occupation is not clear (or multi)	11%	6%	4%	317 Families

**Note:** The occupation percentages are calculated on the basis of the total number of families.

### 1.2.2 Percentage Families that work in one of four occupational sectors, by Commune in 2008

This table indicates the percentage of families involved in one of four occupation types: agriculture, craft, services or non-specific (other). Please note agriculture includes forestry activities such as cutting down trees and gathering gum from the trees.



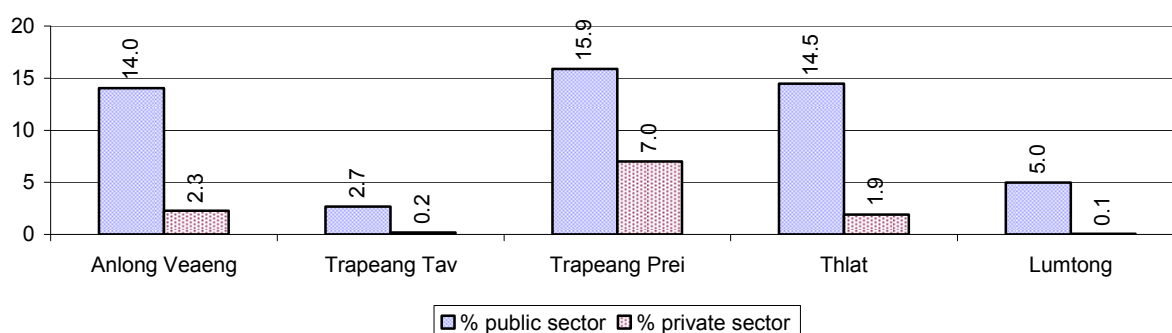
**Note:** Calculated on the basis of the total number of families within a commune.

### 1.2.3 Percentage of Families with public Sector, private Sector or uncertain Jobs, over 3 years

Description	2006	2007	2008	
	%	%	%	Number
Families that have a family member who is a government official, staff or worker	10%	8%	10%	794 families
Families that have a family member who is a private sector staff or worker	0%	0%	2%	186 families
Number of people aged 18-60 with uncertain/irregular jobs	3%	6%	6%	974 persons

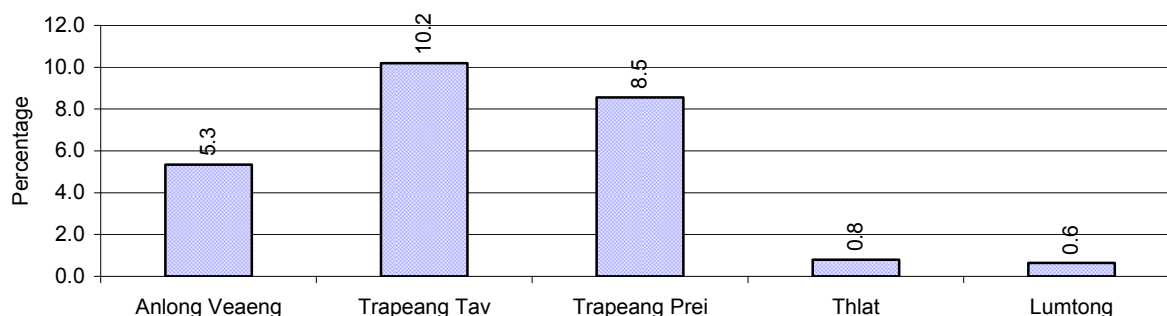
**Note:** In the first two rows percentages are calculated on the basis of the total number of families. In the third row the percentage is calculated on the basis of the total number of people aged 18-60 years.

### 1.2.4 Percentage of Families with public or private Sector Jobs, by Commune in 2008



**Note:** Calculated on the basis of the total number of families in the commune

### 1.2.5 Percentage of People aged 18-60 years with uncertain/irregular Jobs, by Commune, in 2008.



## 1.3 Property

### 1.3.1 Housing types and facilities over 3 years

This table shows the percentage of people living in a certain type of house. It also indicates how many houses have electricity or battery powered lights and how many have TV.

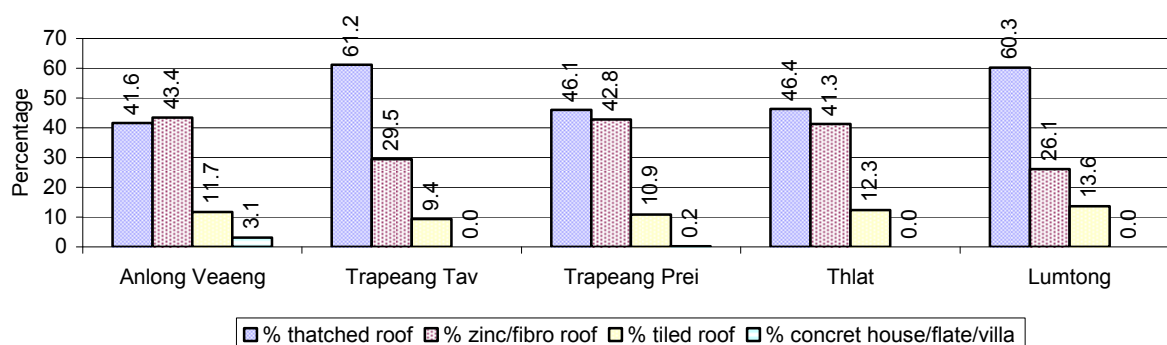
House Type	2006 %	2007 %	2008	
			%	Number
House with thatched roof	72 %	58 %	51 %	3,469 houses
House with zinc/fibro roof	23 %	33 %	37 %	2,542 houses
House with tiled roof	5 %	8 %	11 %	787 houses
Flats/apartments (with many families living)	0 %	0 %	0 %	16 houses
Concrete house or flat (with one family living)	0 %	1 %	1 %	54 houses
Villa house	0 %	0 %	0 %	0 houses
Houses with electricity	7 %	16 %	16 %	1,069 houses
Houses with battery light	43 %	50 %	59 %	4,084 houses
Houses with TV	39 %	45 %	51 %	3,525 houses

**Note:** Calculated against the total number of houses

### 1.3.2 Families living on public Land or without a permanent House

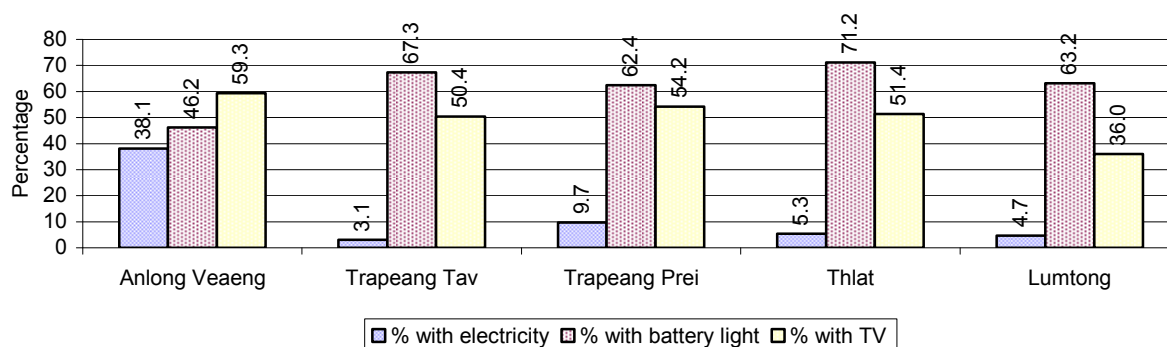
Living situation	2006	2007	2008
Families living in a house on public land	46 families	91 families	56 families
People, without permanent housing	46 person(s)	57 person(s)	22 person(s)

### 1.3.3 Percentage of Population living in a particular type of House, by Commune, in 2008



**Note:** Calculated against the total number of houses in each commune

### 1.3.4 Percentage of Houses with Electricity, Battery Lights and/or TVs, by Commune, in 2008



**Note:** Calculated against the total number of houses in each commune

### 1.3.5 Types of Vehicles and their ratio to Families across 3 years

This table shows the number of families per vehicle in the district. The last column shows the total number of each type of vehicle in the district for 2008.

Description	2006 ratio	2007 ratio	2008	
			Ratio	Number
Bicycle and bicycle with trailer	2	2	2	3,495
Ox-carts and horse-carts	31	38	42	182
Motorbike/with trailer	3	2	2	3,643
Motor tri-cycle	438	2,383	N/A	0
Large Transportation				
<b>Total number of cars/trucks</b>	23	29	22	347
Locally made vehicles	212	170	181	42
Trucks for goods transport	137	140	141	54
Buses/mini buses for passengers	821	1,430	585	13
Family cars	33	48	32	238
Agriculture machinery				
Tractors used for plowing	386	286	146	52
Power-tillage used for plowing	7	5	4	1,947
Other type of machinery				
Other type of machinery	547	79	1,267	6
Water transportation				
Row boats	31	40	35	219
<b>Total number of motor boats</b>	2,189	7,149	74	103
Motor boats used for fishing	6,568	N/A	75	102
Motor boats used for passengers	6,568	7,149	N/A	0
Motor boats used for goods transporting	6,568	N/A	7,603	1

**Note:** Ratio of families to a particular type of vehicle is the result of the total number of families divided by total number of that type of vehicle. Other types of vehicles, such as bulldozer, excavator, rollers etc. are not listed.

## 2 Infrastructure and Economy

### 2.1 Roads in meters over 3 years

Description	2006	2007	2008
Bituminous road	0 m	0 m	800 m
DBST, Macadam road	4,200 m	4,200 m	4,200 m
Concrete road	0 m	0 m	0 m
Laterite road	15,692 m	10,950 m	13,530 m
Constructed earth road	31,624 m	31,181 m	72,650 m
Un-constructed earth road	31,105 m	35,250 m	17,300 m

### 2.2 Sewerage Pipes in meters over 3 years

Description	Sewage pipe length		
	2006	2007	2008
Total length of sewage pipe, diameter 30-50 cm	0 m	0 m	14 m
Length of newly constructed sewage pipe, diameter 30-50 cm	0 m	0 m	0 m
Length of sewage pipe, diameter 30-50 cm needs repair/rehabilitation	0 m	0 m	0 m
Total length of sewage pipe, diameter of pipe 60-100 cm	70 m	163 m	86 m
Length of newly constructed sewage pipe, diameter 60-100 cm	50 m	10 m	12 m
Length of sewage pipe, diameter 60-100 cm needs repair/rehabilitation	0 m	0 m	0 m
Sewage pipe, diameter of pipe over 100 cm	0 m	0 m	0 m
Length of newly constructed sewage pipe, diameter over 100 cm	0 m	0 m	0 m
Length of sewage pipe, diameter over 100 cm needs repair/rehabilitation	0 m	0 m	0 m

### 2.3 Drainage and Bridges

Construction Type	2006		2007		2008	
	place(s)	Length	place(s)	Length	place(s)	Length
Single pipe culvert	29	118m	31	130 m	26	122 m
Double-pipe culvert	8	42m	6	30 m	5	23 m
Box pipe culvert	0	0m	0	0m	0	0 m
Wooden bridge	47	354m	24	283m	13	200 m
Concrete bridge	1	15m	1	15m	2	21 m
Bale bridge	0	0m	0	0m	0	0 m
Spillway construction	2	30m	1	25m	1	25 m

### 2.4 Services in the District

Descriptions	Number of places by year		
	2006	2007	2008
<b>Public</b>			
Electricity generating stations	3	9	1
Health clinics	0	0	5
<b>Private</b>			
Bicycle and motorcycle repair places	29	41	28
Agricultural machinery, tools and equipment repair places	10	18	17
Electronic tool repair places	3	4	7
Battery-charging services	28	30	29
Handicraft places, wooden furniture and forest by-products	25	31	22
Other handicraft places (excluding furniture)	15	5	10
Small-scale services (hairstylist, phone service, massage,	39	40	30



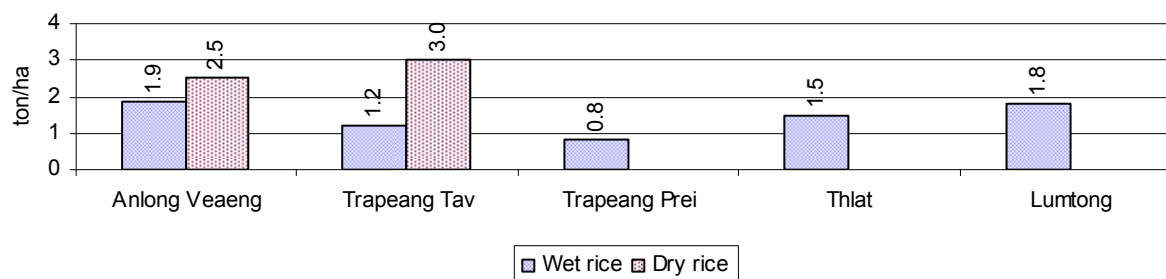
Descriptions	Number of places by year		
	2006	2007	2008
Karaoke, etc)			
Small-scale food shop businesses (Food, groceries, drink shop, etc)	33	29	29
Small-scale rice mills	44	49	117
Medium or large-scale rice mills	16	15	17
Small-scale markets	5	5	3
Large-scale market	0	1	1
Alcohol refinery places	10	49	39
Pharmacies and small drug stores	11	13	12
Hotels	0	0	0
Guest houses	10	9	10
Restaurants	5	10	4
Gasoline stations	4	11	8

## 2.5 Agriculture

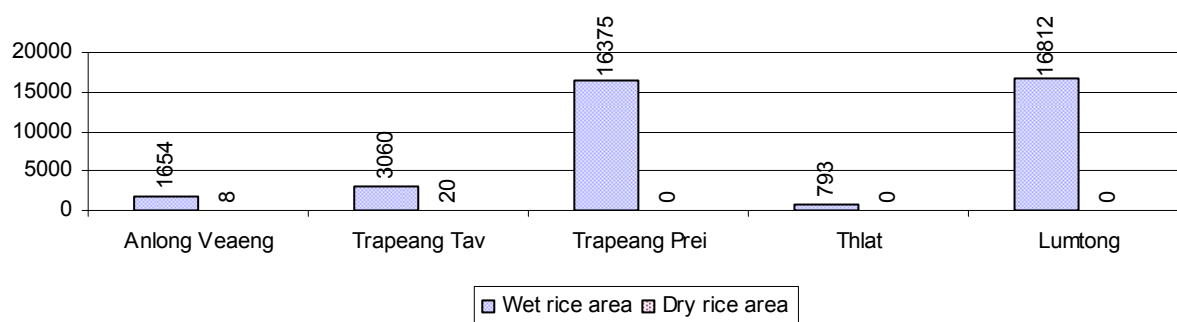
### 2.5.1 Rice cultivation in the District over 3 years

Description	2006	2007	2008
Total dry rice land area	40 ha	100 ha	140 ha
Actual dry rice cultivation area	17 ha	35 ha	28 ha
% actual cultivation to total land	43%	35%	20%
Total dry rice production	34 tonne(s)	70 tonne(s)	77 tonne(s)
Average dry rice yield	2.0 tonne(s)/ha	2.0 tonne(s)/ha	2.8 tonne(s)/ha
Total wet rice land area	8,043 ha	14,368 ha	14,214 ha
Actual wet rice cultivation area	6,614 ha	8,308 ha	38,694 ha
% actual cultivation to total land	82 %	58%	272%
Total wet rice production	11,243.80 tonne(s)	11,443.44 tonne(s)	55,610.30 tonne(s)
Average wet rice yield	1.7 tonne(s)/ha	1.4 tonne(s)/ha	1.4 tonne(s)/ha
Total intensive rice land area	0 ha	0 ha	3,060 ha
Actual intensive rice cultivation area	- ha	- ha	- ha
Average intensive rice yield	- tonne(s)/ha	- tonne(s)/ha	- tonne(s)/ha
Actual upland rice cultivation area	1,148 ha	1,584 ha	1,771 ha
Total upland rice production	1,913 tonne(s)	1,679 tonne(s)	2,337 tonne(s)
Average upland rice yield	1.7 tonne(s)/ha	1.1 tonne(s)/ha	1.3 tonne(s)/ha

### 2.5.2 Estimated wet and dry Season Rice Yield in tonne(s)/Ha, by Commune, in 2008



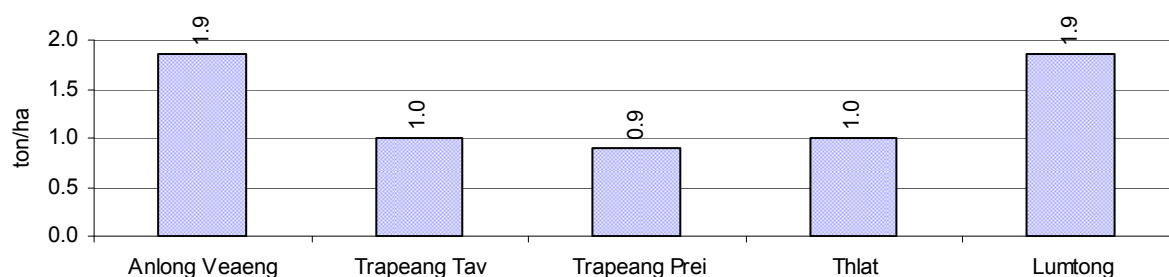
### 2.5.3 Cultivated wet and dry Season Rice areas in Ha, by Commune, in 2008



### 2.5.4 Estimated intensive Rice Yields in tonnes/Ha, by Commune, for 2008

There were no estimated intensive rice yields in this District in 2008

### 2.5.5 Estimated upland Rice Yield in tonnes/Ha, by Commune, for 2008

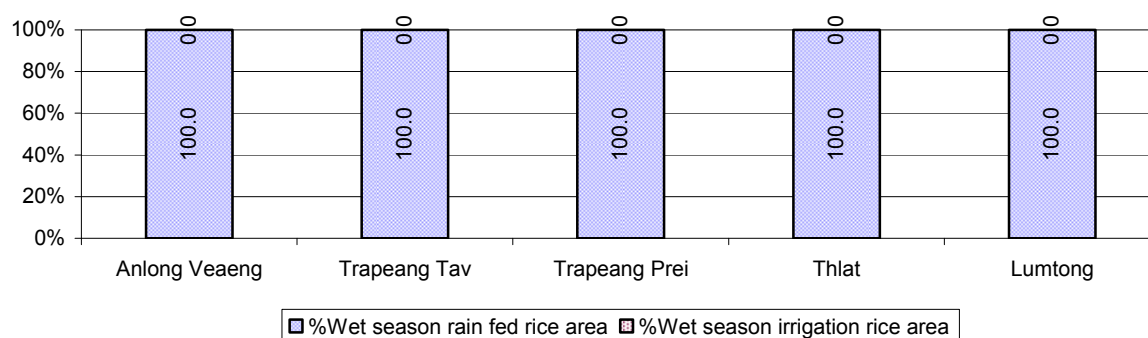


### 2.5.6 Wet season Rice irrigation across 3 years

Description		2006	2007	2008	
		%	%	%	Number
Total area of wet season rain fed rice land		100%	100%	100 %	38,694 ha
Percentage of wet season rice land that is irrigated; and for 2008 area in Ha		0 %	0 %	0 %	0 ha
Where	Area irrigated from canal/dam	- %	- %	- %	0 ha
	Area irrigated from river, stream, lake, natural pond	- %	- %	- %	0 ha
	Area irrigated from drilled well	- %	- %	- %	0 ha
	Area irrigated from dug pond	- %	- %	- %	0 ha

### 2.5.7 Water sources for wet Season Rice Cultivation, by Commune, in 2008

This chart shows the percentage of wet season rice cultivation receiving water from rain (natural) and from irrigation.



### 2.5.8 Access to Irrigation

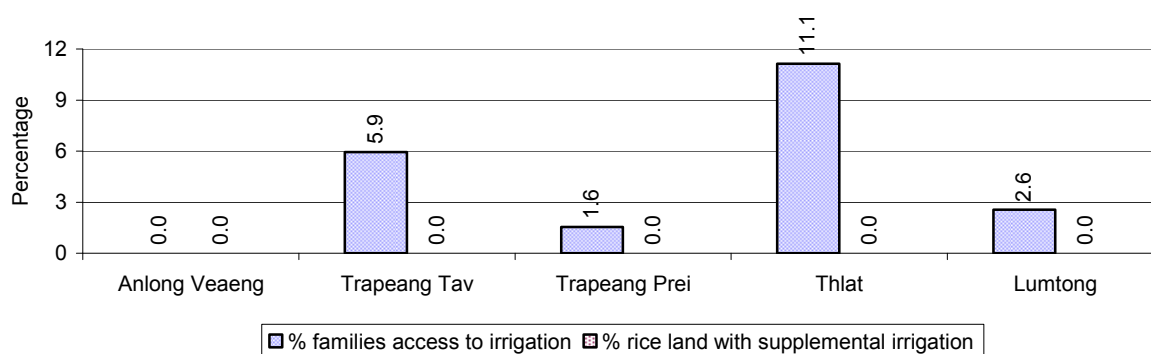
Description	2006 %	2007 %	2008	
			%	Number
Families who have access to irrigation water	1%	2%	3%	207 families
Families who have irrigation wells	1%	1%	0%	13 families

**Note:** Calculated against the total number of families are rice farmers

### 2.5.9 Number of Irrigation Wells over 3 years

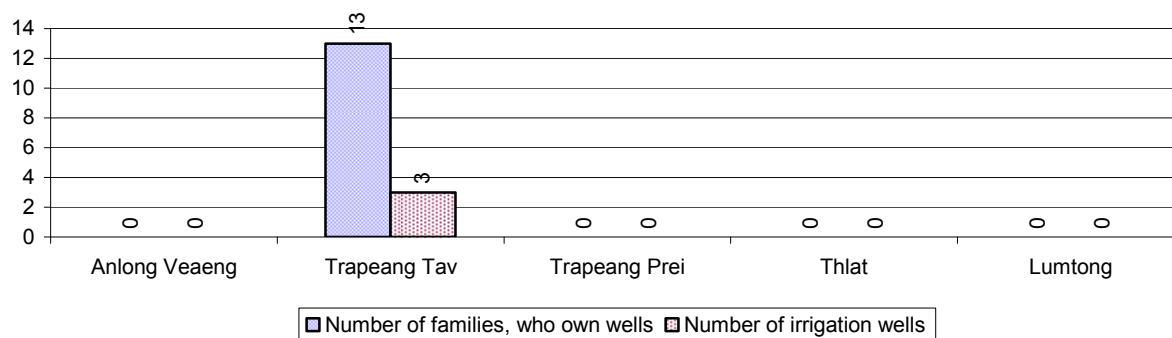
Description	2006	2007	2008
Number of irrigation wells	15 wells	20 wells	3 wells

### 2.5.10 Percentage of Families with access to (supplemental) Irrigation for wet Season Rice cultivation, by Commune, in 2008



**Note:** % of families, with access to irrigation is calculated against the total number of families, whose main occupation is rice farming. Irrigated wet rice land area is calculated against the total actual wet rice land cultivated areas

### 2.5.11 Irrigation Wells, by Commune, in 2008

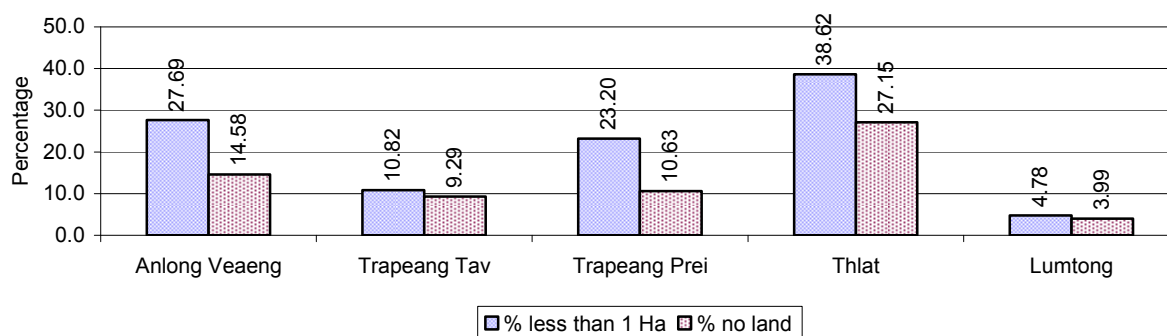


### 2.5.12 Farmers owning less than one hectare of Rice Land

Description	2006	2007	2008	
	%	%	%	Number
Families who have less than one hectare of rice land	21%	17%	19%	1,126 families
Families who do not own any rice land	8%	9%	11%	685 families

**Note:** Calculated on basis of total number of families who are rice farming

### 2.5.13 Percentage of Farmers with less than one Hectare or no Rice Land, by Commune, in 2008

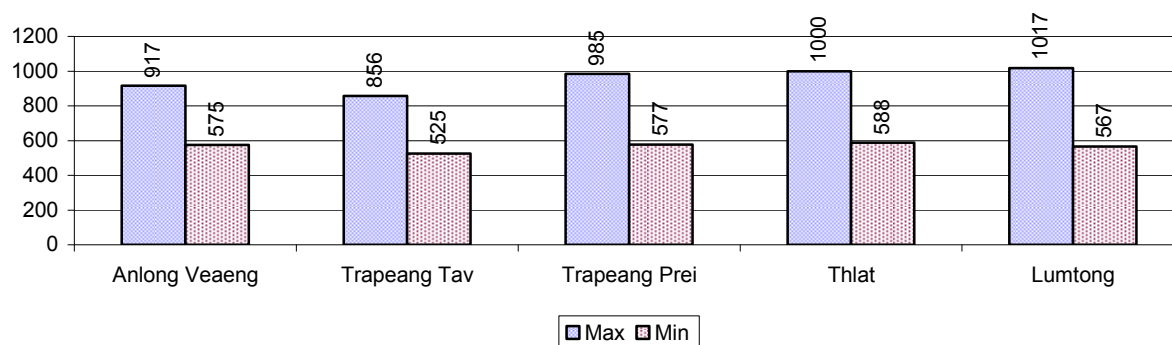


**Note:** Calculated on basis of total number of families who are rice farming

### 2.5.14 Average farm-gate Prices of Rice, over 3 years

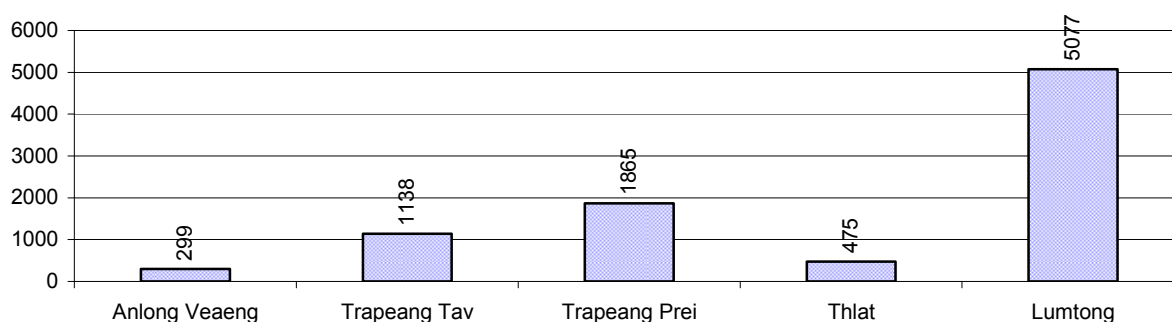
Description	2006	2007	2008
Maximum average farm gate price	562 Riels/Kg	926 Riels/Kg	955 Riels/Kg
Minimum average farm gate price	367 Riels/Kg	631 Riels/Kg	566 Riels/Kg
Average farm gate price	464 Riels/Kg	778 Riels/Kg	761 Riels/Kg
Average rice production per person	438 Kg/person	402 Kg/person	1,822 Kg/person

### 2.5.15 Minimum and maximum farm-gate Prices of Rice in Riel/kg, by Commune, in 2008



### 2.5.16 Production of Paddy in Kgs/Person, by Commune, in 2008

*This table shows how much paddy (harvested rice) is produced in a year in a commune, in kgs per person.*

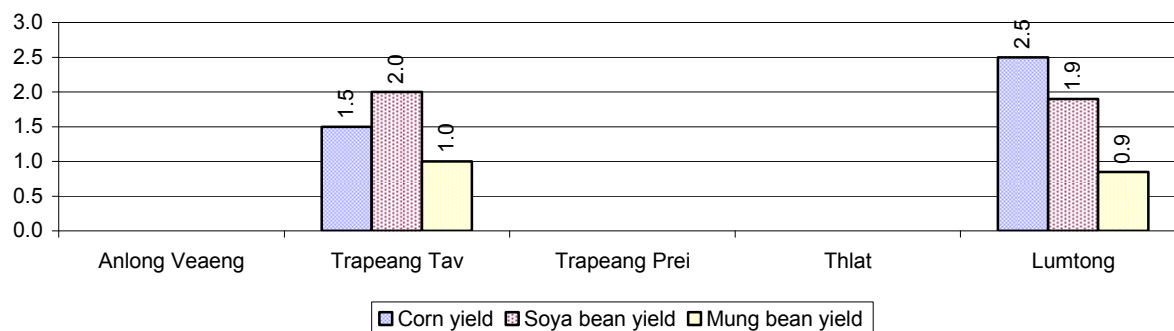


### 2.5.17 Production of other Crops, over 3 years

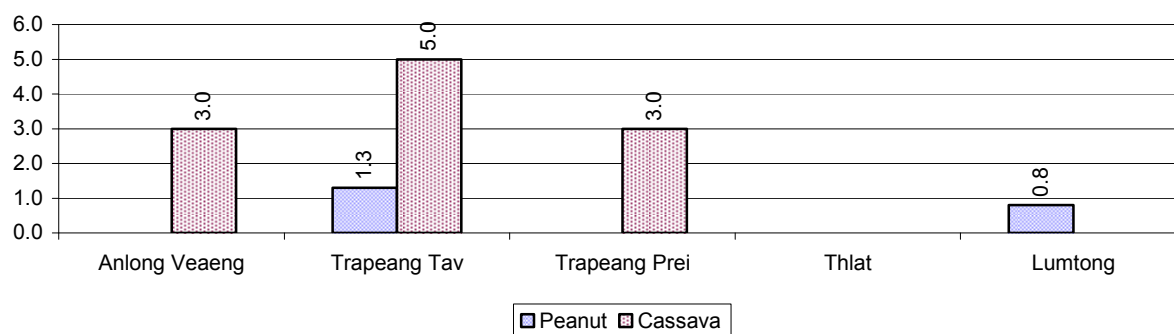
Crops	2006	2007	2008
Corn cultivation area	15 ha	32 ha	31 ha
Estimated corn yield	1.2 tonne(s)/ha	3.3 tonne(s)/ha	2.0 tonne(s)/ha
Estimated corn production	18 tonne(s)	104 tonne(s)	62 tonne(s)
Soya bean cultivation area	31 ha	41 ha	53 ha
Estimated Soya bean yield	2.0 tonne(s)/ha	1.5 tonne(s)/ha	2.0 tonne(s)/ha
Estimated Soya bean production	60 tonne(s)	60 tonne(s)	103 tonne(s)
Mungbean cultivation area	29 ha	24 ha	36 ha
Estimated Mungbean yield	2.2 tonne(s)/ha	0.9 tonne(s)/ha	0.9 tonne(s)/ha
Estimated Mungbean production	63 tonne(s)	21 tonne(s)	33 tonne(s)
Peanut cultivation area	46 ha	26 ha	20 ha
Estimated Peanut yield	1.1 tonne(s)/ha	0.9 tonne(s)/ha	1.1 tonne(s)/ha
Estimated Peanut production	48 tonne(s)	24 tonne(s)	21 tonne(s)
Cassava cultivation area	20 ha	30 ha	42 ha
Estimated Cassava yield	12.5 tonne(s)/ha	13.3 tonne(s)/ha	3.7 tonne(s)/ha
Estimated Cassava production	250 tonne(s)	400 tonne(s)	152 tonne(s)
Sweet potatoes cultivation area	6 ha	6 ha	6 ha
Estimated Sweet potatoes yield	6.8 tonne(s)/ha	0.8 tonne(s)/ha	2.3 tonne(s)/ha

Crops	2006	2007	2008
Estimated Sweet potatoes production	41 tonne(s)	5 tonne(s)	14 tonne(s)
Sesame cultivation area	14 ha	5 ha	5 ha
Estimated Sesame yield	1.0 tonne(s)/ha	0.9 tonne(s)/ha	0.7 tonne(s)/ha
Estimated Sesame production	14 tonne(s)	5 tonne(s)	3 tonne(s)

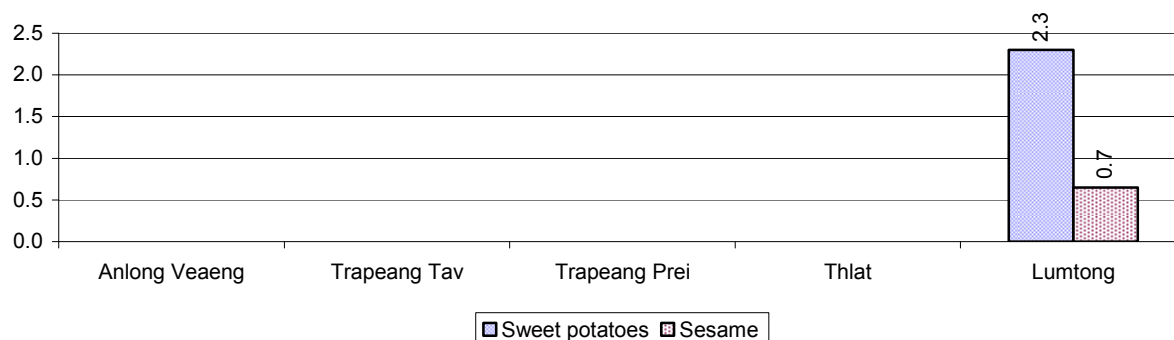
### 2.5.18 Yields of Corn, Soya beans and Mungbeans in tonne(s)/ha, by Commune, in 2008



### 2.5.19 Yields of Peanuts and Cassava in tonne(s)/ha by Commune, in 2008



### 2.5.20 Yields of Sweet Potatoes and Sesame in tonne(s)/ha, by Commune, in 2008



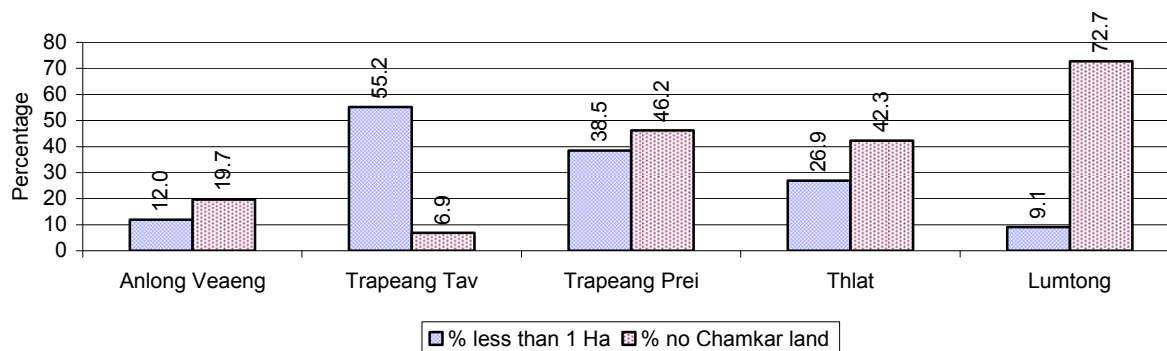
### 2.5.21 Percentage Farmers who own less than 1 Ha or no Chamkar land

Description	2006 %	2007 %	2008	
			%	Number
Families, who own less than 1ha of Chamkar land	23%	20%	22%	43 families
Families, with no Chamkar land	29%	17%	26%	50 families

**Note 1:** Calculated as a percentage of the total number of families whose main occupation is Chamkar (not rice) farming

**Note 2:** Chamkar land is no-rice land, i.e. other crops

### 2.5.22 Percentage Farmers owning less than 1 ha or no Chamkar land, by Commune, in 2008



**Note:** Percentage is calculated among families, who Chamkar farm as a main occupation, not the total population of the commune.

### 2.5.23 Percentage of Families raising Cattle/Buffalo, over 3 years

Description	2006 %	2007 %	2008	
			%	Number
Families raising cattle/buffalo	32%	31%	28%	2,130 families
Families raising cattle/buffalo as labor forces	5%	4%	2%	173 families

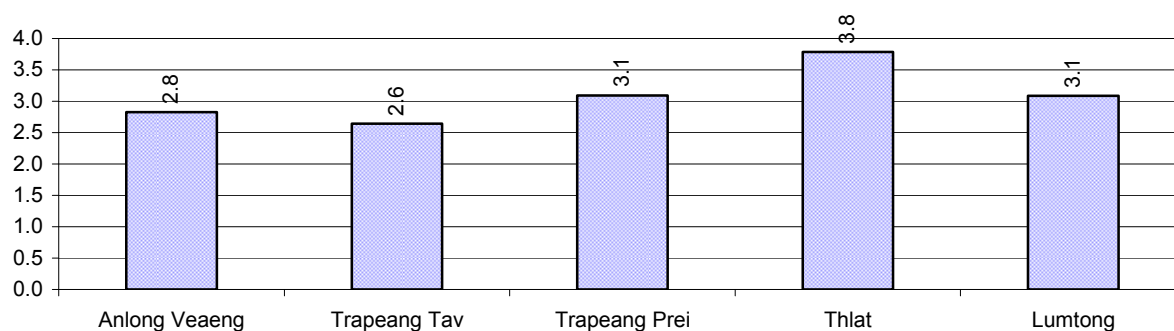
**Note:** Calculated against the total number of families.

### 2.5.24 Number of Cattle/buffalo being raised, over 3 years

Description	2006	2007	2008
Total number of cattle/buffalo	5,365 head(s)	5,874 head(s)	6,448 head(s)
Average cattle/buffalo per families	2.6 head(s)/families	2.6 head(s)/families	3 head(s)/families

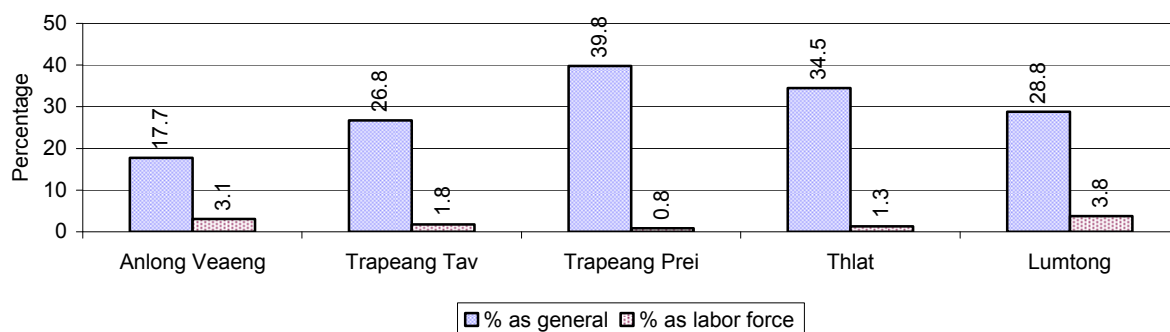
**Note:** Calculated by dividing total number of cattle/buffalo by total number of cattle/buffalo raising families

### 2.5.25 Average number of Cattle/Buffalo per Family, by Commune, in 2008



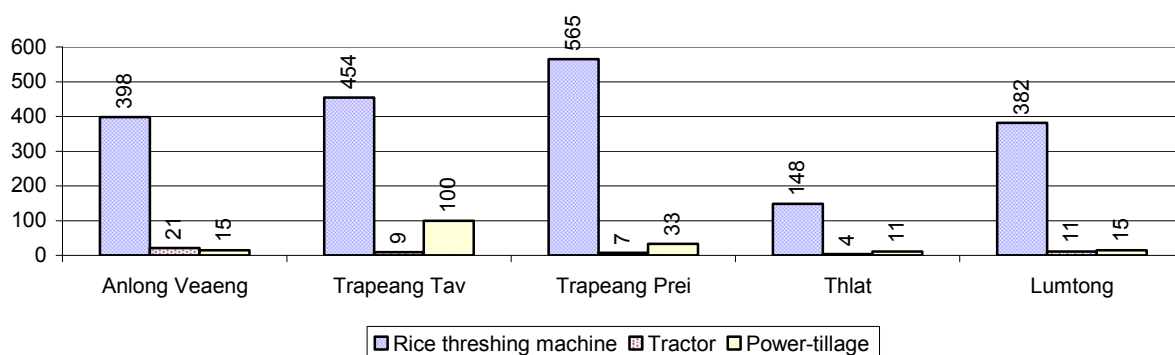
**Note:** Calculated by dividing total number of cattle/buffalo by total number of cattle/buffalo raising families

### 2.5.26 Percentage Families raising Cattle/Buffalo, for general and labor purposes in 2008, by Commune



**Note:** Calculated using the total number of families raising cattle/buffalo against the total number of families.

### 2.5.27 Type and number of agricultural Machines, by Commune, in 2008



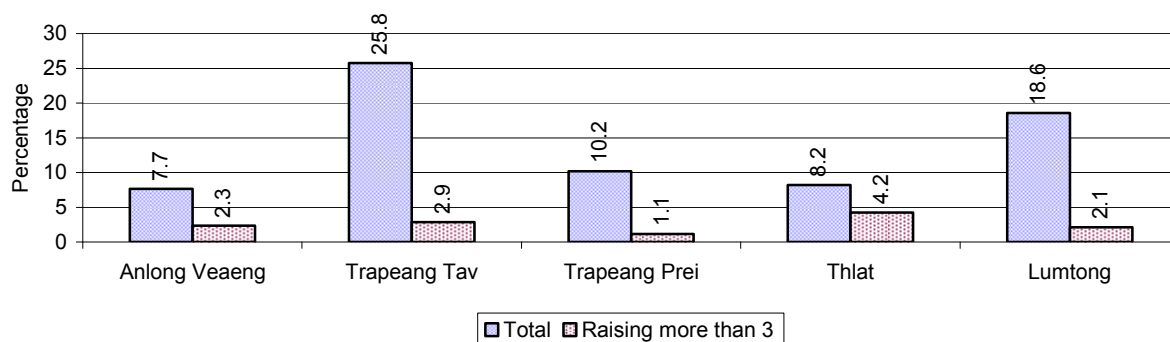
### 2.5.28 Livestock-producing Households over 3 years

Description	2006 %	2007 %	2008	
			%	Number
Total number of families raising pigs	21%	19%	14%	1,069 families
number of families raising more than 3 pigs	2%	2%	2%	176 families
Total number of families raising chickens	76%	69%	67%	5,058 families
number of families raising more than 3 chickens	53%	52%	43%	3,275 families
Total number of families raising ducks	6%	8%	6%	484 families
number of families raising more than 5 ducks	3%	6%	4%	287 families
Total number of families raising goats or sheep	0%	0%	0%	10 families
Total number of families raising horses	0%	0%	0%	2 families

**Note:** Calculated against the total number of families

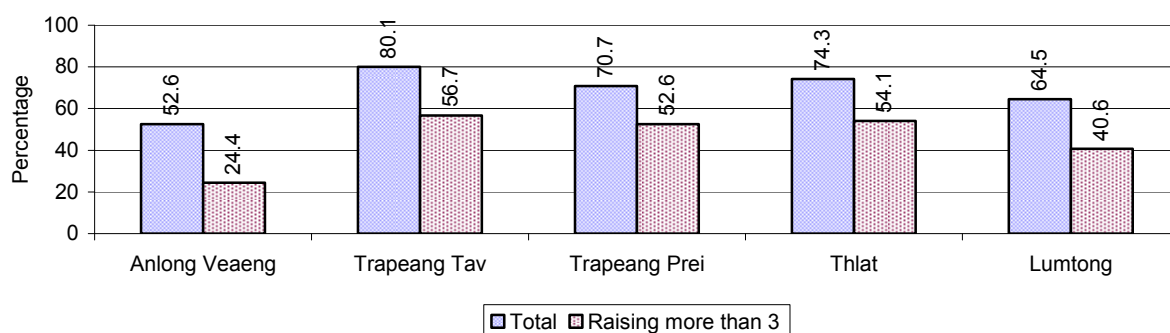


### 2.5.29 Percentage Families raising Pigs, by Commune, in 2008



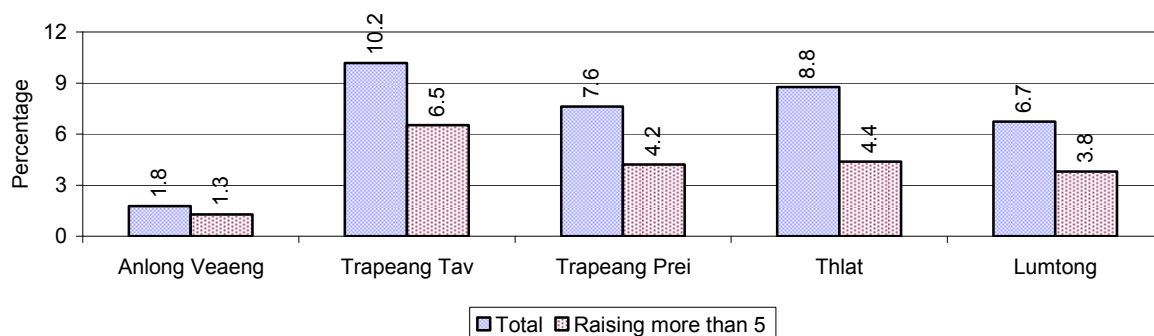
**Note:** Calculated against the total number of families in the commune

### 2.5.30 Percentage Families raising Chickens, by Commune, in 2008



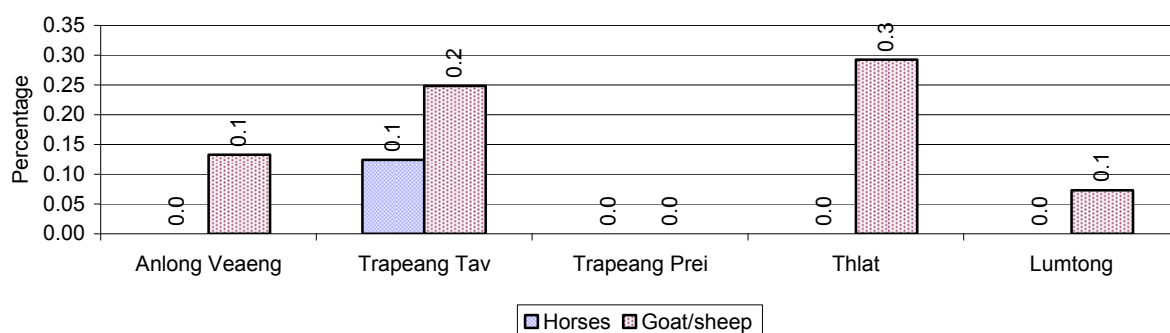
**Note:** Calculated against the total number of families in the commune

### 2.5.31 Percentage Families raising Ducks, by Commune, in 2008



**Note:** Calculated against the total number of families in the commune

### 2.5.32 Percentage Families raising Horses, Goats or Sheep, by Commune, in 2008

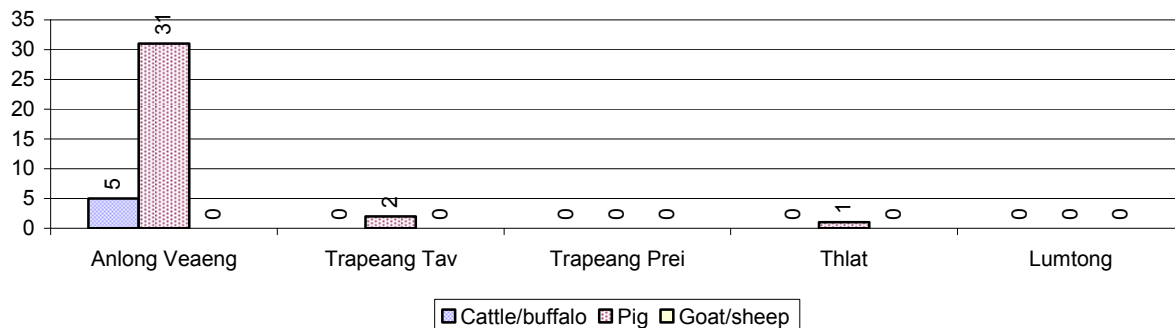


**Note:** Calculated against the total number of families in the commune

### 2.5.33 Livestock Farms over 3 years

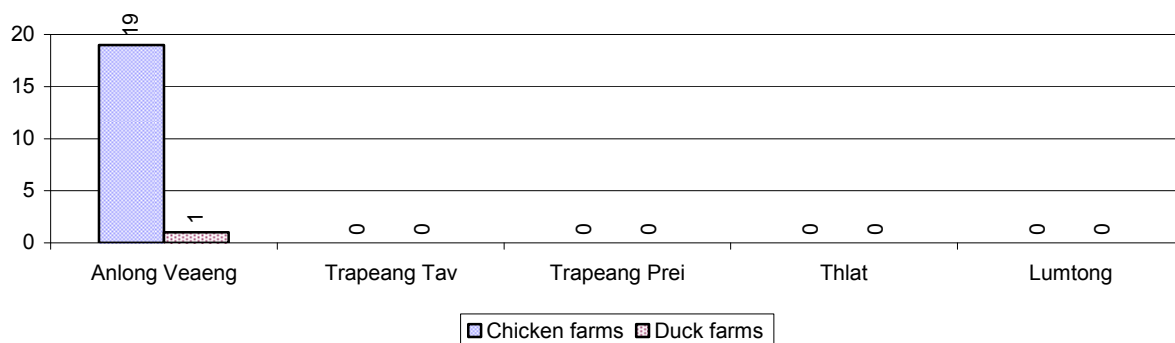
Description	2006	2007	2008
Number of cattle/buffalo farms	21 farm(s)	21 farm(s)	5 farm(s)
Number of pig farms	0 farm(s)	16 farm(s)	34 farm(s)
Number of goat/sheep farms	0 farm(s)	1 farm(s)	0 farm(s)
Number of chicken farms	2 farm(s)	3 farm(s)	19 farm(s)
Number of duck farms	0 farm(s)	6 farm(s)	1 farm(s)

### 2.5.34 Number Livestock Farms, by Commune in 2008



**Note:** Number of farms are recorded by the village chief, not by counting number of livestock in each farm

### 2.5.35 Number Chicken and Duck Farms, by Commune, for 2008



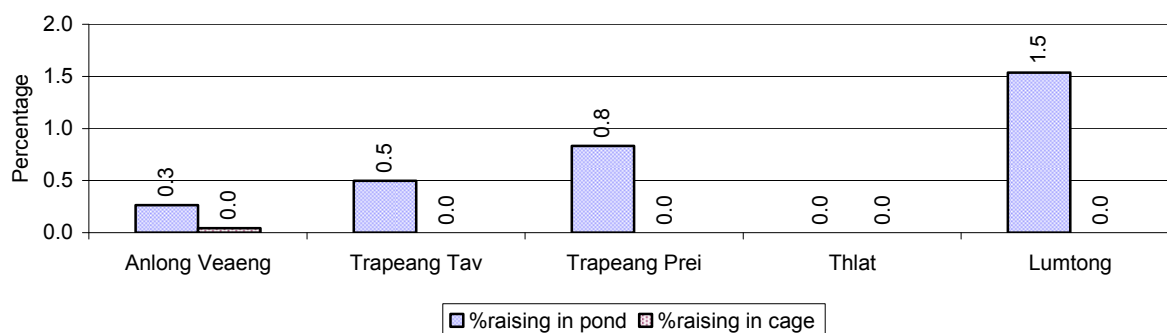
**Note:** Number of farm places recorded by village chief, not by counting number of livestock in each farm

### 2.5.36 Families raising Fish over 3 years

Description	2006	2007	2008
Total number of families raising fish	59 families	33 families	50 families
% families raising fish	1%	0%	1%
Number families raising fish in pond	57 families	33 families	49 families
% families raising fish in pond	1%	0 %	1%
Number fish pond	58 pond(s)	34 pond(s)	53 pond(s)
No. of ponds per family	1.0 pond/families	1.0 pond/families	1.1 pond/families
Number of families raising fish in cage	2 families	0 families	1 families
%families raising fish in cage	0 %	0 %	0%
Number of fish cage	2 cage(s)	0 cage(s)	1 cage(s)
No. of fish cage per family	1.0 cage /families	- cage /families	1.0 cage /families

**Note:** % of families raising fish or fish in ponds or cages is calculated a percentage of the total number of families.

### 2.5.37 Percentage of Families raising Fish, by Commune, in 2008



**Note:** Calculated as a percentage of the total number of families in the commune.

### 2.5.38 Shrimp and Prawn Farming over 3 years

Description	2006	2007	2008
Number of families raising shrimps	0 families	0 families	0 families
% Families raising shrimps	0%	0%	0%
Number of shrimp ponds	0 pond	0 pond	0 pond
Total area raising shrimps	0 ha	0 ha	0 ha
Area per family	-ha/families	-ha/families	-ha/families
Number of families raising prawns	0 families	0 families	0 families
% families raising prawns	0%	0%	0%
Number prawn ponds	0 pond	0 pond	0 pond
Ponds per families	- pond/families	-pond/families	-pond/families
Number of prawn cages	0 cage	0 cage	0 cage
Cages per families	0 cage /families	0 cage /families	0 cage /families

**Note:** Percentage of families raising either prawns or shrimp is calculated against the number of families, who do aquaculture farming, NOT the total population.

### 2.5.39 Numbers of Families raising Shrimps and number of Shrimp Ponds, by Commune, in 2008

There were none of these in this District in 2008

### 2.5.40 Number of Families raising Prawn and Number of Prawn Ponds/Cages, by Commune, in 2008

There were none of these in this District in 2008

### 3 Social Aspects

#### 3.1 Education

##### 3.1.1 Kindergarten in the District over 3 years

Description	2006	2007	2008
Number of community kindergarten schools	38 school(s)	25 school(s)	26 school(s)
Number of community kindergarten class rooms	26 room(s)	28 room(s)	23 room(s)
Number of community kindergarten classes	18 class(es)	31 class(es)	21 class(es)
Number of community kindergarten teachers	41 person(s)	42 person(s)	27 person(s)
Number of women community kindergarten teachers	41 women	42 women	27 women
Number of state and private kindergarten schools	1 school(s)	0 school(s)	2 school(s)
Number of state and private kindergarten class rooms	1 room(s)	0 room(s)	2 room(s)
Number of state and private kindergarten classes	1 class(es)	0 class(es)	2 class(es)
Number of state and private kindergarten teachers	1 person(s)	0 person(s)	2 person(s)
Number of women state and private kindergarten teachers	1 women	0 women	2 women

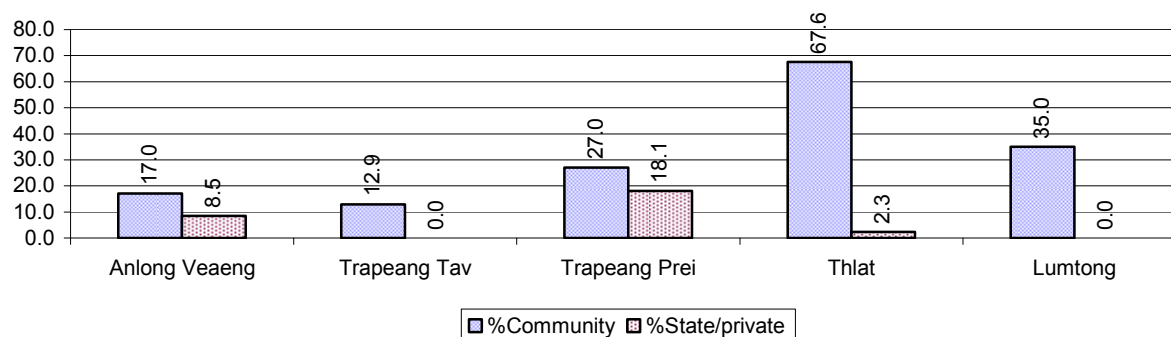
##### 3.1.2 Percentage enrolment at Kindergarten level over 3 years

*This table shows the percentage of the total 3-5 year old population attending kindergarten.*

Description	2006 %	2007 %	2008	
			%	Number
Total percentage of children, 3-5 yrs, go to kindergarten	36%	37%	32%	929 person(s)
Percentage of children, 3-5 yrs, go community kindergarten	31%	34%	25%	746 person(s)
Percentage children, 3-5 yrs, go state/private kindergarten	5%	3%	6%	183 person(s)

**Note:** Calculated against the total for that age group

##### 3.1.3 Percentage of Children 3-5 yrs attending Kindergarten, by Commune, in 2008



### 3.1.4 Basic Education over 3 years

#### Primary School

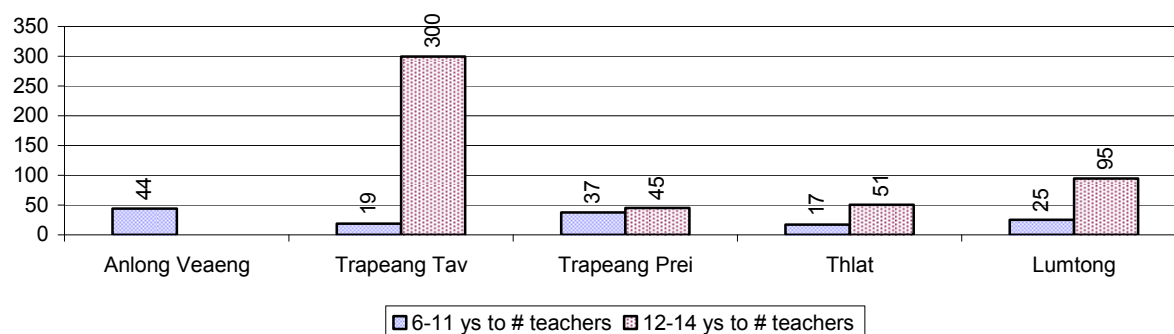
Description	2006	2007	2008
Number of primary schools	26 school(s)	31 school(s)	28 school(s)
Number of primary school rooms	124 room(s)	145 room(s)	153 room(s)
Number of primary classes	156 class(es)	201 class(es)	224 class(es)
Number of primary teachers	166 person(s)	171 person(s)	180 person(s)
Ratio of children 6-11 yrs to school	197	163	176
Ratio of children 6-11 yrs to school room	41	35	32
Ratio of children 6-11 yrs to class	33	25	22
Ratio of children 6-11 yrs to teacher	31	30	27

**Note:** According to education norm, children 6-11 yrs should attend primary school, while 12-14 yrs should be in lower secondary school, but in reality this varies.

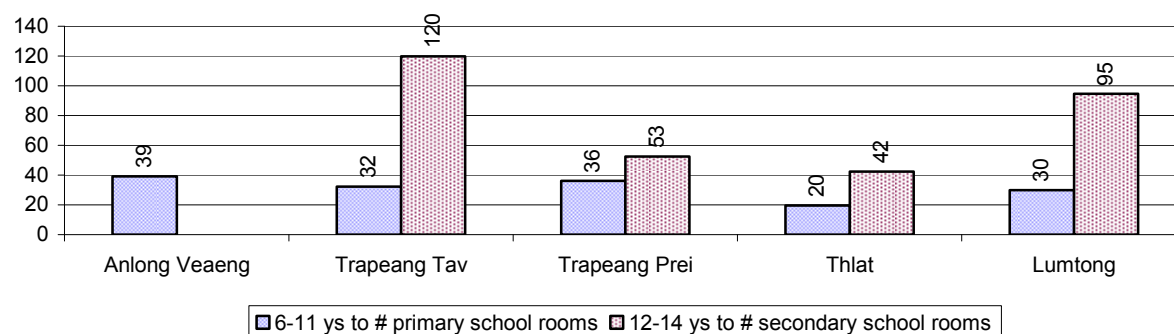
#### Lower Secondary School

Description	2006	2007	2008
Number of lower secondary schools	7 school(s)	4 school(s)	5 school(s)
Number of lower secondary school rooms	39 room(s)	27 room(s)	28 room(s)
Number of lower secondary classes	29 class(es)	18 class(es)	17 class(es)
Number of lower secondary teachers	40 person(s)	17 person(s)	26 person(s)
Ratio children 12-14 yrs to school	419	737	569
Ratio of children 12-14 yrs to school room	75	109	102
Ratio of children 12-14 yrs to class	101	164	167
Ratio of children 12-14 yrs to teacher	73	173	110

### 3.1.5 Ratio of 6-11 year old and 12-14 year old Children to number of Teachers, by Commune, in 2008



### 3.1.6 Ratio of 6-11 year old and 12-14 year old Children to number of School Rooms, by Commune, in 2008



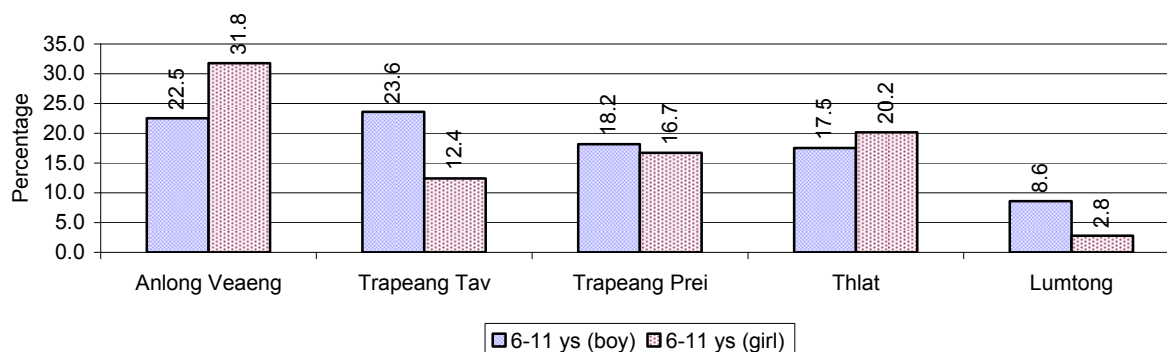
### 3.1.7 Enrolment status at Primary Level over 3 years

Description	2006 %	2007 %	2008	
			%	Number
Total children aged 6-11 years old	17%	15%	15%	4,921 person(s)
Total children aged 6-11 who are in school	77%	80%	82%	4,023 person(s)
Total children aged 6-11 who are not in school	23%	20%	18%	898 person(s)
Total girls aged 6-11 years old	16%	16%	14%	2,375 person(s)
Total girls aged 6-11 who are in school	77%	79%	82%	1,950 person(s)
Total girls aged 6-11 who are not in school	23%	21%	18%	425 person(s)
Total boys aged 6-11 years old	18%	15%	15%	2,546 person(s)
Total boys aged 6-11 who are in school	77%	80%	81%	2,073 person(s)
Total boys aged 6-11 who are not in school	23%	20%	19%	473 person(s)

**Note 1:** Percentage is calculated on the basis of the total number of children within 6-11 year age group for the first 3 rows and for the total girls and the total boys aged 6-11 yrs.

**Note 2:** Number of girls aged 6-11 who are in & not in school is calculated against the total number of girls aged 6-11 yrs. Number boys, 6-11 yrs who are in & not in school are calculated against the total number of boys aged 6-11 yrs.

### 3.1.8 Percentage of 6-11 year old Children not in School, by Commune, in 2008



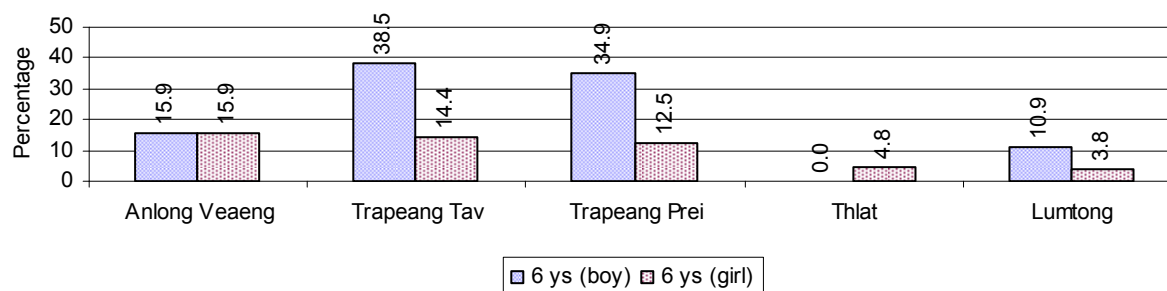
**Note:** calculated on the basis of the total number of children within 6-11 year age group in the commune.

### 3.1.9 Enrolment of 6 year old Children over 3 years

Description	2006 %	2007 %	2008	
			%	Number
Total % and number of children aged 6 years old	4%	3%	3%	1,065 person(s)
Total % of children aged 6 years old in school	73%	74%	79%	842 person(s)
Total % of children aged 6 years old not in school	27%	26%	21%	223 person(s)

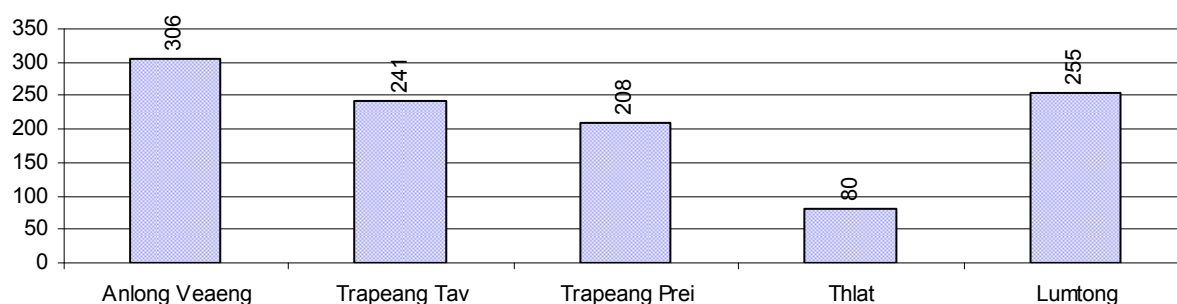
**Note:** First row calculated as a percentage of total population. Second and third row calculated as a percentage of the total number of 6 year olds.

### 3.1.10 Percentage of 6 year old Children not in School, by Commune, in 2008



**Note:** Calculated as a percentage of total 6 year old population

### 3.1.11 Number of 5 year old Children in each Commune in 2008

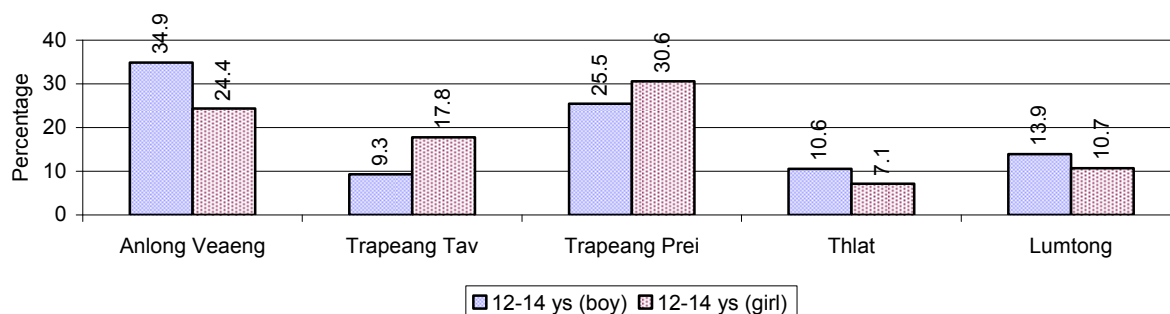


### 3.1.12 Enrolment at Lower Secondary Level over 3 years

Description	2006 %	2007 %	2008	
			%	Number
Total <b>children</b> aged 12-14 years old	10%	9%	8%	2,847 person(s)
Children aged 12-14 years old in school	80%	75%	79%	2,244 person(s)
Children aged 12-14 years old not in school	20%	25%	21%	603 person(s)
Total <b>girls</b> aged 12-14 years old	10%	9%	8%	1,392 person(s)
Girls aged 12-14 years old in school	80%	72%	79%	1,106 person(s)
Girls aged 12-14 years old not in school	20%	28%	21%	286 person(s)
Total <b>boys</b> aged 12-14 years old	9%	9%	9%	1,455 person(s)
Boys aged 12-14 years old in school	80%	78%	78%	1,138 person(s)
Boys aged 12-14 years old not in school	20%	22%	22%	317 person(s)

**Note:** Percentage is calculated on the basis of number of the total number of children within 12-14 yrs group, except for the first row of each section which is calculated on the basis of the total population.

### 3.1.13 Percentage of 12-14 year olds not in School, by Commune, in 2008



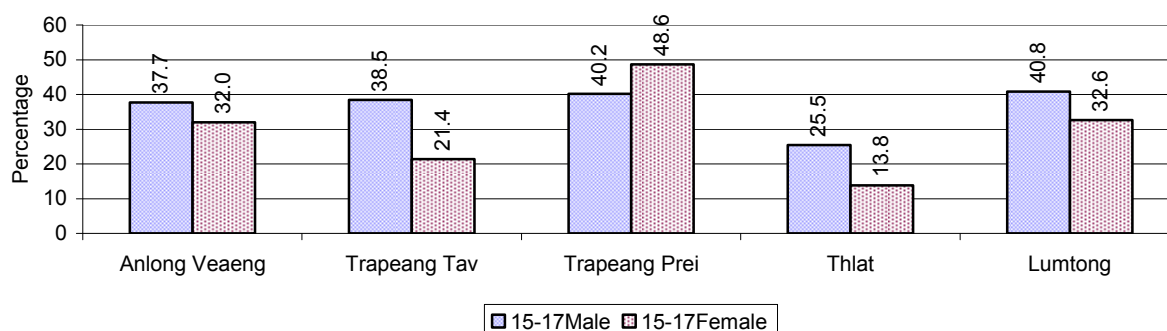
**Note:** Calculated as a percentage of the total 12-14 year old population in each commune

### 3.1.14 Upper Secondary Schools over 3 years

Description	2006	2007	2008
Number of upper secondary schools	0 school(s)	1 school(s)	1 school(s)
Number of upper secondary school rooms	0 room(s)	30 room(s)	30 room(s)
Number of upper secondary classes	0 class(es)	24 class(es)	25 class(es)
Number of upper secondary teachers	0 person(s)	34 person(s)	41 person(s)
Ratio of 15-17 yr olds to number of school	N/A	2,695	2,710
Ratio of 15-17 yr olds to number of school room	N/A	90	90
Ratio of 15-17 yr olds to number of classes	N/A	112	108
Ratio of 15-17 yr olds to number of teacher	N/A	79	66

**3.1.15 Enrolment of 15-17 year old teenagers over 3 years**

Description	2006	2007	2008
Number of teenage, 15-17 years old	2,449 person(s)	2,695 person(s)	2,710 person(s)
Number of teenage, 15-17 years old, who are not studying	1,016 person(s)	1,204 person(s)	946 person(s)
Percentage of teenage, 15-17 years old not studying	41%	45%	35%

**3.1.16 Percentage of 15-17 year old Teenagers not at School, by Commune, in 2008****3.1.17 Literacy Classes as of 2008**

Literacy classes	Organized by:		Other Program(s)	Total
	PDoEYS	NGOs		
Number of On-going literacy classes	0 class(es)	0 class(es)	0 class(es)	0 class(es)
Number of literacy students in on-going classes	0 person(s)	0 person(s)	0 person(s)	0 person(s)
Completed literacy class(es)	0 classes	0 classes	0 classes	0 classes
Number of literacy students that have completed literacy classes	0 person(s)	0 person(s)	0 person(s)	0 person(s)
Number of students that passed	0 person(s)	0 person(s)	0 person(s)	0 person(s)

**3.1.18 Number of on-going and completed Literacy Classes, by Commune, in 2008**

There were no classes in this District in 2008

**3.1.19 Students of on-going & completed Literacy Classes, by Commune, in 2008**

There were no students who had taken or were taking literacy classes in this District in 2008

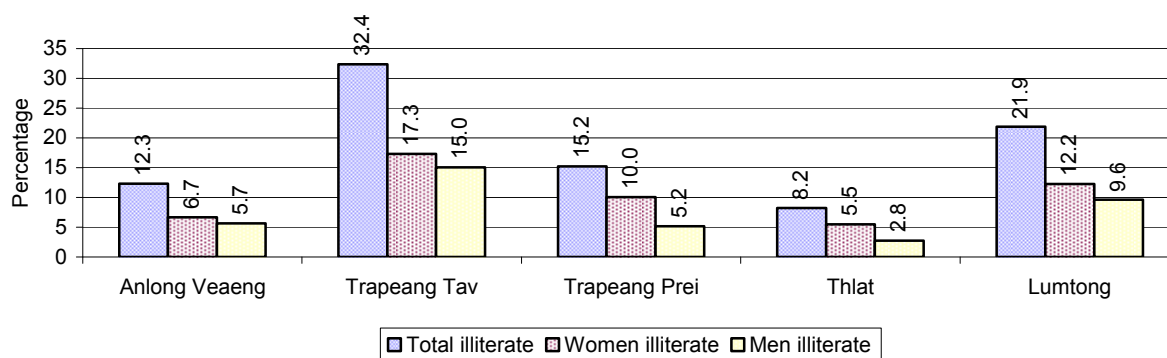
**3.1.20 Percentage of illiterate People between 15-60, over 3 years**

Illiteracy Status	2006	2007	2008	
	%	%	%	Number
Illiterate people, 15-60 years old	28%	18%	18%	3,592 person(s)
Illiterate females, 15-60 years old	14%	10%	10%	2,049 person(s)
Illiterate people, 15-17 years old	17%	11%	10%	282 person(s)
Illiterate females, 15-17 years old	9%	6%	5%	137 person(s)
Illiterate people, 18-24 years old	27%	15%	15%	689 person(s)
Illiterate females, 18-24 years old	12%	8%	9%	404 person(s)
Illiterate people, 25-60 years old	31%	21%	21%	2,621 person(s)
Illiterate females, 25-60 years old	16%	12%	12%	1,508 person(s)

**Note:** Percentage is calculated on the basis of number of people in age group.

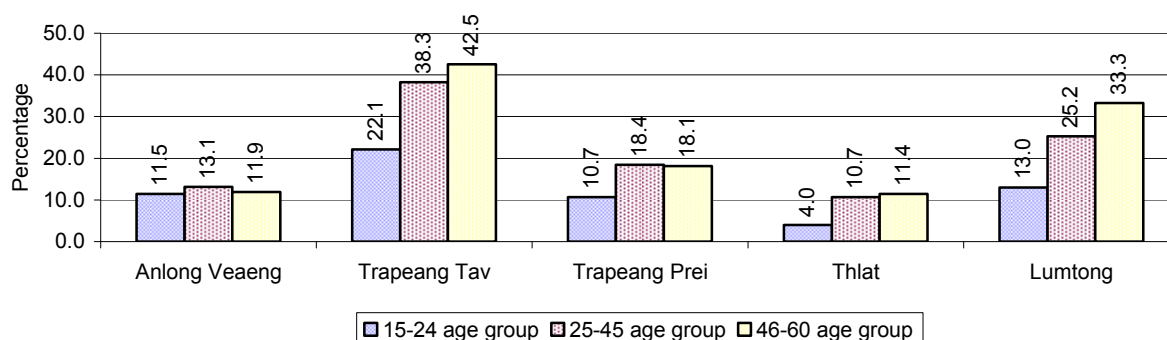


### 3.1.21 Percentage illiterate People among 15-60 yrs old, by Commune, in 2008



**Note:** Percentages are calculated on the basis of number of people in that age group.

### 3.1.22 Percentage illiterate People for 15-24 yrs, 25-45 yrs and 46-60 yrs, by Commune, in 2008



**Note:** Percentage of illiterate people in each age group is calculated on the basis of number of people in that age group.

## 3.2 Health

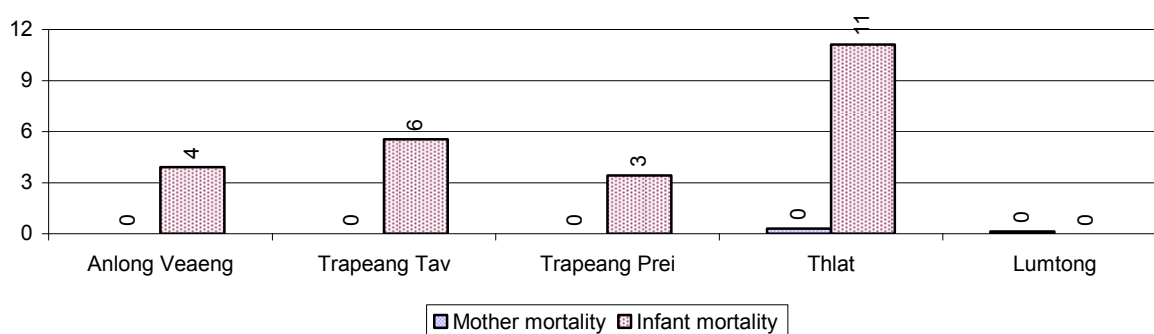
### 3.2.1 Health Situation of Women and Children, over 3 years

Description	2006	2007	2008
Number families with a birth during the year	562 families	650 families	680 families
Number of women who had their baby delivered by a TBA	342 person(s)	376 person(s)	278 person(s)
Percentage of women who had their baby delivered by a TBA	61 %	58 %	41 %
Number of women who had their baby delivered by a midwife	220 person(s)	274 person(s)	402 person(s)
Percentage of women had their baby delivered by a midwife	39 %	42 %	59 %
Number of mothers who died within 1 month of giving birth	6 person(s)	2 person(s)	2 person(s)
Mothers who died within 1 month of giving birth per 100,000 families having a delivery	1,068	308	294
Number of infants born during the year	567 person(s)	664 person(s)	680 person(s)
Number of Infants who died within 1 month	16 person(s)	17 person(s)	13 person(s)
Infants mortality within 1 month per 1,000 births	28	26	19

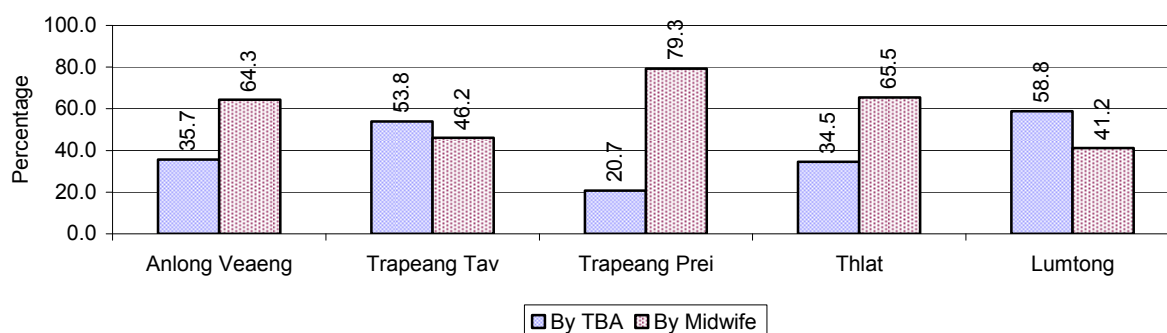
Description	2006	2007	2008
Number of children who died below the age of 5.	19 person(s)	13 person(s)	11 person(s)
Number of infants, aged 9-12 months, born during the year	260 person(s)	365 person(s)	307 person(s)
Nr. infants, aged 9-12 months, not receiving full immunization	56 person(s)	46 person(s)	50 person(s)
% of 9-12 months infants, not receiving full immunization	22 %	13 %	16 %

**Note:** TBA = Traditional Birth Attendant

### 3.2.2 Mothers dying within 0 days to 1 month of giving Birth and Infants dying within 1 month in 2008, by Commune

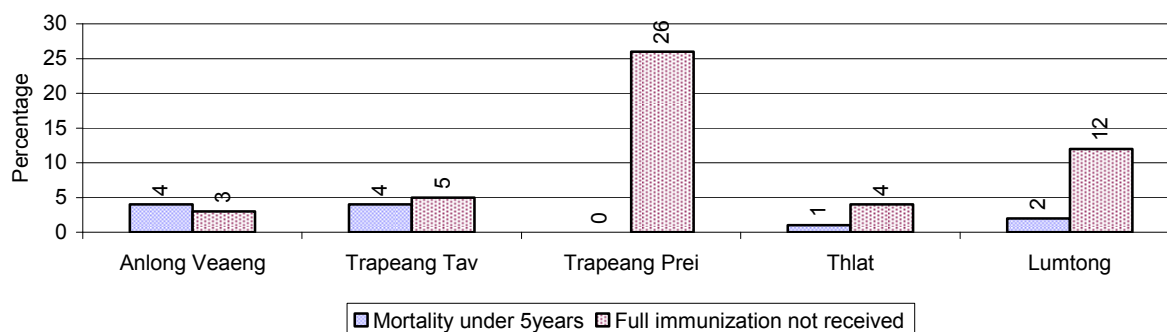


### 3.2.3 Percentage of Women delivering with a TBA or Midwife, by Commune



**Note:** Calculated as a percentage of total deliveries

### 3.2.4 Percentage of Children dying below 5 & of 9-12 months not receiving full Immunization, by Commune, in 2008



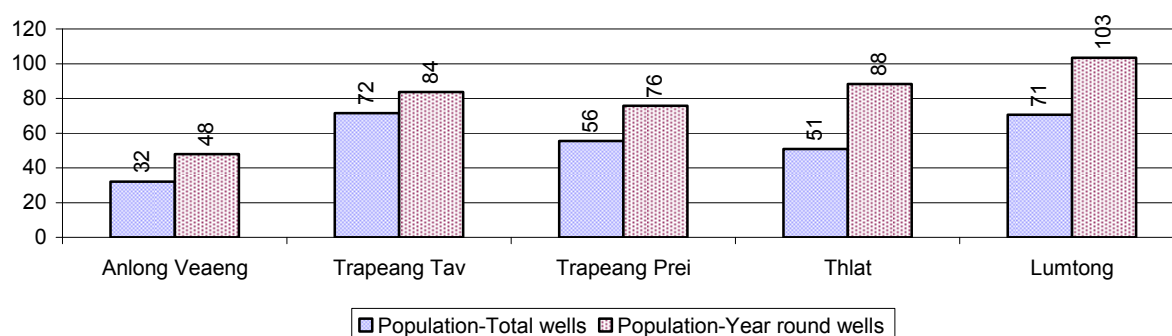
**Note:** Mortality rate calculated as a percentage of the total 5 year old population. Lack of immunization received calculated as a percentage of the total number 9-12 months olds there are

### 3.3 Water and Sanitation

#### 3.3.1 Number of different types of Wells over 3 years

Type of wells	Number of wells by year		
	2006	2007	2008
<i>Total number of pumped or mixed wells</i>	374	365	409
Year-round usable pumped or mixed wells	286	286	290
Dry season unusable pump or mixed wells	88	79	119
Pump or mixed wells needing repair/rehabilitation	110	112	103
<i>Total number of ring wells</i>	146	200	292
Year-round usable ring wells	93	149	201
Dry season unusable ring wells	53	51	91
Ring wells needing repair/rehabilitation	68	51	61
<i>Total number of unprotected dug wells</i>	182	220	228
Year-round usable unprotected dug wells	100	129	118
Dry season unusable unprotected dug wells	82	91	110

#### 3.3.2 Ratio of People to Wells, by Commune, in 2008

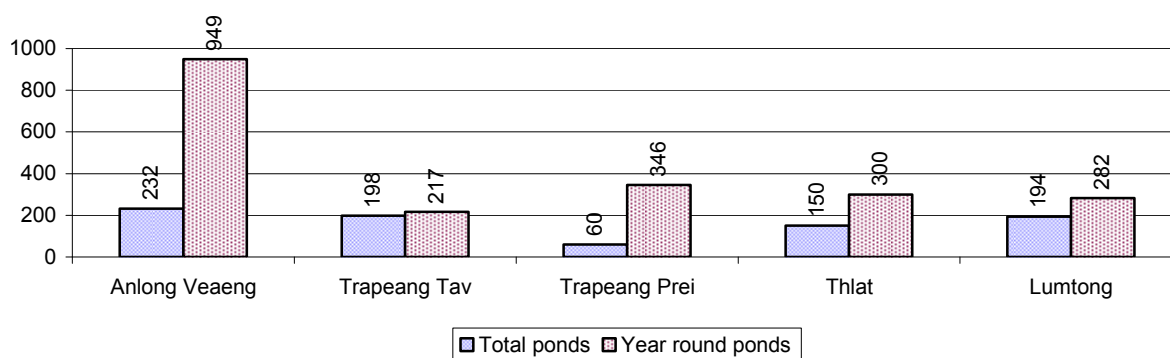


**Note:** Year-round wells excluding unprotected wells

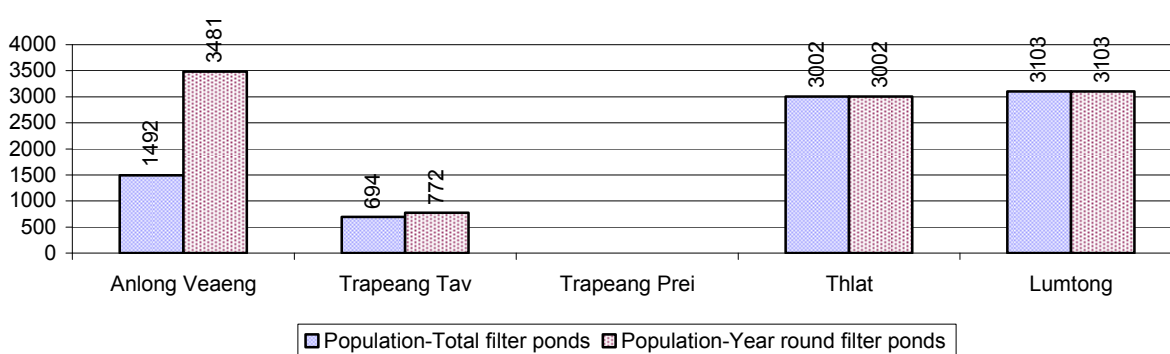
#### 3.3.3 Potable Ponds over 3 years

Type of Pond	2006	2007	2008
<i>Total number of normal-type ponds</i>	105 pond	181 pond	254 pond
Year-round usable normal-type ponds	49 pond	79 pond	96 pond
Dry season unusable normal-type ponds	56 pond	102 pond	158 pond
Normal-type ponds needing repair/rehabilitation	57 pond	56 pond	63 pond
<i>Total number of filter ponds</i>	18 pond	22 pond	20 pond
Year-round usable filter ponds	17 pond	15 pond	15 pond
Filter ponds, dry season unusable	1 pond	7 pond	5 pond
Filter ponds needing repair/rehabilitate	5 pond	2 pond	8 pond

### 3.3.4 Ratio of People to normal Ponds, by Commune in 2008



### 3.3.5 Ratio of People to Filter Ponds, by Commune, in 2008

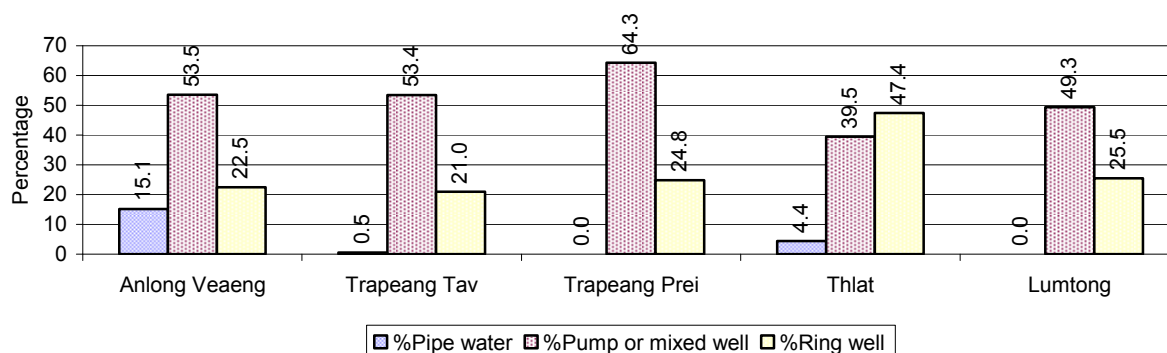


### 3.3.6 Source of potable Water for Households, over 3 years

Water sources	2006	2007	2008	
	%	%	%	Number
Families using water from purification system	4%	10 %	5 %	380 families
Families using water from pump, mixed wells	55%	50 %	54 %	4,096 families
Families using water from ring wells and open dug wells	20%	19 %	25 %	1,935 families
Families using water from pond	14%	18 %	14 %	1,060 families
Families using water from rain water storage	1%	0 %	0 %	12 families
Families using water from rivers, lakes, natural ponds and reservoirs	7%	2 %	2 %	120 families

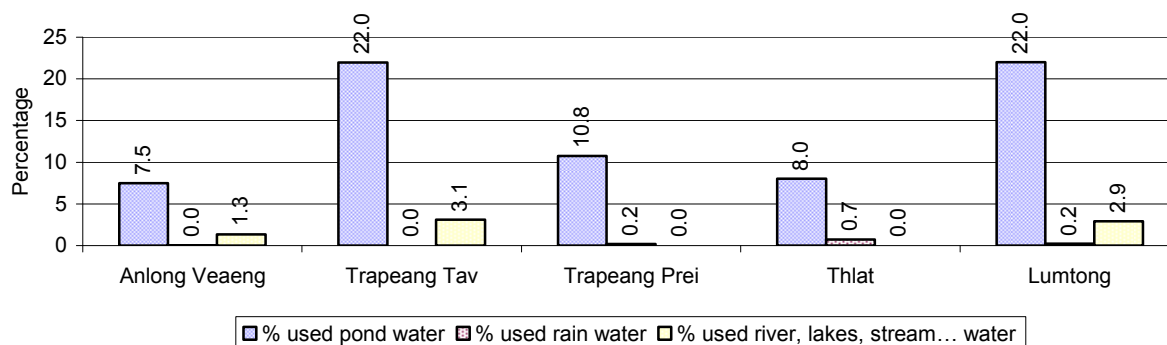
**Note:** Calculated as a percentage of the total number of families.

### 3.3.7 Percentage Families using different Water Sources, by Commune, in 2008



**Note:** Calculated as a percentage of the total number of families in each commune

### 3.3.8 Percentage Families using Water from Rain Water Storage, Ponds and natural Sources (rivers/lakes/natural ponds/reservoirs), by Commune, 2008



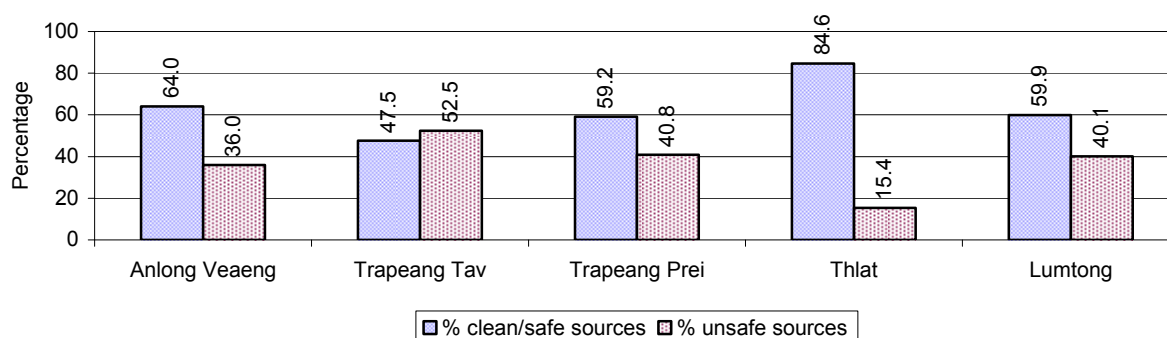
**Note:** Calculated as a percentage of the total number of families in each commune

### 3.3.9 Drinking Water Sources in the dry Season over 3 years

Percentage Families that get drinking water from:	2006	2007	2008	
	%	%	%	Number
from clean/safe sources	66 %	65 %	61 %	4,606 families
from unsafe sources	34 %	35 %	39 %	2,997 families

**Note:** Calculated as a percentage of the total number of families.

### 3.3.10 Percentage Families using safe and unsafe Water Sources in the dry Season, by Commune, in 2008



**Note:** Calculated as a percentage of the total number of families in each commune.

### 3.3.11 Drinking Water Purification by Households, over 3 years

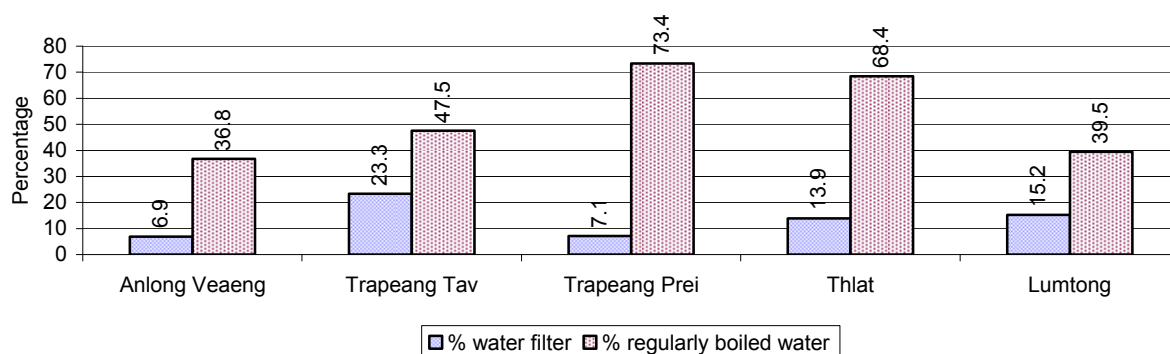
This table shows the different ways families make water safe for drinking.

Families, who:	2006	2007	2008	
	%	%	%	Number
Filter water for drinking	8%	13%	13 %	955 families
Boil water for drinking	45%	49%	50 %	3,838 families

**Note:** Calculated as a percentage of the total number of families

### 3.3.12 Percentage Families filtering Water or regularly boiling Water, by Commune, in 2008

This graph shows the different ways families make drinking water safe.



**Note:** Calculated on as a percentage of the total number of families in each commune.

### 3.3.13 Families' access to Water, over 3 years

Families access to water	2006	2007	2008	
	%	%	%	Number
Families with water at home or in less then 150m	54%	18%	21 %	1,593 families
Families with water 150m or more away from home	24%	25%	14 %	1,102 families

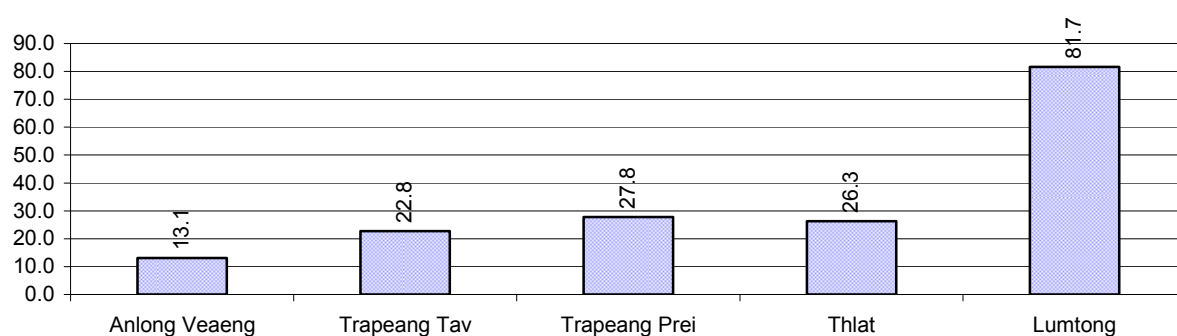
**Note:** Calculated as a percentage of the total number of families

### 3.3.14 Ratio of people to Latrines over 3 years

Description	2006	2007	2008	
	Ratio	Ratio	Ratio	Number
Ratio of people to latrines	24.2	20.7	21.8	1,556.0

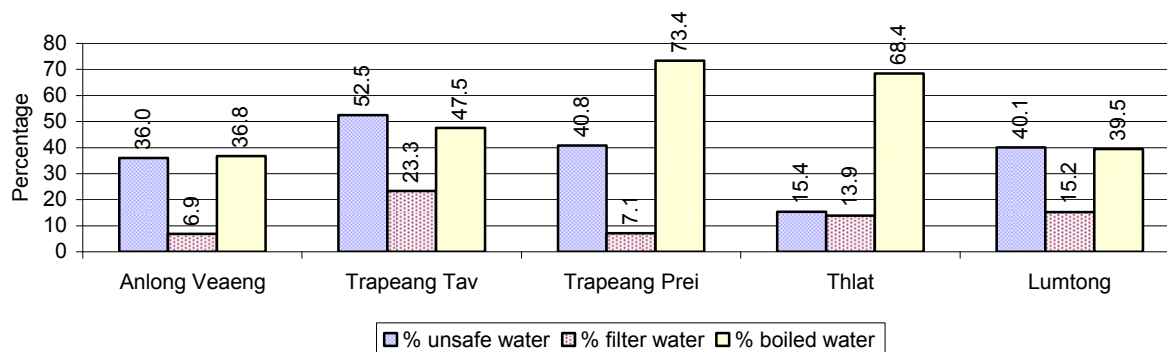
**Note:** Ratio calculated by dividing the number of houses with latrines by the total population

### 3.3.15 Ratio of People to Latrines, by Commune, in 2008



**Note:** Ratio calculated by dividing the number of houses with latrines by the total population in a Commune.

### 3.3.16 Percentage of Families drinking boiled, filtered or unsafe Water, by Commune, in 2008



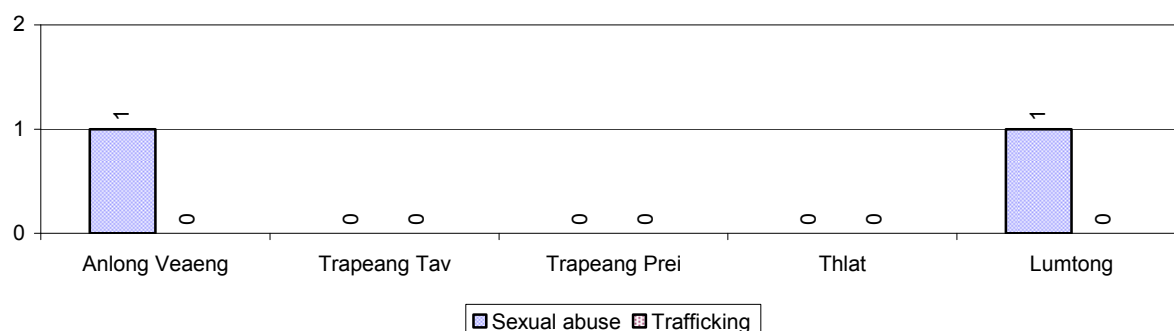
**Note:** Calculated as a percentage of the total number of families in each commune.

## 3.4 Vulnerable groups

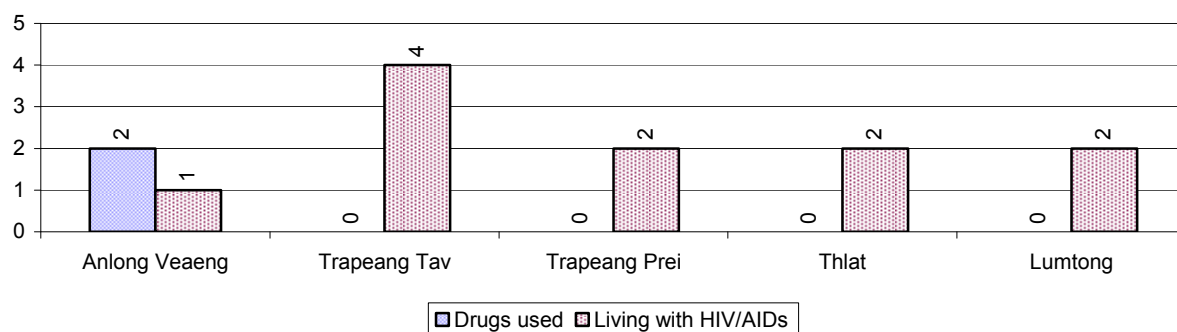
### 3.4.1 Vulnerable Groups in need of special Protection over 3 years

Vulnerable groups	2006	2007	2008
Victims of sexual abuse	2 person(s)	0 person(s)	2 person(s)
Victims of human trafficking	0 person(s)	0 person(s)	0 person(s)
Families with family member(s) using drugs	10 families	5 families	2 families
Families with family member(s) living with HIV/AIDS	3 families	4 families	11 families
Children under 18 yrs old whose parent died of AIDS	14 person(s)	16 person(s)	13 person(s)
Orphaned/abandoned children under 18 yrs old (all cases)	336 person(s)	76 person(s)	70 person(s)
Elderly persons without guardian	27 person(s)	22 person(s)	20 person(s)
Disabled people able to earn an income	69 person(s)	66 person(s)	68 person(s)
Disabled people unable to earn an income	36 person(s)	28 person(s)	25 person(s)
Disabled people under 18 yrs old	21 person(s)	15 person(s)	11 person(s)
Victims of natural disasters	342 families	269 families	172 families
Victims of land mines and unexploded weapons	28 person(s)	5 person(s)	4 person(s)

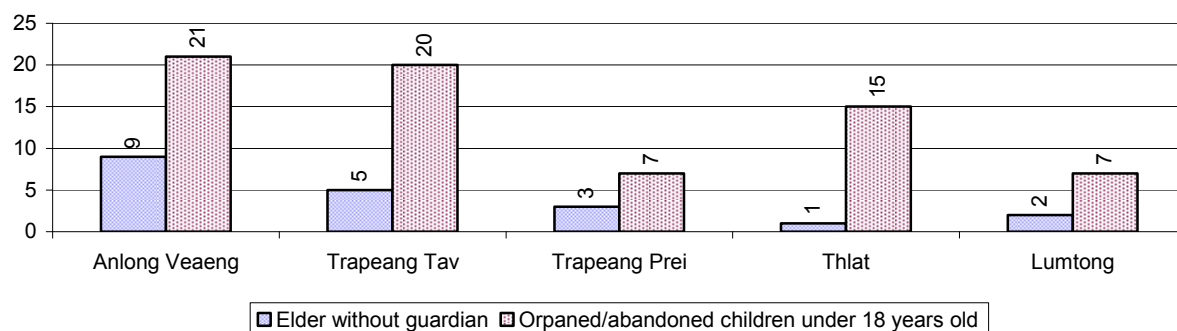
### 3.4.2 Registered Victims of sexual Abuse or Trafficking, by Commune, for 2008



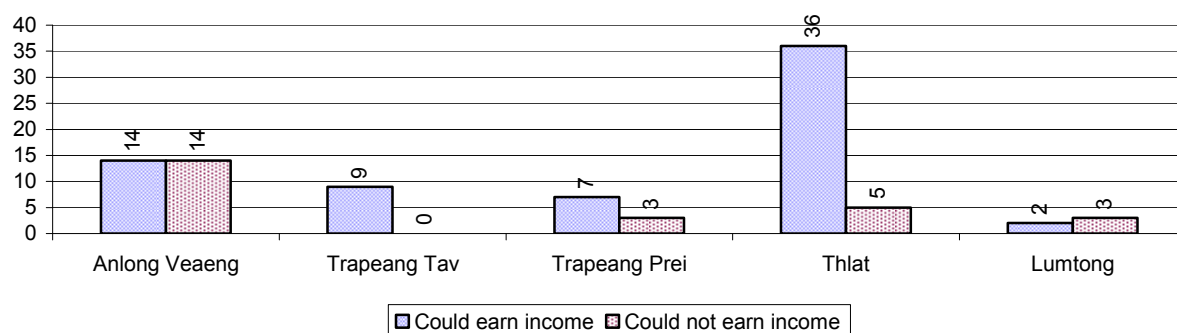
### 3.4.3 Registered Families with Member(s) using Drugs or living with HIV/AIDS, by Commune, for 2008



### 3.4.4 Elderly Persons without a Guardian and orphaned/abandoned Children under 18 years old, by Commune, for 2008

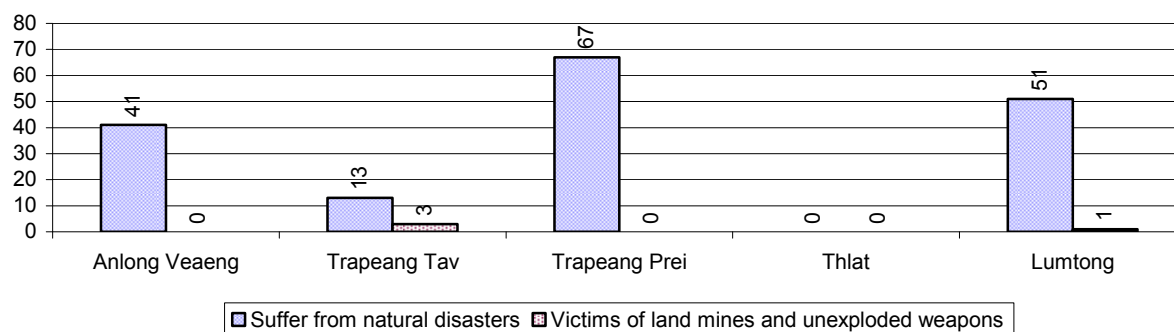


### 3.4.5 Number of disabled People who could or could not earn an Income, by Commune, for 2008





### 3.4.6 Number of Families who suffered from natural Disasters, and number of Victims of Land Mines and unexploded Weapons, by Commune, in 2008



## 3.5 Migration

### 3.5.1 Migration over 3 years

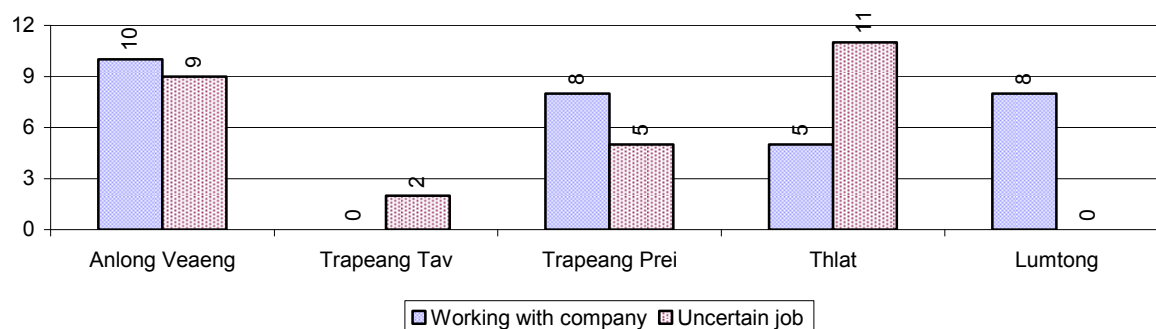
Description	2006	2007	2008
Number of families permanently in-migrated	241 families	270 families	245 families
Total number of people	1,030 person(s)	1,146 person(s)	1,004 person(s)
Total number of female	532 person(s)	585 person(s)	494 person(s)
Number of families permanently out-migrated	131 families	135 families	182 families
Total number of people	516 person(s)	541 person(s)	737 person(s)
Total number of female	286 person(s)	249 person(s)	366 person(s)
Number of families staying temporarily	481 families	391 families	167 families
Total number of people	1,980 person(s)	1,181 person(s)	693 person(s)
Total number of female	1,046 person(s)	619 person(s)	340 person(s)

### 3.5.2 Job Migration

Description	2006	2007	2008
Number of people migrated to work with company/factory	0%	0%	0% 31 persons
Number of people migrated to work, but have uncertain jobs	1%	0%	0% 27 persons

**Note:** Calculated as a percentage of the total population of 18-60 year olds

### 3.5.3 Number of People working outside their home Villages in a Company/Factory or with an uncertain Job in 2008

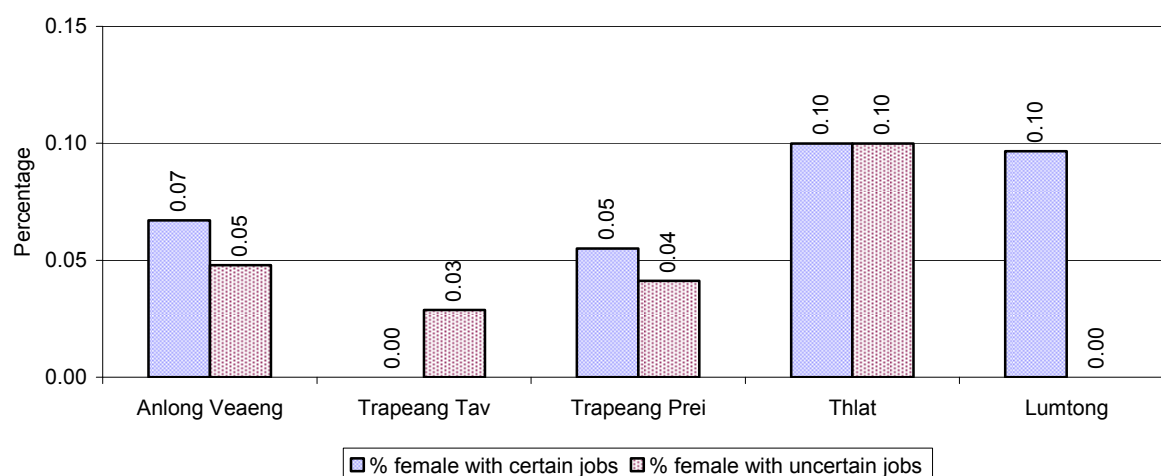


### 3.5.4 Female migration over 3 years

Description	2006 %	2007 %	2008	
			%	Number
Total number of migrants	0.4%	0.3%	0.2%	58 person(s)
Number of female migrants	0.2%	0.1%	0.1%	33 person(s)
Total number of migrants, who go to work with company/factory (with certain jobs)	0.1%	0.1%	0.1%	31 person(s)
Number of female migrants with certain jobs	0.1%	0.1%	0.1%	20 person(s)
Total number of migrants with uncertain jobs	0.3%	0.2%	0.1%	27 person(s)
Number of female migrants with uncertain jobs	0.1%	0.1%	0.0%	13 person(s)

**Note:** Calculated as a percentage of the total population

### 3.5.5 Percentage female Migrants with certain and uncertain Jobs, by Commune, in 2008



**Note:** Calculated as a percentage of the total population of the commune

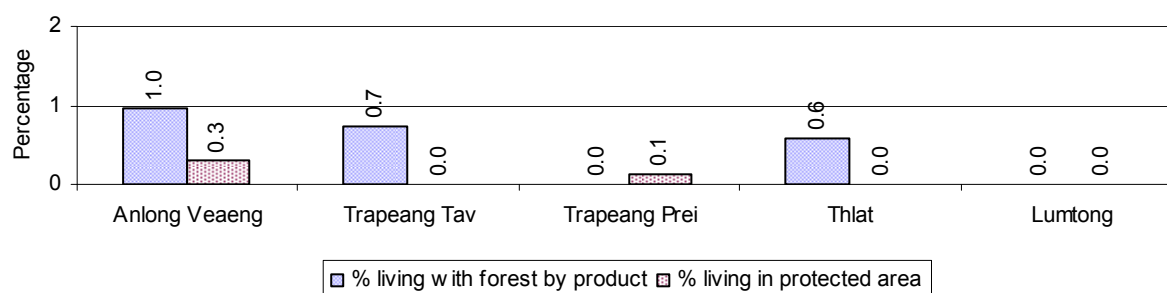
## 4 Natural Resources and Environment (NRE)

### 4.1 Families involved with NRE issues over 3 years

Description	2006 %	2007 %	2008	
			%	Number
Families living with forest by products	1 %	1 %	0 %	38 families
Families living in a protected area	1 %	0 %	0 %	9 families
Houses with access to garbage collection service	6 %	4 %	3 %	251 families
Families affected by environmental pollution	3 %	0 %	0 %	33 families
Families using chemical fertilizer	8 %	8 %	8 %	583 families
Families using chemical pesticide	6 %	3 %	3 %	231 families

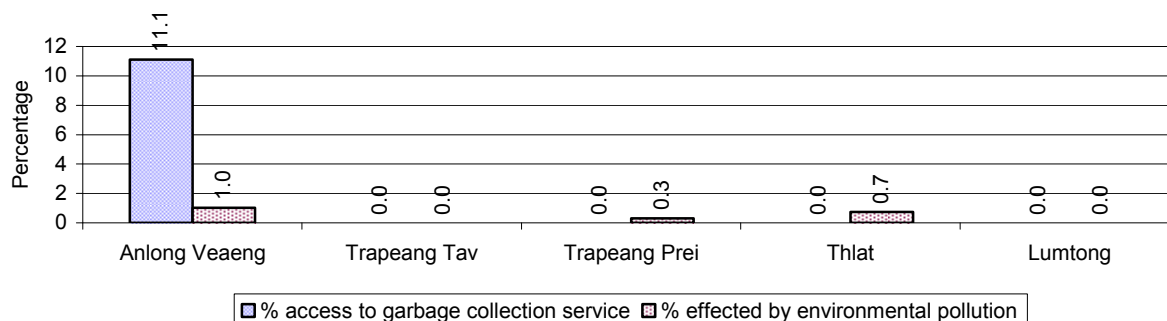
**Note:** Calculated as a percentage of the total number of families

### 4.2 Percentage of Families involved with Natural Resource issues, by Commune, for 2008



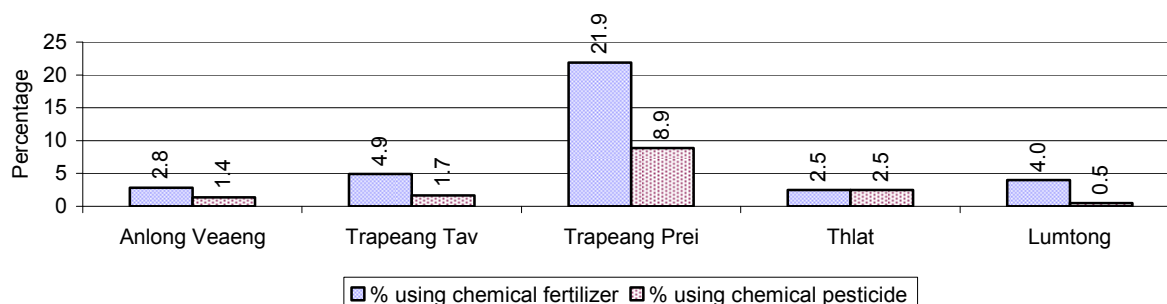
**Note:** Calculated as a percentage of the number of families in each commune

### 4.3 Percentage Houses with access to Garbage collection and Families affected by environmental Pollution, by Commune, for 2008



**Note:** Garbage collection is calculated as a percentage of the total number of houses in each commune and families affected by environmental pollution is calculated as a percentage of the total number of families in each commune.

### 4.4 Percentage Families using chemical Fertilizer and chemical Pesticides, by Commune, for 2008



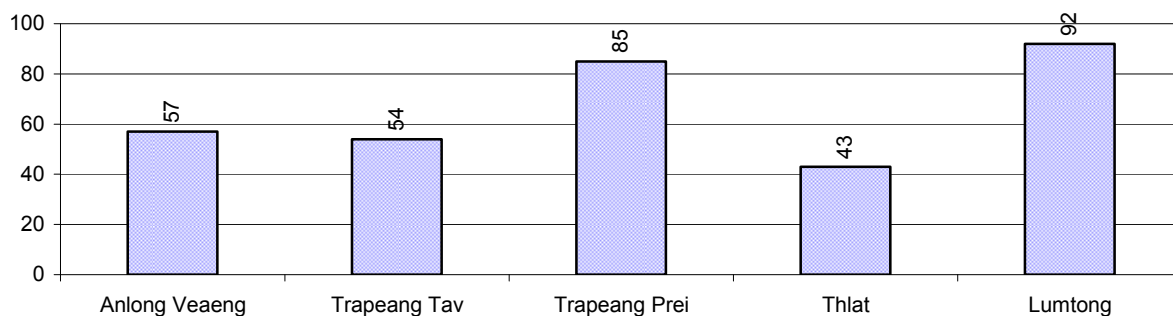
**Note:** Calculated as a percentage of the total number of families in each commune

## 5 Administration and Security

### 5.1 Birth Registration across 3 years

Description	2006	2007	2008
Number of infants to be registered	551 person(s)	647 person(s)	667 person(s)
Number of unregistered infants the year	284 person(s)	233 person(s)	331 person(s)
Percentage of infants unregistered	52 %	36 %	50 %

### 5.2 Number of unregistered Infants born in 2008, by Commune

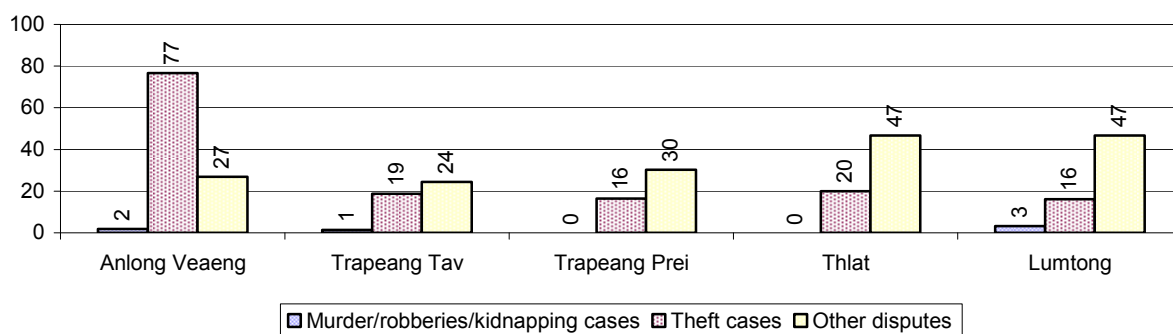


### 5.3 Registered criminal Cases over 3 years

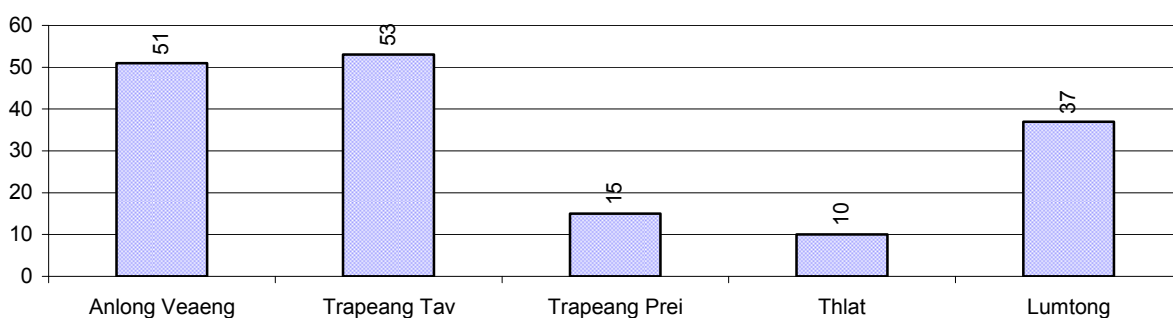
Description	2006	2007	2008
Murders, robberies and kidnapping cases	6 case(s)	5 case(s)	5 case(s)
Theft cases	105 case(s)	137 case(s)	121 case(s)
land dispute cases	258 case(s)	232 case(s)	166 case(s)
Other disputes cases	106 case(s)	271 case(s)	110 case(s)

*Note: this reflects only registered criminal cases*

### 5.4 Registered criminal Cases per 10,000 people, by Commune, for 2008



### 5.5 Number of registered Land Disputes, by Commune, in 2008

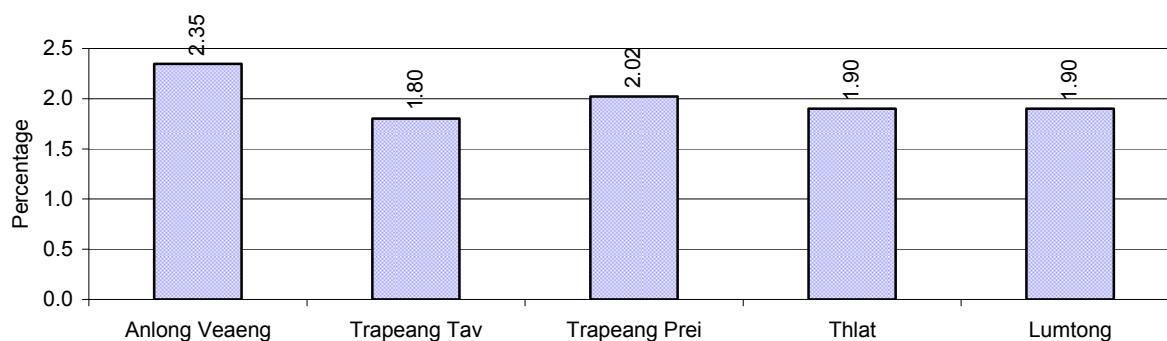


## 6 Gender

### 6.1 Registered Domestic Violence over 3 years

Description		2006	2007	2008
Families experiencing domestic violence		165 families	181 families	155 families(s)
% families experiencing domestic violence		3 %	3 %	2 %
Domestic violence cases reported by village chiefs		58 case(s)	43 case(s)	63 case(s)
Type	Physical violence	33 case(s)	33 case(s)	49 case(s)
	Sexual violence	3 case(s)	1 case(s)	0 case(s)
	Mental violence	19 case(s)	8 case(s)	14 case(s)
	Household economic violence	3 case(s)	1 case(s)	0 case(s)
Number of administrative decisions on domestic violence		0 case(s)	35 case(s)	44 case(s)
% of administrative decisions on domestic violence		0 %	81 %	70 %

### 6.2 Percentage of registered cases of Families experiencing domestic Violence, by Commune, in 2008



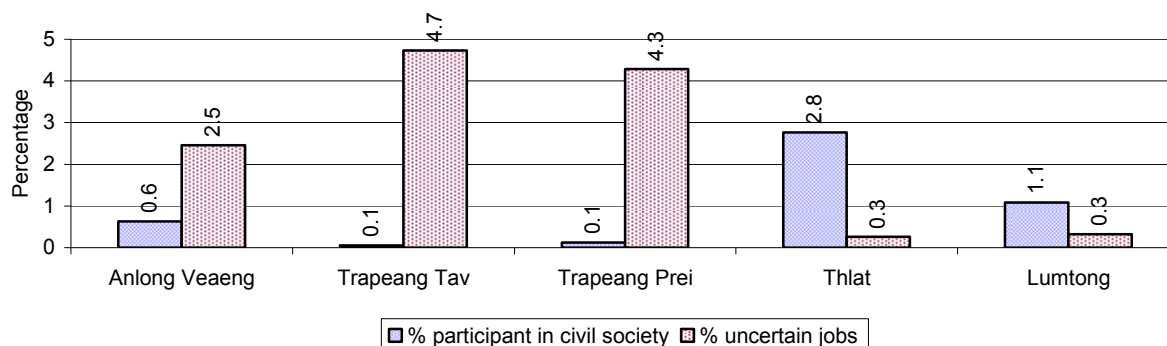
**Note:** Calculated as a percentage of the total number of families in each commune

### 6.3 Women's involvement over 3 years

Description	2006 %	2007 %	2008	
			%	Number
People participating in civil society	2%	2%	1%	400 person(s)
Women participating in civil society	1%	1%	1%	229 person(s)
People, 18-60 yrs, with uncertain/irregular jobs	3%	6%	6%	974 person(s)
Women, 18-60 yrs, with uncertain/irregular jobs	2%	3%	3%	462 person(s)

**Note:** Participation can be in NGOs, CBOs, credit groups, women's unions, parties and other civil society organizations. The first section is calculated as a percentage of the total population. The second section is calculated as a percentage of the total 18-60 year old population.

#### 6.4 Percentage of Female Participants in Civil Society and of 18-60 year women with uncertain Jobs, by Commune, in 2008



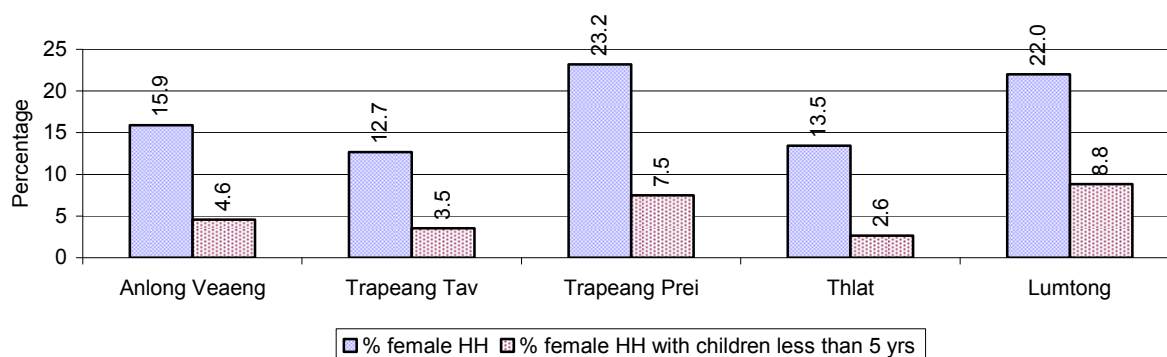
**Note:** Percentage of female participants in civil society is calculated as a percentage of the total population per commune. The percentage of 18-60 years old women with uncertain jobs is calculated as a percentage of the total 18-60 year old population per commune.

#### 6.5 Female-headed Households over 3 years

Families with:	2006	2007	2008	
	%	%	%	Number
Households in which a woman is the family head	27%	20%	18%	1,346 families
Households in which a woman is the family head with children of less than 5 yrs	11%	5%	6%	425 families

**Note:** Calculated as a percentage of the total number of families

#### 6.6 Percentage female-headed Households and with Children of less than 5 years old, by Commune, in 2008



**Note:** Calculated as a percentage of the total number of families in each commune  
HH: Headed Household

## 7 Indigenous People in the District

### 7.1 Ethnic Minorities in the District over 3 years

Race of indigenous	2006		2007		2008	
	# families	# population	# families	# population	# families	# population
Phnong	1 families	13 person(s)	1 families	10 person(s)	0 families	0 person(s)
Kouy	0 families	0 person(s)	0 families	0 person(s)	0 families	0 person(s)
Stieng	0 families	0 person(s)	0 families	0 person(s)	0 families	0 person(s)
Mil	0 families	0 person(s)	0 families	0 person(s)	0 families	0 person(s)
Kroal	0 families	0 person(s)	0 families	0 person(s)	0 families	0 person(s)
Thmorn	0 families	0 person(s)	0 families	0 person(s)	0 families	0 person(s)
Khaonh	0 families	0 person(s)	0 families	0 person(s)	0 families	0 person(s)
Tompouonn	3 families	11 person(s)	0 families	0 person(s)	0 families	0 person(s)
Charay	0 families	0 person(s)	0 families	0 person(s)	0 families	0 person(s)
Kroeung	0 families	0 person(s)	0 families	0 person(s)	0 families	0 person(s)
Kavet	0 families	0 person(s)	0 families	0 person(s)	0 families	0 person(s)
Saouch	0 families	0 person(s)	0 families	0 person(s)	0 families	0 person(s)
Lun	2 families	7 person(s)	0 families	0 person(s)	0 families	0 person(s)
Kachak	0 families	0 person(s)	0 families	0 person(s)	0 families	0 person(s)
Praov	0 families	0 person(s)	0 families	0 person(s)	0 families	0 person(s)
Others	0 families	0 person(s)	0 families	0 person(s)	0 families	0 person(s)
<b>Total</b>	6 families	18 person(s)	1 families	0 person(s)	0 families	0 person(s)

**Note:** "Others" refer to other ethnic groups which are not listed.

### 7.2 Other Minorities in the District over 3 years

Minority	2006		2007		2008	
	# families	# population	# families	# population	# families	# population
Khmer Islamic	10 families	43 person(s)	6 families	41 person(s)	9 families	38 person(s)
Vietnamese	3 families	26 person(s)	1 families	1 person(s)	6 families	24 person(s)
Laos	0 families	0 person(s)	0 families	0 person(s)	0 families	0 person(s)

**Note:** Number of indigenous and minority population are additional data, so some village may not recorded.





## **SECTION C: PLANS AND PROJECTS**



## 8 Priorities and Plans

### 8.1 Priorities of Commune Councils for 2009 in the District by Sector

The District Priority Activity Matrix (DPAM) data are taken from the CDPD. The DPAM is used for the District Integration Workshop (DIW), to show what kind of projects the commune has proposed in their Commune Investment Plan (CIP) for 2009. Donors, departments and other agencies then consider which projects they want to support and which projects they are not interested in. This results in Temporary Agreements between the Commune Council and the Supporter (NGO, Department, private donor, etc), as shown in table 8.2

No.	Project Name	Anlong Veaeng	Lumtong	Trapeang Tav	Trapeang Prei	Thlat	Req.Project
		220101	220106	220103	220104	220105	Total
Economic							
1	Compost fertilizer training				6 training	2 training	2
2	Chemical and pesticide application training	12 training				2 training	2
3	Rice seed production training	2 training				3 training	2
4	Subsidiary cropping technique training		3 training				1
5	Agricultural land expansion	417 ha			318 ha		2
6	Rice cultivation technique training		3 training				1
7	Animal vaccination request		2 Time	1 Time			2
8	Village veterinary training	1 training				1 training	2
9	Animal raising training					3 training	2
10	Pig raising training	1 training					1
11	Livestock feed producing training		3 training				1
12	Rice seed request	1440 Kg					1
13	Sow for raising request	60 Head					1
14	Family fish pond construction	28 Pond		5 Pond	15 Pond		3
15	Fish raising training	1 training					1
16	Fish fingerling request			40800 fingerling			1
17	Culvert construct across road	5 place		16 place	22 place	9 place	5
18	Earth road construction	7300 m	9700 m	6300 m	52400 m	1080 m	5
19	Laterite/natural gravel road construction	8716 m	4100 m	10800 m	12503 m	17380 m	5
20	Culvert construction		6 place				1
21	Bridger construction	2 place	2 place	3 place	6 place	3 place	6
22	Earth road repairing					500 m	1
23	Laterite/natural gravel road repairing	800 m		1500 m			2
24	Bridger repairing	1 place	3 place				2

## District Data Book 2009: Development Plans and Projects

No.	Project Name	Anlong Veaeng	Lumtong	Trapeang Tav	Trapeang Prei	Thlat	Req.Project
		220101	220106	220103	220104	220105	Total
25	Distribution canal rehabilitation				1000 m		1
26	Dam construction			550 m	45 m	30 m	3
27	Spillway construction				2 place	5 place	2
28	Irrigation pond construction	1 place			18 place		2
29	Dam repairing					3 place	1
30	Cash credit		9000000 Riels				1
31	Livestock bank	260 Head					1
32	Fish fingerling credit	6000 Head					1
Social							
1	Reproductive health awareness education	12 training			6 training	5 training	3
2	Antenatal care service accessibility improvement	12 training					1
3	HIV/AIDS awareness education			2 training			1
4	Health education service at health center			5 training			1
5	Children immunization provision				12 Month		1
6	Children and women vaccination	3 Time				3 Time	2
7	Mosquito nets distribution/treatment				1412 mosqui- net	2 Time	2
8	Malaria awareness education		1 training				1
9	Mosquito larvae removal treatment					2 Time	1
10	Health post construction/renovation	1 building			1 building		2
11	Maternal health care education				6 training		1
12	Dig pump well construction/repair				14 well		1
13	Latrine construction	70 toilet	209 toilet	200 toilet	206 toilet	770 toilet	5
14	Sanitation education				5 training		1
15	Pump wells construction	4 well		8 well		14 well	3
16	Ring wells construction	16 place		2 place	11 place	12 place	4
17	Ponds construction			4 Pond	3 Pond	5 Pond	3
18	Pump wells repairing					5 well	1
19	Ponds repairing					6 Pond	1
20	School building/furniture				3 building		1
21	Junior high school construction					12 room	1
22	School building	1 building					1
23	Primary school creation/construction		10 room	10 room		15 room	3

District Data Book 2009: Development Plans and Projects

No.	Project Name	Anlong Veaeng	Lumtong	Trapeang Tav	Trapeang Prei	Thlat	Req.Project
		220101	220106	220103	220104	220105	Total
24	Kindergarten school construction/repair	3 building	3 building	5 building	5 building	4 building	5
25	Motivating pupil's parents for school enrollment	12 training	3 training			3 training	4
26	Vocational training					3 training	1
27	Establish youth & children club			1 training			1
28	Elderly/children/disable protection association formation					12 training	1
<b>NREM</b>							
1	Fishery law education	12 training	3 training			2 Time	3
2	Forestry law education	12 training		3 training	6 training	5 training	4
3	NREM education campaign		3 training	2 training			2
4	Illegal fishing prevention			2 training		1 training	2
<b>Administration and Security</b>							
1	Civil registration encouragement	12 training	3 training		3 training	1 training	4
2	Administration and commune law training		3 training		3 training		2
3	Village level capacity building					5 training	1
4	Human rights and law training					5 training	1
5	Commune office construction/renovation				1 building		1
6	Village office construction/renovation				1 building		1
7	Land law dissemination	12 training	3 training		6 training	5 training	4
8	Disorder housing settlement prevention					12 training	1
9	Drug and related law education	12 training		2 training			2
10	Gambling control/elimination activation			3 time		2 time	2
11	Drug business/use prevention					12 training	1
12	Police post construction/renovation					1 building	1
13	Tough group control activation					2 training	1
14	Demining project			104 ha	127 ha	400 ha	4
15	Mine and UXO awareness education	12 training					1
16	Law/regulation dissemination			2 training			1
17	Human right and related law education					2 training	1
18	Penal and civil law dissemination	12 training					1
19	Hospitality and tourism law dissemination					2 training	1
20	Wedding/family law dissemination	12 training					1
<b>Gender</b>							
1	Women & Children FP strengthening		3 training				1
2	Women leadership strengthening/capacity building				6 training		1

District Data Book 2009: Development Plans and Projects

No.	Project Name	Anlong Veaeng	Lumtong	Trapeang Tav	Trapeang Prei	Thlat	Req.Project
		220101	220106	220103	220104	220105	Total
3	Woman and children's rights dissemination		3 training				1
4	Tailor skill training		1 training				1
5	Law against domestic violence dissemination	12 training	3 training	2 training	6 training		4
6	Rescue children & women from violence			9 training			1
7	Law against trafficking dissemination	12 training					1
8	Trafficking of women/children control activity strengthening			2 training		12 training	2

**Source:** CDPD – District Priority Matrix

## 8.2 Temporary Agreements by Commune, for 2009<sup>2</sup>

At the District Integration Workshop (DIW) the Supporters (donors, agencies, private donors, NGOs, etc.) identify which projects/activities they would like to support or they put forward their own projects to be implemented in a particular commune. Once there is agreement between Commune Councils and Supporters on specific projects a **Temporary Agreement** is signed by the commune and the Supporter to show their mutual commitment to the identified projects/activities.

It is important to keep in mind that such Temporary Agreements do not necessarily result in implementation.

### 8.2.1 Temporary Agreements for 2009 as per DIW 2008 for Commune: Anlong Veang

Commune GIS	Commune	Temporary Agreements				Supporter	Funding Source	Listed in CIP before DIW
		Project Name	Quantity	Unit	Est.Cost (K.Riels)			
Economic								
220101	Anlong Veaeng	Agricultural land expansion	0	ha	0	Department of Inspection		✓
220101	Anlong Veaeng	Fish fingerling credit	0	Head	0	Department of Agriculture Forestry and Fisheries		✓
220101	Anlong Veaeng	Earth road construction	0	m	0	Department of Land Management, Urban Planning & Construction		✓
Social								
220101	Anlong Veaeng	Dissemination of elimination of all forms of discrimination against women	7	training	287	Department of Rural Development		☐
220101	Anlong Veaeng	Latrine construction	2	time	177	Department of Women		✓
220101	Anlong Veaeng	Law against trafficking dissemination	1	training	308	Department of Women		✓
220101	Anlong Veaeng	Semester meeting between kindergarten project committee and beneficiaries	2	time	136	Department of Women		☐
220101	Anlong Veaeng	Annual provincial level workshop on WCFPs activities reflection	7	well	2870	Department of Rural Development		☐
220101	Anlong Veaeng	CWCC meeting on gender mainstreaming strategy in sector plans	7	training	144	Department of Rural Development		☐
220101	Anlong Veaeng	Antenatal care service accessibility improvement	0	training	0	Australians Caring for Refugees		✓

<sup>2</sup> Not all the data from the CDPD has been translated to English, this has resulted in some cells in the TA tables being blank.

District Data Book 2009: Development Plans and Projects

Commune GIS	Commune	Temporary Agreements				Supporter	Funding Source	Listed in CIP before DIW
		Project Name	Quantity	Unit	Est.Cost (K.Riels)			
220101	Anlong Veaeng	Female village leader, WCFPs and female councilors forum support	1	time	2460	Australians Caring for Refugees		<input type="checkbox"/>
Administration and Security								
220101	Anlong Veaeng	New water reservoir construction	1	place	2730	Department of Tourism		<input type="checkbox"/>
220101	Anlong Veaeng	Land law dissemination	1	training	800	Department of Land Management, Urban Planning & Construction		✓
220101	Anlong Veaeng	Irrigated pond construction	1	training	410	Department of Social and Veteran Affairs and Youth Rehabilitation		✓
220101	Anlong Veaeng	Wedding/family law dissemination	0	training	0	Department of Planning		✓
Gender								
220101	Anlong Veaeng	Self help group, disabled people	1	training	246	Department of Tourism		<input type="checkbox"/>
220101	Anlong Veaeng	District woman focal point capacity strengthening	1	time	94	Department of Women		<input type="checkbox"/>
220101	Anlong Veaeng	Semester meeting at provincial level to strengthen community kindergarten	2	time	250	Department of Women		<input type="checkbox"/>
220101	Anlong Veaeng	District level training on community kindergarten operation	1	time	240	Department of Women		<input type="checkbox"/>
220101	Anlong Veaeng	District level forum of village female leader, woman and children focal point and female councilors	2	time	850	Department of Women		<input type="checkbox"/>



**8.2.2 Temporary Agreements for 2009 as per DIW 2008 for Commune: Lumtong**

Commune GIS	Commune	Temporary Agreements				Supporter	Funding Source	Listed in CIP befor DIW
		Project Name	Quantity	Unit	Est.Cost (K.Riels)			
Social								
220106	Lumtong	Health care improvement	24	Time	280	Department of Health		<input type="checkbox"/>
220106	Lumtong	Water quality test	4	well	80	Department of Rural Development		<input type="checkbox"/>
220106	Lumtong	Repairing and maintaining skill training	4	well	1600	Department of Rural Development		<input type="checkbox"/>
220106	Lumtong	Pump wells construction/repair	4	well	1600	Department of Rural Development		<input type="checkbox"/>
220106	Lumtong	Health and sanitation sector support	24	Time	280	Department of Health		<input type="checkbox"/>
Administration and Security								
220106	Lumtong	Land law dissemination	1	training	800	Department of Land Management, Urban Planning & Construction		<input type="checkbox"/>
220106	Lumtong	Labor law dissemination	1	training	400	Department of Land Management, Urban Planning & Construction		<input type="checkbox"/>
Gender								
220106	Lumtong	Annual provincial level workshop on WCFPs activities reflection	1	training	254	Department of Women		<input type="checkbox"/>
220106	Lumtong	Semester meeting between kindergarten project committee and beneficiaries	2	time	176	Department of Women		<input type="checkbox"/>
220106	Lumtong	District level training on community kindergarten operation	1	time	307	Department of Women		<input type="checkbox"/>
220106	Lumtong	Semester meeting at provincial level to strengthen community kindergarten	2	time	139	Department of Women		<input type="checkbox"/>
220106	Lumtong	Dissemination of elimination of all forms of discrimination against women	1	time	254	Department of Women		<input type="checkbox"/>
220106	Lumtong	Village female leaders and women focal point forum	2	training	865	Department of Women		<input type="checkbox"/>
220106	Lumtong	District and commune woman focal point capacity strenghtening	1	time	99	Department of Women		<input type="checkbox"/>

Commune GIS	Commune	Temporary Agreements				Supporter	Funding Source	Listed in CIP before DIW
		Project Name	Quantity	Unit	Est.Cost (K.Riels)			
220106	Lumtong	Woman and children anti-trafficking law dissemination	1	training	240	Department of Tourism		<input type="checkbox"/>
220106	Lumtong	CWCC meeting on gender mainstreaming in sector plans	2	time	254	Department of Women		<input type="checkbox"/>

### 8.2.3 Temporary Agreements for 2009 as per DIW 2008 for Commune: Trapeang Tav

Commune GIS	Commune	Temporary Agreements				Supporter	Funding Source	Listed in CIP befor DIW
		Project Name	Quantity	Unit	Est.Cost (K.Riels)			
Economic								
220103	Trapeang Tav	Wells water storage	1	place	10000	Australians Caring for Refugees		<input type="checkbox"/>
220103	Trapeang Tav	Old water resources repairing	1	place	7200	Cambodian Red Cross		<input type="checkbox"/>
220103	Trapeang Tav	Small scale development project	5	village	8000	Cambodian Red Cross		<input type="checkbox"/>
220103	Trapeang Tav	Labor law dissemination	1	training	4000	Department of Labor and Vocational Training		<input type="checkbox"/>
Social								
220103	Trapeang Tav	Latrine construction	5	toilet	8000	Cambodian Red Cross		✓
220103	Trapeang Tav	New water reservoir construction	1	place	7200	Cambodian Red Cross		<input type="checkbox"/>
220103	Trapeang Tav	Latrine construction	5	village	8000	Cambodian Red Cross		<input type="checkbox"/>
220103	Trapeang Tav	Water quality test	4	well	600	Department of Rural Development		<input type="checkbox"/>
220103	Trapeang Tav	Health and sanitation sector support	24	Time	280	Department of Health		<input type="checkbox"/>
220103	Trapeang Tav	Health care improvement	24	Time	280	Department of Health		<input type="checkbox"/>
220103	Trapeang Tav	Self-help group formation	1	Time	2400	Cambodian Red Cross		<input type="checkbox"/>

District Data Book 2009: Development Plans and Projects

Commune GIS	Commune	Temporary Agreements				Supporter	Funding Source	Listed in CIP before DIW
		Project Name	Quantity	Unit	Est.Cost (K.Riels)			
220103	Trapeang Tav	Sanitation and hygiene education	5	village	8000	Cambodian Red Cross		<input type="checkbox"/>
220103	Trapeang Tav	Pump wells construction/repair	4	well	1760	Department of Rural Development		<input type="checkbox"/>
220103	Trapeang Tav	Repairing and maintaining skill training	4	well	160	Department of Rural Development		<input type="checkbox"/>
Administration and Security								
220103	Trapeang Tav	Land law dissemination	1	training	800	Department of Land Management, Urban Planning & Construction		<input type="checkbox"/>
220103	Trapeang Tav	Commune meeting for mine field data gathering	1	Time	96	Cambodian Mine Action Center		<input type="checkbox"/>
220103	Trapeang Tav	District workshop for data gathering on prioritized mine field	1	Time	320	Cambodian Mine Action Center		<input type="checkbox"/>
220103	Trapeang Tav	Provincial workshop to approve demining plan	1	Time	1060	Cambodian Mine Action Center		<input type="checkbox"/>
220103	Trapeang Tav	Mine field survey mission and visit demining land beneficiaries	1	Time	612	Cambodian Mine Action Center		<input type="checkbox"/>
Gender								
220103	Trapeang Tav	CWCC meeting on gender mainstreaming in sector plans	2	time	254	Department of Women		<input type="checkbox"/>
220103	Trapeang Tav	Dissemination of elimination of all forms of discrimination against women	1	time	254	Department of Women		<input type="checkbox"/>
220103	Trapeang Tav	Semester meeting at provincial level to strengthen community kindergarten	2	time	139	Department of Women		<input type="checkbox"/>
220103	Trapeang Tav	District level training on community kindergarten operation	1	time	307	Department of Women		<input type="checkbox"/>
220103	Trapeang Tav	Semester meeting between kindergarten project committee and beneficiaries	2	time	176	Department of Women		<input type="checkbox"/>
220103	Trapeang Tav	Annual provincial level workshop on WCFPs activities reflection	1	training	254	Department of Women		<input type="checkbox"/>
220103	Trapeang Tav	Female village leader, WCFPs and female councilors forum support	2	training	865	Department of Women		<input type="checkbox"/>

Commune GIS	Commune	Temporary Agreements				Supporter	Funding Source	Listed in CIP before DIW
		Project Name	Quantity	Unit	Est.Cost (K.Riels)			
220103	Trapeang Tav	Trafficking of women/children control activity strengthening	1	training	240	Department of Tourism		✓
220103	Trapeang Tav	District and commune woman focal point capacity strengthening	1	time	99	Department of Women		□

#### 8.2.4 Temporary Agreements for 2009 as per DIW 2008 for Commune: Trapeang Prei

Commune GIS	Commune	Temporary Agreements				Supporter	Funding Source	Listed in CIP before DIW
		Project Name	Quantity	Unit	Est.Cost (K.Riels)			
Economic								
220104	Trapeang Prei	Small scale development project	3	village	0	Cambodian Red Cross		<input type="checkbox"/>
220104	Trapeang Prei	New water reservoir construction	2	place	14400	Cambodian Red Cross		<input type="checkbox"/>
Social								
220104	Trapeang Prei	Water quality test	10	well	200	Department of Rural Development		<input type="checkbox"/>
220104	Trapeang Prei	Dig pump well construction/repair	10	well	4100	Department of Rural Development		<input checked="" type="checkbox"/>
220104	Trapeang Prei	Health and sanitation sector support	2	time	139	Department of Women		<input type="checkbox"/>
220104	Trapeang Prei	Latrine construction	3	toilet	0	Cambodian Red Cross		<input checked="" type="checkbox"/>
220104	Trapeang Prei	Land law dissemination	2	time	176	Department of Women		<input checked="" type="checkbox"/>
220104	Trapeang Prei	Health care improvement	1	time	307	Department of Women	PIF	<input type="checkbox"/>
220104	Trapeang Prei	Repairing and maintaining skill training	10	well	400	Department of Rural Development		<input type="checkbox"/>
Administration and Security								
220104	Trapeang Prei	Provincial workshop to approve demining plan	1	Time	1060	Cambodian Mine Action Center		<input type="checkbox"/>

District Data Book 2009: Development Plans and Projects

Commune GIS	Commune	Temporary Agreements				Supporter	Funding Source	Listed in CIP before DIW
		Project Name	Quantity	Unit	Est.Cost (K.Riels)			
220104	Trapeang Prei	District workshop for mine field data gathering and prioritizing	1	Time	320	Cambodian Mine Action Center		<input type="checkbox"/>
220104	Trapeang Prei	Commune meeting for mine field data gathering	1	Time	96	Cambodian Mine Action Center		<input type="checkbox"/>
220104	Trapeang Prei	Mine field survey mission and visit demining land beneficiaries	4	Time	612	Cambodian Mine Action Center		<input type="checkbox"/>
220104	Trapeang Prei	Demining land acquisition follow up and supervision	1	Time	612	Cambodian Mine Action Center		<input type="checkbox"/>
Gender								
220104	Trapeang Prei	CWCC meeting on gender mainstreaming in sector plans	2	time	250	Department of Women		<input type="checkbox"/>
220104	Trapeang Prei	Dig pump well construction/repair	2	time	865	Department of Women		✓
220104	Trapeang Prei	Sanitation education	1	time	254	Department of Women		✓
220104	Trapeang Prei	Village female leaders and women focal point forum	1	time	250	Department of Women		<input type="checkbox"/>
220104	Trapeang Prei	Annual provincial level workshop on WCFPs activities reflection	2	time	250	Department of Women		<input type="checkbox"/>
220104	Trapeang Prei	Semester meeting between kindergarten project committee and beneficiaries	1	time	94	Department of Women		<input type="checkbox"/>
220104	Trapeang Prei	District level training on community kindergarten operation	1	place	307	Department of Women		<input type="checkbox"/>
220104	Trapeang Prei	Dissemination of elimination of all forms of discrimination against women	1	time	250	Department of Women		<input type="checkbox"/>
220104	Trapeang Prei	District and commune woman focal point capacity strengthening	1	time	94	Department of Women		<input type="checkbox"/>
220104	Trapeang Prei	Woman and children anti-trafficking law dissemination	1	training	240	Department of Tourism		<input type="checkbox"/>
220104	Trapeang Prei	Semester meeting at provincial level to strengthen community kindergarten	2	time	139	Department of Women		<input type="checkbox"/>

**8.2.5 Temporary Agreements for 2009 as per DIW 2008 for Commune: Thlat**

Commune GIS	Commune	Temporary Agreements				Supporter	Funding Source	Listed in CIP before DIW
		Project Name	Quantity	Unit	Est.Cost (K.Riels)			
Economic								
220105	Thlat	Small scale development project	0	place	0	Cambodian Red Cross		<input type="checkbox"/>
220105	Thlat	Repairing and maintaining skill training	5	training	200	Department of Rural Development		<input type="checkbox"/>
Social								
220105	Thlat	Health and sanitation sector support	24	Time	280	Department of Health		<input type="checkbox"/>
220105	Thlat	Latrine construction	10	toilet	400	Cambodian Red Cross		✓
220105	Thlat	Pump wells repair	5	well	2200	Department of Rural Development		✓
220105	Thlat	Health care improvement	24	Time	280	Department of Health		<input type="checkbox"/>
220105	Thlat	Self help group, disabled people	1	Time	2400	Australians Caring for Refugees		<input type="checkbox"/>
220105	Thlat	New water reservoir construction	4	place	2800	Cambodian Red Cross		<input type="checkbox"/>
220105	Thlat	Water quality test	5	time	80	Department of Rural Development		<input type="checkbox"/>
220105	Thlat	Sanitation and hygiene education	2	time	400	Cambodian Red Cross		<input type="checkbox"/>
Administration and Security								
220105	Thlat	Commune meeting for mine field data gathering	1	Time	96	Cambodian Mine Action Center		<input type="checkbox"/>
220105	Thlat	District workshop to prioritize mine field	1	Time	320	Cambodian Mine Action Center		<input type="checkbox"/>
220105	Thlat	Labor law dissemination	1	training	400	Department of Social and Veteran Affairs and Youth Rehabilitation		<input type="checkbox"/>
220105	Thlat	Provincial workshop to approve demining plan	1	Time	1060	Cambodian Mine Action Center		<input type="checkbox"/>
220105	Thlat	Mine field survey mission and visit demining land beneficiaries	1	Time	612	Cambodian Mine Action Center		<input type="checkbox"/>
220105	Thlat	Demining land acquisition follow up and supervision	1	Time	612	Cambodian Mine Action Center		<input type="checkbox"/>
220105	Thlat	Land law dissemination	1	training	800	Department of Land Management, Urban Planning & Construction		✓
Gender								

District Data Book 2009: Development Plans and Projects

Commune GIS	Commune	Temporary Agreements				Supporter	Funding Source	Listed in CIP before DIW
		Project Name	Quantity	Unit	Est.Cost (K.Riels)			
220105	Thlat	Dissemination of elimination of all forms of discrimination against women	1	time	250	Department of Women		<input type="checkbox"/>
220105	Thlat	Trafficking of women/children control activity strengthening	1	training	240	Department of Tourism		✓
220105	Thlat	Village female leaders and women focal point forum	2	training	865	Department of Women		<input type="checkbox"/>
220105	Thlat	Annual provincial level workshop on WCFPs activities reflection	1	training	254	Department of Women		<input type="checkbox"/>
220105	Thlat	Semester meeting between kindergarten project committee and beneficiaries	2	time	176	Department of Women		<input type="checkbox"/>
220105	Thlat	District and commune woman focal point capacity strengthening	1	time	94	Department of Women		<input type="checkbox"/>
220105	Thlat	Semester meeting at provincial level to strengthen community kindergarten	1	time	307	Department of Women		<input type="checkbox"/>
220105	Thlat	CWCC meeting on gender mainstreaming in sector plans	2	time	250	Department of Women		<input type="checkbox"/>
220105	Thlat	District level training on community kindergarten operation	2	time	139	Department of Women		<input type="checkbox"/>

**Source:** CDPD, District Level Detail TA resulting from DIW

**8.3 Outputs, estimated and actual costs of C/S Fund Projects between 2005 and 2008, by Commune**

Commune	Project Type	Budget Year	Output		Quantity	Unit	Unit Cost MR	
			Description	Type			Estimate	Actual
Anlong Veang	Rural Transport	2005	Laterite road	New	2	Km	14.85	23.22
Anlong Veang	Rural Transport	2005	Single pipe culvert	New	1	Place	0.16	23.22
Anlong Veang	Rural Transport	2005	Earth road	New	0.6	Km	11.95	23.22
Anlong Veang	Rural Transport	2006	Triple pipe culvert	New	1	Place	8.05	22.73
Anlong Veang	Rural Transport	2006	Single pipe culvert	New	3	Place	6.07	22.73
Anlong Veang	Rural Transport	2006	Earth road	New	0.6	Km	14.39	40.24
Anlong Veang	Rural Transport	2006	Laterite road	New	0.636	Km	7.48	22.73
Anlong Veang	Rural Transport	2006	Single pipe culvert	New	1	Place	1.77	40.24
Anlong Veang	Rural Transport	2006	Laterite road	New	2	Km	25.22	40.24
Anlong Veang	Rural Transport	2007	Laterite road	Repair	1.58	Km	30.83	37.30
Anlong Veang	Rural Transport	2007	Single pipe culvert	New	2	Place	6.62	37.30
Anlong Veang	Rural Transport	2008	Single pipe culvert	New	1	Place	2.91	35.50
Anlong Veang	Rural Transport	2008	Earth road	Repair	0.86	Km	24.54	35.50
Anlong Veang	Rural Transport	2008	Double pipe culvert	New	1	Place	8.82	35.50
Lumtong	Rural Transport	2005	Laterite road	Repair	0.23	Km	9.86	16.99
Lumtong	Rural Transport	2005	Single pipe culvert	New	1	Place	3.52	16.99
Lumtong	Rural Transport	2005	Drift	Upgrade	1	Place	6.78	16.99
Lumtong	Rural Transport	2006	Laterite road	New	2.4	Km	32.84	32.16
Lumtong	Irrigation	2006	Concrete spillway	Repair	1	Place	5.34	6.03
Lumtong	Rural Transport	2007	Laterite road	Repair	0.52	Km	19.67	26.60
Lumtong	Rural Transport	2007	Wood bridge, 5 tonne standard, concrete abutments	New	2	Place	33.77	26.60
Lumtong	Rural Transport	2008	Laterite road	New	2.17	Km	53.11	25.90
Trapeang Tav	Rural Transport	2005	Double pipe culvert	New	1	Place	5.50	16.59
Trapeang Tav	Rural Transport	2005	Laterite road	New	1.325	Km	14.78	16.59
Trapeang Tav	Rural Transport	2006	Single pipe culvert	New	1	Place	1.83	25.49
Trapeang Tav	Rural Transport	2006	Laterite road	New	1.685	Km	24.42	25.49
Trapeang Tav	Rural Transport	2006	Double pipe culvert	New	1	Place	5.14	28.10
Trapeang Tav	Rural Transport	2006	Laterite road	New	1.325	Km	22.22	28.10
Trapeang Tav	Rural Transport	2007	Pipe culvert (general)	New	1	Place	1.72	26.90
Trapeang Tav	Rural Transport	2007	Laterite road	Repair	1.81	Km	25.28	26.90
Trapeang Tav	Rural Transport	2008	Earth road	Repair	0.51	Km	24.87	30.85
Trapeang Tav	Rural Transport	2008	Single pipe culvert	New	2	Place	6.27	30.85
Trapeang Prei	Rural Transport	2005	Earth road	New	0.6	Km	10.69	18.76



Commune	Project Type	Budget Year	Output		Quantity	Unit	Unit Cost MR	
			Description	Type			Estimate	Actual
Trapeang Prei	Rural Transport	2005	Earth road	Upgrade	1	Km	1.92	18.76
Trapeang Prei	Rural Transport	2005	Wood bridge, 5 tonne standard, wood abutments	New	1	Place	6.62	18.76
Trapeang Prei	Rural Transport	2005	Single pipe culvert	New	2	Place	3.96	18.76
Trapeang Prei	Rural Transport	2006	Laterite road	New	0.93	Km	17.41	20.90
Trapeang Prei	Rural Transport	2006	Single pipe culvert	New	2	Place	3.98	26.20
Trapeang Prei	Rural Transport	2006	Wood bridge, 5 tonne standard, concrete abutments	New	1	Place	8.63	26.20
Trapeang Prei	Rural Transport	2006	Earth road	New	0.6	Km	13.59	26.20
Trapeang Prei	Rural Transport	2006	Single pipe culvert	New	1	Place	3.56	20.90
Trapeang Prei	Rural Transport	2007	Single pipe culvert	New	2	Place	5.35	26.00
Trapeang Prei	Rural Transport	2007	Double pipe culvert	New	2	Place	9.20	26.00
Trapeang Prei	Rural Transport	2007	Laterite road	Repair	1.5	Km	37.70	26.00
Trapeang Prei	Rural Transport	2008	Double pipe culvert	New	1	Place	6.28	28.80
Trapeang Prei	Rural Transport	2008	Laterite road	New	0.55	Km	23.13	28.80
Thlat	Rural Transport	2005	Wood bridge, 5 tonne standard, wood abutments	New	1	Place	12.48	20.21
Thlat	Rural Transport	2005	Earth road	New	1	Km	10.45	20.21
Thlat	Rural Transport	2005	Single pipe culvert	New	1	Place	1.77	20.21
Thlat	Rural Transport	2006	Laterite road	New	2.207	Km	34.93	36.75
Thlat	Rural Transport	2006	Earth road	New	1	Km	10.76	12.61
Thlat	Rural Transport	2006	Single pipe culvert	New	1	Place	1.85	12.61
Thlat	Rural Transport	2006	Single pipe culvert	New	1	Place	1.85	36.75
Thlat	Rural Transport	2007	Laterite road	Repair	2	Km	43.82	29.30
Thlat	Rural Transport	2007	Single pipe culvert	New	4	Place	15.03	29.30
Thlat	Rural Transport	2008	Laterite road	New	0.73	Km	26.27	31.50
Thlat	Rural Transport	2008	Single pipe culvert	New	2	Place	5.82	31.50

Source: PID

#### 8.4 Total Expenditure on C/S Fund Projects by sector and commune between 2005 and 2008

Sector	Total Cost in Million Riels				
	Anlong Veang	Lumtong	Trapeang Tav	Trapeang Prei	Thlat
Irrigation		6.03			
Rural Transport	135.77	84.66	111.34	101.90	110.16

Source: PID

### 8.5 Actual 2009 C/S Fund projects by Commune

Commune	Project Type	Project Output		Quantity	Unit	Fund Source (Riels)		
		Description	Type			Total	C/S	Local Contribution
Anlong Veaeng	Rural Transport	Earth road	Repair	1.3	km	43,691,790	43,191,790	500,000
Anlong Veaeng	Rural Transport	Single pipe culvert 0.6m diameter	New	1	Place	43,691,790	43,191,790	500,000
Trapeang Tav	Rural Transport	Earth road	Repair	1.4	km	43,539,331	42,939,331	600,000

Source: PID

## 9 District level Projects from 2006 to 2009

District Initiative Projects (DIPs) are funded by Danida, DFID and PSDD (UNDP, DFID and SIDA).

### **Funding for 2006-2008**

Between 2006 and 2008 there were 14 provinces funded by PSDD and 10 by Danida and DFID. The list of provinces and who funded these is below

#### *Danida and DFID funded DIPs:*

Kampong Cham	Kampong Speu	Koh Kong	Kratie	Monduliri
Pursat	Ratanakiri	Siem Reap	Sihanoukville	Kep

#### *PSDD funded DIPs:*

Banteay Meanchey	Battambang	Kampong Chhnang	Kandal	Phnom Penh
Prey Veng	Svay Rieng	Takeo	Kampong Thom	Preah Vihear
Stung Treng	Kampot	Oddar Meanchey	Pailin	

### **Funding for 2009**

In 2009 there was a change to the number of provinces funded by the two streams. Danida and DFID were still funding the same 10 provinces they had been funding the previous three years, but two more provinces were added *Kampong Thom and Kampot*. Now PSDD funds 12 provinces and Danida and DFID fund 12.

## **9.1 District Initiative Infrastructure Projects from 2006 to 2009**

### **9.1.1 District Initiative Infrastructure Projects for 2006 to 2008**

*No District Initiative Infrastructure Projects were implemented in this district for 2006-2008*

### **9.1.2 District Initiative Infrastructure Projects in 2009**

*No District Initiative Infrastructure Projects have been implemented in this district for 2009*

## **9.2 District Initiative Service Projects from 2006 to 2009**

### **9.2.1 District Initiative Service Projects for 2006 to 2008**

*No District Initiative Service Projects were implemented in this district for 2006-2008*

### **9.2.2 District Initiative Service Projects in 2009**

*No District Initiative Service Projects have been implemented in this district for 2009*

## **9.3 Inter Commune Council Projects in 2008 and 2009**

### **9.3.1 ICC Projects in 2008**

*No ICC projects in this district at this time*

### **9.3.2 ICC Projects in 2009**

*No ICC projects in this district at this time*

**Source:** ICC project, Ministry of Interior (DoLA), -UNDP project for Local Governance – DDLG

## **9.4 Other Projects in 2008 and 2009**

### **9.4.1 RPRP**

*There are no RPRP projects being implemented in this district or province at this time. The RPRP is only being implemented in Svay Rieng and Prey Veng*

#### **9.4.1.1 RPRP Projects from 2006 to 2008**

*No RPRP projects in this district at this time*

#### **9.4.1.2 RPRP Projects in 2009**

*No RPRP projects in this district at this time*

## 9.4.2 Seth Korma

### 9.4.2.1 Seth Koma 2007

Description of Outputs/Activities	Budget (1 US\$ = 4000 Riels)
1.1 Monthly CCWC meeting	\$1,008
1.2 Quarterly CCWC meeting	\$658
1.3 Operation support cost	\$3,600
1.4 Village meeting on Child Rights and child protection	\$693
1.5 Village meeting on Immunization, health issues	\$693
1.6 village meeting on Education	\$693
1.7 Incentive CPS teachers for 10 months	\$10,050
1.8 Monitoring the functioning of CPS classes	\$536
1.9 Awareness raising on women and child rights	\$4,800
<b>GRAND TOTAL</b>	<b>\$22,731</b>

*Source: UNICEF*

### 9.4.2.2 Seth Koma 2008

Description of Outputs/Activities	Budget (1 US\$ = 4000 Riels)
Community able to identify and articulate critical development needs for children.	
CCWC monthly meetings (24 Communes)	\$1,008
CCWC quarterly meetings (24 Communes)	\$462
Operational support (24 Communes)	\$3,600
Village meeting on child rights and child protection (24 Communes)	\$693
Village meeting on health issues (24 Communes)	\$693
Village meeting on education (24 Communes)	\$693
Incentive for CPS teachers (22 Communes)	\$10,050
Monitoring the functioning of CPS classes (22 Communes)	\$536
Campaign on woman and child right (24 Communes)	\$4,800
<b>Sub-total for all outputs</b>	<b>\$22,535</b>
<b>Contingency cost</b>	<b>\$196</b>
<b>GRAND TOTAL</b>	<b>\$22,731</b>

*Source: UNICEF*

**9.4.2.3 Seth Koma 2009**

Description			Anlong Veaeng	Banteay Ampil	Chong Kal	Trapeang Prasat	Samraong	Total
# Comm.			5	4	4	6	5	24
# Village			47	74	25	38	47	231
Activity and budget	Ope. costs CCWC	Comm.	5	4	4	6	5	24
		Budget	\$1,000	\$800	\$800	\$1,200	\$1,000	\$4,800
	CPS	Village	27	10	25	28	13	103
		Budget	\$3,645	\$1,314	\$3,375	\$3,780	\$1,755	\$13,869
	Parenting Education	Village	47	10	25	38	17	137
		Budget	\$2,961	\$630	\$1,806	\$2,934	\$1,071	\$9,402
	CLTS	Village	0	27	0	0	13	40
		Budget	\$0	\$7,365	\$0	\$0	\$3,079	\$10,444
	PHAST	Village	0	15	4	0	0	19
		Budget	\$0	\$3,095	\$731	\$0	\$0	\$3,826
	Special health intervention	Support MMR	5	4	4	6	5	24
		Budget	\$1,000	\$800	\$800	\$1,200	\$1,000	\$4,800
	Outreach	Comm	1	1	0	1	0	3
		Budget	\$504	\$1,512	\$0	\$756	\$0	\$2,772
	Discretionary Fund	Comm.	1	1	0	1	0	3
		Budget	\$500	\$500	\$0	\$500	\$0	\$1,500
Village Mapping			\$66	\$162	\$0	\$81	\$0	\$309
Total			\$9,676	\$16,178	\$7,512	\$10,451	\$7,905	\$51,722

**Source:** UNICEF

## **SECTION D: SERVICES AND ORGANIZATIONS**





## 10 Infrastructure

### 10.1 Length of and Expenditure on Roads in 2008, by District

Roads	OMC	Anlong Veng	Banteay Ampil	Chongkal	Samrong	Trapeang Prssath
Length of paved road in the district	108	40	0	0	30	38
Length of unpaved roads in the district	259	18	12	39	190	0
Amount spent on construction of roads in 2008	555,074	37,043	34,838	41,613	400,276	41,305
Amount spent on repair and rehabilitation of roads in 2008	1,172,373	36,089	26,172	92,693	1,017,419	0

**Note 1:** Please note that these data are not necessarily complete or correct. The data are derived from government agencies at provincial and district level which used different recording systems, did not always have complete data or were, sometimes, less than willing to share their data.

**Note 2:** Please be aware that these data are incomplete due to the fact that the amounts for the construction, repair and rehabilitation recorded reflect only funds provided by the government, not the contributions by any other parties.

### 10.2 Scale of and Expenditure on Irrigation in 2008, by District

Irrigation	OMC	Anlong Veng	Banteay Ampil	Chongkal	Samrong	Trapeang Prssath
Number of irrigation schemes operating in 2008	9	3	2	2	2	n/a
Total nr of hectares under irrigation in dry season 2008	450	140	100	110	100	n/a
Total funds spent in 2008 on construction of irrigation systems	626,708	278,695	198,881	73,660	75,471	n/a
Total funds spent in 2008 on rehabilitation/repair of irrigation systems	18,530	9,400	3,500	2,530	3,100	n/a
Total funds spent in 2008 on operation and maintenance	645,238	288,095	202,381	76,190	78,571	n/a

**Note 1:** Please note that these data are not necessarily complete or correct. The data are derived from government agencies at provincial and district level which used different recording systems, did not always have complete data or were, sometimes, less than willing to share their data.

**Note 2:** Please be aware that the data above are incomplete as these only reflect funds provided by the government, not the contributions by farmers or other parties.

### 10.3 Power Supply in 2008, by District

Electricity	OMC	Anlong Veng	Banteay Ampil	Chongkal	Samrong	Trapeang Prssath
Total number of electricity connections to households	3,503	950	n/a	305	2,043	205
Total number of electricity connections to agencies, companies, organizations	86	10	n/a	7	66	3
Total volume in KWh of electricity consumed last in 2008	9,901,263	90,455	n/a	16,115	9,785,880	8,813
Total amount collected from users for consumed electricity	2,941,229	43,074	n/a	7,674	2,886,285	4,197
Per capita electricity consumption in 2008 in Kwh	256	3	n/a	1	167	0

**Note 1:** Please note that these data are not necessarily complete or correct. The data are derived from government agencies at provincial and district level which used different recording systems, did not always have complete data or were, sometimes, less than willing to share their data.

**Note 2:** These data only record electricity provided by electricity companies and does not include homes powered by generators or batteries (for this information see Section B: General Profile, Part 1: General Information; table 1.3.1 and chart 1.3.4).

**Note 3:** In most provinces electricity is only provided through town-based networks

**Note 4:** Per capita consumption is calculated by dividing the total volume of electricity produced in 2008 by the number of people living in each district as per the 2008 census (for the provincial data it is calculated against the number of people living in the province)

## 11 Health Facilities

Please note that the Operational District (health) boundaries are different to the administrative district boundaries. Therefore the data provided here shows the facilities, staff, NGOs etc in each Operational District within the province NOT the administrative district.

### Acronyms

<b>Com Cov</b>	Commune Covered	<b>MW2</b>	Secondary Midwives
<b>CPA</b>	Complementary Package of Activities	<b>NU1</b>	Primary Nurse
<b>Dr</b>	Doctor	<b>NU2</b>	Secondary Nurse
<b>FDH</b>	Former District Hospital	<b>OD</b>	Operational District
<b>HC</b>	Health Center	<b>Others</b>	Other Staff
<b>HC (NB)</b>	Health Center no building	<b>PHD</b>	Provincial Health Department
<b>HP</b>	Health Post	<b>Pop 04-05</b>	Population Covered 2004 or 2005
<b>MA</b>	Medical Assistant	<b>RH</b>	Referral Hospital
<b>MPA</b>	Minimum Package of Activities	<b>Vil Cov</b>	Village Covered
<b>MW1</b>	Primary Midwives	<b>VIL-HC</b>	Distance from Village to Health Center

### 11.1 Health Facilities in the Province, by Operational District

Otdar Mean Chey	OD	RH	HC	HP
Samraong	1	1	14	
<b>Total</b>	<b>1</b>	<b>1</b>	<b>14</b>	<b>0</b>

### 11.2 Health Facilities and Staff in the province, by Operational District

This table shows health facilities, staff and coverage of health facilities in each operational district.

No	Facility Name	Type	Class	Dr	Ma	Nu2	Nu1	Mw2	Mw1	Others	Com Cov	Vil Cov	Pop. 04-05
<b>Samraong</b>													
1	Ampil	FDH	MPA	0	0	5	7	0	2	2	1	23	10,203
2	Anlong Veang	FDH	MPA	2	1	15	20	1	1	5	4	36	19,883
3	Beng	HC	None MPA	0	0	1	10	0	0	3	1	16	8,657
4	Bos Sbov	HC	MPA	0	0	1	1	1	0	2	1	7	3,098
5	Chong Kal	FDH	MPA	0	0	4	5	0	3	3	2	14	11,068
6	Kaun Kriel	HC	MPA	0	0	1	2	0	0	3	4	23	12,379
7	Kouk Khpos	HC	MPA	0	0	1	10	0	0	3	3	19	7,599
8	Kouk Mon	HC	MPA	0	0	1	2	2	1	4	3	12	7,660
9	Ou Smach	HC	MPA	0	1	1	2	0	0	2	2	9	6,735
10	Pongro Ta Paen	HC	None MPA	0	0	4	5	0	3	3	2	10	7,141
11	Samraong	HC	MPA	0	0	1	1	0	1	3	3	20	19,310
12	Trapeang Prasat	HC	MPA	0	0	3	5	0	1	1	2	14	8,223
13	Trapeang Prei	HC	MPA	0	0	3	2	0	1	3	2	16	6,599
<b>Total:</b>				<b>2</b>	<b>2</b>	<b>41</b>	<b>72</b>	<b>4</b>	<b>13</b>	<b>37</b>	<b>30</b>	<b>219</b>	<b>128,555</b>

Source: MEDiCAM – Infrastructure - ([http://www.medicam-cambodia.org/hsi/health\\_system/srch/index.asp?cboLcn=6&cmdSearch=Search&cboCHName=&cboType=](http://www.medicam-cambodia.org/hsi/health_system/srch/index.asp?cboLcn=6&cmdSearch=Search&cboCHName=&cboType=))

### 11.3 Deliveries in 2007 in the Province, by Operational District

OD	Deliveries	Deliveries at home		Deliveries	Total deliveries	Total deliveries
	at HC	By Health Staff	By TBAs	at RH	by Health Staff	by health staff and TBAs
Samraong	1330	310	1310	209	1849	3159
<i>Sub-total</i>	<i>1330</i>	<i>310</i>	<i>1310</i>	<i>209</i>	<i>1849</i>	<i>3159</i>

Source: MoH, Annual Statistics 2007

## 12 Education<sup>3</sup>

### 12.1 Schools, Classes, Students, Staff, for all levels, for 2007/2008 by District

District	Number of Schools	Disadv. Schools	Number of Classes	Classes in Pagoda	Enrollment		Repeaters		Teaching Staff		Non-Teaching Staff		Total Staff	
					Total	Girl	Total	Girl	Total	Female	Total	Female	Total	Female
Anlung Veng	30	1	240	0	9,036	4,165	947	419	151	35	25	5	176	40
Banteay Ampil	59	6	345	0	11,417	5,216	1,596	731	229	24	40	1	269	25
Chong Kal	31	1	174	0	6,019	2,956	706	298	124	31	26	5	150	36
Samrong	42	0	314	0	12,155	5,725	1,269	527	229	80	39	7	268	87
Trapaing Prasat	27	4	197	0	6,522	2,966	788	347	127	31	27	2	154	33
<b>Whole Province</b>	189	12	1,270	0	45,149	21,028	5,306	2,322	860	201	157	20	1,017	221
- Urban Area	42	0	314	0	12,155	5,725	1,269	527	229	80	39	7	268	87
- Rural Area	117	11	716	0	23,958	11,138	3,090	1,376	480	86	93	8	573	94
- Remote Area	30	1	240	0	9,036	4,165	947	419	151	35	25	5	176	40

### 12.2 Characteristics of Schools and School Principals for 2007/2008 by Commune

Commune	Number of Schools				2 - Shift	Floating	Schools	Attached	Schools Without		Characteristics of School Principals (Incharge)			
	Pre-Sch	Primary	College	Lycee	Schools	Schools	in Pagoda	Pre-Sch	Water Sup.	Latrine	Avg. Age	Avg. Service	U.Sec+ Ed.	Female
Anlong Veang	1	5	0	1	6	0	0	1	1	1	30.4	15.3	1	0
Lumtong	0	5	1	0	6	0	0	0	2	1	39.8	9.3	1	0
Trapeang Tav	0	6	0	0	3	0	0	0	2	2	41.2	6.5	0	0
Trapeang Prei	0	5	1	0	5	0	0	0	2	1	38.2	8.0	1	0
Thlat	0	4	1	0	4	0	0	0	0	0	37.5	8.4	3	0

<sup>3</sup> All the data for section 12 comes from the Ministry of Education, Youth and Sport (MoEYS)

**12.3 Enrolment by Level of Education, 2006/2007 by Commune**

Commune	School	Pre school		Primary School		Lower Secondary School		Upper Secondary School		Enrolment	
		Total	Female	Total	Female	Total	Female	Total	Female	Total	Female
Anlong Veang	7	40	24	2148	1021	829	363	179	55	3196	1463
Lumtong	5	0	0	1302	573	65	23	0	0	1367	596
Trapeang Tav	5	0	0	1315	608	0	0	0	0	1315	608
Trapeang Prei	7	23	10	1590	728	216	93	0	0	1829	831
Thlat	4	0	0	1015	483	0	0	0	0	1015	483

**12.4 Enrolment by Level of Education, 2007/2008 by Commune**

Commune	School	Pre school		Primary School		Lower Secondary School		Upper Secondary School		Enrolment	
		Total	Female	Total	Female	Total	Female	Total	Female	Total	Female
Anlong Veang	7	44	23	2254	1048	829	392	271	85	3398	1548
Lumtong	6	0	0	1172	538	149	58	0	0	1321	596
Trapeang Tav	6	0	0	1351	639	0	0	0	0	1351	639
Trapeang Prei	6	0	0	1416	641	504	264	0	0	1920	905
Thlat	5	0	0	972	441	74	36	0	0	1046	477

**12.5 Aspects of Enrolment for 2007/2008 by Commune**

Commune	% Repeaters (Total)			% Over-age Enrollment (Total)			% Repeaters (Girl)			% Over-age Enrollment (Girl)		
	Primary	L.Sec.	U.Sec.	Primary	L.Sec.	U.Sec.	Primary	L.Sec.	U.Sec.	Primary	L.Sec.	U.Sec.
Anlong Veang	8.5	0.6	3.3	35.5	67.9	62.7	8.0	0.5	1.2	35.3	59.9	41.2
Lumtong	13.1	0.7	0.0	23.3	45.0	0.0	14.7	1.7	0.0	21.0	50.0	0.0
Trapeang Tav	12.5	0.0	0.0	33.1	0.0	0.0	11.3	0.0	0.0	31.1	0.0	0.0
Trapeang Prei	14.5	0.0	0.0	35.7	55.0	0.0	14.2	0.0	0.0	33.1	48.1	0.0
Thlat	21.5	4.1	0.0	32.5	33.8	0.0	19.7	5.6	0.0	29.7	13.9	0.0

**12.6 School Buildings for all schools in the District for 2007/2008, by Commune**

Commune	Total Number of		Concrete/Brick Structure		Wooden Structure		Bamboo Structure		New Buildings		Buildings Without Good		
	Buildings	Rooms	Buildings	Rooms	Buildings	Rooms	Buildings	Rooms	Repaired	Constructed	Floor	Roof	Wall
Anlong Veang	18	76	12	68	3	5	3	3	0	5	2	0	1
Lumtong	9	32	3	14	5	16	1	2	2	1	0	2	2
Trapeang Tav	8	28	3	15	2	6	3	7	3	1	4	4	4
Trapeang Prei	12	45	6	35	3	7	3	3	0	2	1	3	4
Thlat	6	28	4	21	2	7	0	0	0	1	0	0	0

**12.7 Conditions of Classrooms and Existence of Separate School Office and Library, by Commune**

Commune	Number of Class rooms	Number of Classrooms			Classrooms Without Good			Number of Furniture needed				Schools with Separate	
		in Pagoda	New Repaired	New Constr.	Floor	Roof	Wall	Desks	Chairs	Black-board	Teacher Table	Office	Library
Anlong Veang	64	0	0	21	2	0	1	298	298	8	9	3	2
Lumtong	25	0	4	5	0	4	4	250	2	10	9	4	1
Trapeang Tav	28	0	6	1	9	9	9	210	271	13	17	2	1
Trapeang Prei	34	0	0	0	1	3	4	70	60	1	3	3	2
Thlat	19	0	0	5	0	0	0	0	0	0	1	4	2

**12.8 Community Participation and Financing across all schools in the District for 2007/2008 by Commune**

Commune	Parent Association				Comm. Teachers	Teaching Monks	PAP Fund (Riel)		Number of Schools Obtaining Funds from				
	Exists	Held Meet	Total	Female			per Student	per School	Sch. Income	Community	Gvt. For building	Abroad	IOs/NGOs
Anlong Veang	7	6	4	1	0	0	9,188	4,142,257	0	3	0	0	0
Lumtong	6	5	3	2	0	0	7,231	1,976,940	1	1	0	0	0
Trapeang Tav	6	6	4	1	0	0	9,511	4,384,400	0	3	0	0	0
Trapeang Prei	6	5	3	2	0	0	8,463	2,564,208	1	0	0	2	0
Thlat	4	4	4	1	0	0	8,358	2,120,750	0	2	0	0	0

**12.9 Percentage Student Flow Rates and Graduation by level 2006/2007, by Commune**

Commune	Primary Level (Grades 1-6)			Lower Secondary Level (Grades 7-9)			Upper Secondary Level (Grades 10-12)			Successful Candidates		
	Promotion	Repetition	Dropout	Promotion	Repetition	Dropout	Promotion	Repetition	Dropout	Grade 6	Grade 9	Grade 12
Anlong Veaeng	84.8	8.9	6.2	87.7	0.6	11.7	74.9	5.0	20.1	210	140	20
Lumtong	53.9	10.3	35.8	83.1	1.5	15.4	0.0	0.0	0.0	74	0	0
Trapeang Tav	62.7	12.2	25.1	0.0	0.0	0.0	0.0	0.0	0.0	55	0	0
Trapeang Prei	79.2	12.9	7.9	88.0	0.0	12.0	0.0	0.0	0.0	266	0	0
Thlat	67.1	20.6	12.3	0.0	0.0	0.0	0.0	0.0	0.0	86	0	0

## 13 Staff and Resources at the District

*This chapter presents data from the District Information System, collected around the middle of 2009 unless otherwise specified.*

### 13.1 District Councilors elected in 2009

Name	Sex	Year of Birth	Function	Phone
ព្រីយ សារីន	M	1952	Chairperson of The Council	011-618 358
ដូ ឈុនី	M	1955	Councillor	012-209 040
ជិន សារ៉ង់	M	1953	Councillor	012-306 108
បាន សៀក	M	1954	Councillor	011-649 476
ញ៉ែម អេន	M	1961	Councillor	012-628 124
អោម សុវ៉ាត	M	1952	Councillor	011-787 062
ប៉ាញ សំអុន	M	1958	Councillor	011-334 654
ឃុន សី	M	1957	Councillor	017-506 481
ទូច ពា	M	1955	Councillor	092-103 423
អ៊ុក ម៉ាឡៃ	F	1957	Councillor	012-753 482
សេង សំហៀន	M	1957	Councillor	099-283 102
ជិម ធី	F	1957	Councillor	092-476 120
ញ៉ែម សាមុត	M	1958	Councillor	017-221 562

### 13.2 Committees of the Council

*Please note at the time of producing the district data books the composition of the committees was not known for all district councils and therefore data were not available for 13.2.1, 13.2.2, 13.2.3.*

#### 13.2.1 Technical Facilitation Committee

#### 13.2.2 Women's and Children's Affairs Committee

#### 13.2.3 Procurement Committee



### 13.3 Board of Governors

Name	Sex	DoB	Function	Salary Level	Body	Phone
យ៉ឹម ផាណា	M	1955	District Governor	ក.២.៤	Ministry of Defense	011-717 227
ទីម សាវ៉េត	M	1968	District Deputy Governor	ក.៣.១០	High Ranking Civil Servant	011-505 027
គង់ ម៉ុំ	F	1957	District Deputy Governor	ខ.៣.១២	Medium Civil Servant	011-561 347
ប៊ែន វណ្ណៈ	M	0000	District Deputy Governor			

### 13.4 Offices under Sala Krong, Sala Srok and Sala Khan

Office Name	Chief		Deputy Chief		No. of Staff				Office Area (m2)	No of vehicle (public or program)	
					State		Contract			vehicle	moto
	M	F	M	F	M	F	M	F			
District/ Khan Cabinet	1	0	0	0	0	0	0	0	20	0	0
Adminnistration Office	1	0	0	0	4	0	1	0	20	0	0
Economy Office	0	0	1	0	3	0	0	0	20	0	0
Social Affair Office	1	0	0	0	3	1	0	0	20	0	0

### 13.5 Municipality/District/Khan line offices

Office Name	Chief		Deputy Chief		No. of Staff				Office Area (m2)	No of vehicle (public or program)	
					State		Contract			vehicle	moto
	M	F	M	F	M	F	M	F			
Women Affairs Office	0	1	0	0	0	0	0	0	Borrow	0	0
Education Office	0	0	2	0	0	0	0	0	22.2	0	0
District/ Khan Operational Office	1	0	2	0	34	6	0	1	21387	0	0
Agriculture Office	1	0	1	0	9	0	0	0	1890	0	4
Social Affairs Office	1	0	0	0	1	1	0	0	Borrow	0	0
Post Office	1	0	0	0	0	0	0	0	200	0	0
Lan Management Office	1	0	2	0	3	0	0	0	187	0	0
Tax Unit	1	0	0	0	2	2	0	0	Borrow	0	0
Tourism Office	1	0	0	0	0	0	0	0	Borrow	0	0

## 13.6 Properties and Equipment of District Administration

### 13.6.1 Buildings

Description	Unit	Number	Remark
Office building type			
- Concrete	building	3	
- Wood	building	1	
- Mixed	building	0	
Total floor space	m2		
- Concrete	m2	542	
- Wood	m2	120	
- Mixed	m2	0	
Building condition			
- Concrete	%	100	
- Wood	%	100	
- Mixed	%	0	
Office reserved land area	m2	0	
Total office land area	m2	8,437	

### 13.6.2 Means of Transport available at the District Administration

Description	Unit	Number	Remark
Vehicle (type, size and condition)	Vehicle	0	
Motorcycle (type, size and condition)	Motor	0	

### 13.6.3 Equipment in District Offices

Description	Unit	Number	Remark
Generator	per set	1	
Photocopy machine at the office	per set	1	
Private photocopy machine at the district town	place	5	
Telephone network (mobile line service)	network	4	
Telephone network (land line service)	network	0	
Fax (include Fax number)	per set	0	
Computer	per set	1	
Printer	per set	1	
Scanner	Per set	0	
Number of computers those can access Internet and email services in the municipality/ district/khan office (including the technical line offices (please provide the email address)	set	0	
Typewriters (including the technical line offices)	per set	1	
Staff of Municipality/district/khan office can use computer	person	2	

### 13.6.4 Equipment and facilities at the District Town

Description	Unit	Number	Remark
Availability of electricity at noon	Nr Hours	12	
Private internet and email services in the municipality/ district/khan town.	place	0	

### 13.7 Registered Revenue of the District Administration in 2008<sup>4</sup>

Sources of Revenue	Revenue Collecting Agency	Estimated annual revenue (In Riels)
Slaughter Hosue	Provincial Department of Agriculture	3,000,000
Taxes	District/ Khan Taxation Unit	9,600,000

### 13.8 Services in the District

#### 13.8.1 Public Sector Services

Type of Infrastructure/services	Unit	Number	
		Public	Private
Schools			
Pre-school	room	1	0
Primary School	room	211	0
Secondary school	room	22	0
High School	room	30	0
University	room		
Health			
Health post	place		
Health center	place	3	0
Referral Hospital	bed		

### 13.9 Civil Society Organizations active in the District

#### 13.9.1 NGOs, Associations, Programs and Projects

Name	Abbr.	Sector Activities	No. of Target Communes	No. of Target Villages	Office in District
NA	KBA	កសិកម្ម	3	28	No
NA	NA	កសិកម្ម អប់រំ	3	15	Yes
NA	HT	បោសសំអាតមីន និងអប់រំពីមីន	5	5	Yes
NA	ZOA	កសិកម្ម ធារាសាស្ត្រ គ្រោះ មហន្តរាយ រៀបចំប្រើប្រាស់ដីធ្លី	4	40	Yes
NA	FRC/CRC	អមាម័យ ទឹកស្អាត	5	15	Yes
NA	STEC	គ្រប់គ្រងគ្រោះភ័យនៃគ្រោះ មហន្តរាយភូមិ	2	23	Yes

#### 13.9.2 Political Parties active in the Municipality, District and Khan

Name	Abbr.	Office in District
Cambodian People Party	CPP	Yes
FUNCINPEC Party	FUNCINPEC	Yes
Human Rights Party	HRP	Yes
NRP	NRP	Yes
SAM RAINSY Party	Sam Rainsy Party	Yes

<sup>4</sup> Please note that the data in this table are at best estimates. If the table appears blank it does not mean there is no revenue, just that the data have not been recorded/entered.

### 13.10 Private Sector Organizations

#### 13.10.1 Registered Companies in 2008, by District

On private sector at commune and/or district level	OMC	Anlong Veng	Banteay Ampil	Chongkal	Samrong	Trapeang Prssath
<b>Businesses and Companies</b>						
Number of registered agricultural enterprises (except family farms)	7	1	0	1	4	1
Number of registered shops, restaurants, transporters and other services	28	14	0	0	14	0
Number of manufacturing companies	35	10	0	0	23	2
Number of registered forestry enterprises	11	2	2	2	3	2
Number of registered mining companies	6	1	1	2	0	2
Number of financial institutions (ACELEDA, Thanakea Phum, AMK)	3	0	0	0	3	0
Number of other commercial institutions	-	n/a	n/a	n/a	n/a	n/a
Estimated number of informal enterprises (not registered)	8	3	n/a	n/a	5	n/a
<b>Employment</b>						
Number of people employed in 2008 by companies or any other enterprises	1,545	100	20	70	1,305	50
<b>Investment</b>						
Amount invested in 2008 by private sector	14,165,714	57,143	0	0	14,095,238	13,333
<b>Markets</b>						
Number of markets, operating at least weekly	7	2	1	1	2	1

**Note:** These data are not comprehensive as different companies and business are registered with different departments and not all departments were able or willing to provide detailed information. The number of informal enterprises reflects a rough estimate, made at provincial level and could not be verified.

**Source:** Unofficially collected at Provincial Level

#### 13.10.2 Farmers in 2008, by District

Credit	OMC	Anlong Veng	Banteay Ampil	Chongkal	Samrong	Trapeang Prssath
Volume of credit provided to farmers in 2008	4,000	1,000	1,000	n/a	n/a	2,000
Number of farmers receiving credit in 2008	587	80	205	n/a	n/a	302
Volume of credit provided to companies in 2008	N/A	n/a	n/a	n/a	n/a	n/a

**Note:** Please note that these data are not necessarily complete or correct. The data are derived from government agencies at provincial and district level which used different recording systems, did not always have complete data or were, sometimes, less than willing to share their data.

**Source:** Unofficially collected at Provincial Level

## **SECTION E: POVERTY DATA**



## 14 Data on Poverty

### 14.1 Predicted Poverty Rates for 2009, by commune

The **Predicted Family Poverty Rate** is based on a statistical model (robust multilevel mixed effect regression) at village level developed by the NCDD M&E Unit and uses CDB data for making an estimate of the predicted poverty rate (this is: *the portion of total families in the district or commune who are expected to be poor*) for the following year using current year data.

The basis for this predicted poverty rate also uses IDPoor (a project of the Ministry of Planning with technical assistance provided by GTZ) data

Commune	2004	2009
Anlong Veang	45.80%	33.80%
Lumtong	41.40%	.%
Trapeang Tav	49.10%	38.90%
Trapeang Prei	41.70%	29.80%
Thlat	44.90%	34.20%

### 14.2 Poverty data from survey

#### 14.2.1 Identification of Poor Households Program (IDPoor)

The Ministry of Planning IDPoor Program has developed standardized Procedures for Identification of Poor Households in rural areas. These Procedures are implemented using a participatory and consultative process by sub-national government structures and community representatives.

The IDPoor Program is managed by the Ministry of Planning (MOP), in cooperation with the Ministry of Interior's Department of Local Administration (DOLA). The program is supported by the Federal Republic of Germany, with technical assistance provided by German Technical Cooperation (GTZ). In 2009, AusAID also provided funding support to the Program.

#### Objective

The IDPoor Program aims to implement the Procedures for Identification of Poor Households in rural areas as widely as possible, in order to provide data on the level of poverty of areas and households that can be used by a large range of institutions and organizations for targeting services and development assistance to poor areas and poor households.

**Coverage:** During 2007, 2008 and 2009 the IDPoor Procedures have been implemented in 18 provinces (with partial or complete coverage), covering a total of around 7000 rural villages. The MOP and a number of NGO partners who are Health Equity Fund Operators have collaborated in collecting this data from different areas.

**Categorization:** Identified poor households are classified under two poverty categories: Poor Level 1 (very poor), and Poor Level 2 (poor). Households are classified based on data collected using a standard questionnaire, together with consideration by villagers of these households' special circumstances.

**Further information:** Please go to the IDPoor Program webpage at [www.mop.gov.kh/Projects/IDPoor/tabid/154/Default.aspx](http://www.mop.gov.kh/Projects/IDPoor/tabid/154/Default.aspx)

Commune	Poor 1 HHs	Poor 2 HHs	Poor 1 HHs	Poor 2 HHs	Total Poor 1&2 HHs	Total HHs in Commune
Anlong Veaeng	218	156	10.5%	7.5%	18.1%	2072
Trapeang Tav	149	230	10.0%	15.4%	25.4%	1491
Trapeang Prei	213	199	12.6%	11.7%	24.3%	1694
Thlat	101	71	15.8%	11.1%	27.0%	638
Lumtong	200	181	15.9%	14.4%	30.4%	1254